

TITUSVILLE, FLORIDA

TACAN RWY 33

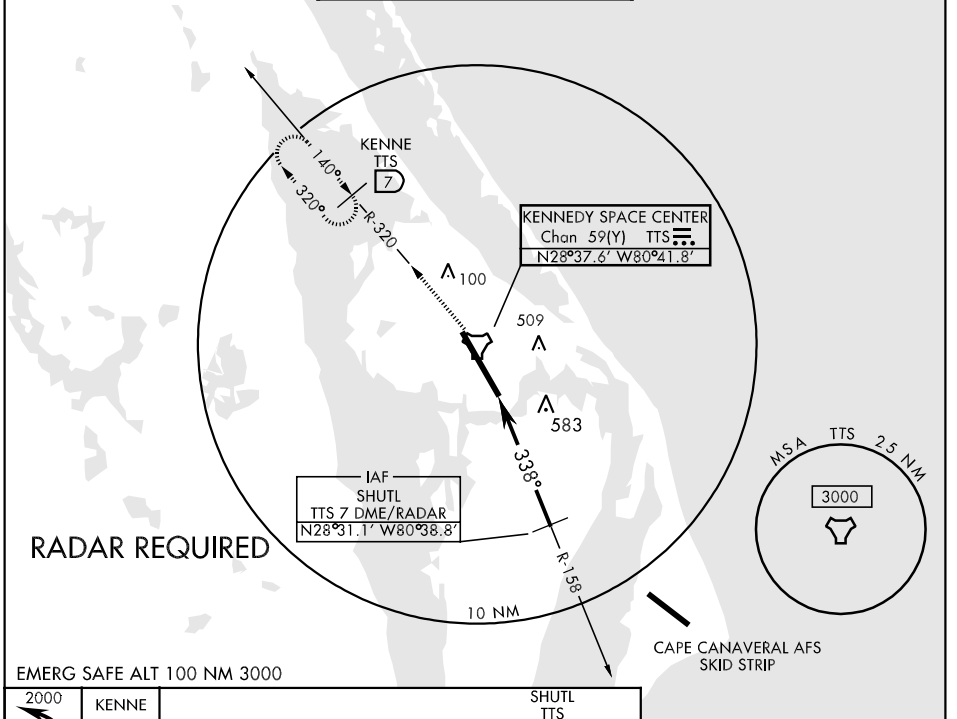
TACAN TTS Chan 59(Y)	APCH CRS 338°	Rwy Idg 15,000 TDZE 10 Arpt Elev 10
-----------------------------	----------------------	--

AL-8000 [USAF]

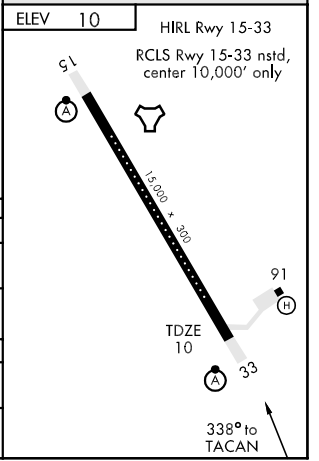
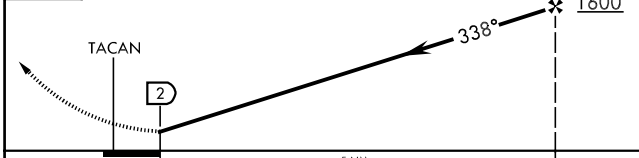
TITUSVILLE/NASA SHUTTLE LANDING FACILITY (KTTS)

<p>NA PRIORITY PERMISSION REQUIRED</p> <p>When control tower clsd, use Melbourne Intl altimeter setting.</p> <p>* When ALS inop, increase CAT E vis ½ mile.</p>	<p>ALS-2</p>	<p>MISSED APPROACH: Climb to 2000 via TTS R-320 to KENNE 7 DME and hold.</p>
--	--------------	--

<p>ORLANDO APP CON</p> <p>134.95 239.275</p>	<p>NASA TOWER ★</p> <p>128.55 284.0</p>	<p>GND CON</p> <p>121.75</p>
---	--	-------------------------------------



2000 TTS R-320	KENNE TTS 7	SHUTL TTS 7/RADAR
		ELEV 10



CATEGORY	A	B	C	D	E
S-33 *	600-½ 590 (600-½)	600-1 590(600-1)	600-1¼ 590(600-1)	600-1½ 590(600-1¼)	600-1½ 590(600-1½)
CIRCLING	600-1 590 (600-1)	600-1½ 590(600-1½)	900-3 890 (900-3)		
MELBOURNE INTL ALTIMETER SETTING MINIMUMS					
S-33 *	680-½ 670 (700-½)	680-1¼ 670(700-1¼)	680-1½ 670(700-1½)	680-1¾ 670(700-1¾)	
CIRCLING	680-1 670 (700-1)	680-1¾ 670(700-1¾)	960-3 950 (1000-3)		

TITUSVILLE, FLORIDA 28°37'N-80°42'W TITUSVILLE/NASA SHUTTLE LANDING FACILITY (KTTS)

Amtd 2 07354

TACAN RWY 33

SE-3, 22 OCT 2009 to 19 NOV 2009

SE-3, 22 OCT 2009 to 19 NOV 2009