

TITUSVILLE, FLORIDA

HI-GPS RWY 33

APCH CRS	Rwy ldg	15,000
349°	TDZE	10
	Arpt Elev	10

AL-8000 [USAF]

TITUSVILLE/NASA SHUTTLE LANDING FACILITY (KTTS)

NA PRIORITY PERMISSION REQUIRED
 When control tower clsd , use Melbourne Intl altimeter setting.
 **When ALS inop, increase CAT DE vis to 1/4 mile.
 **When ALS inop, increase CAT DE vis to 1/2 mile.

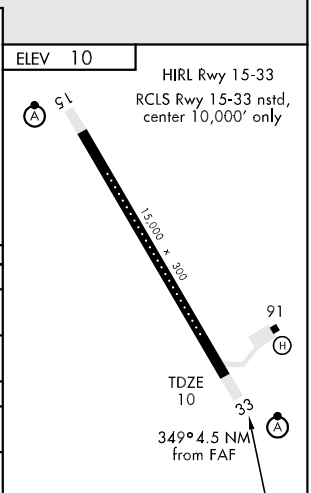
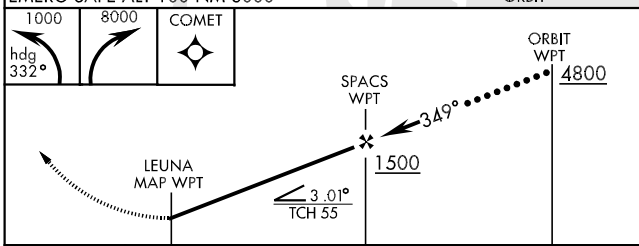
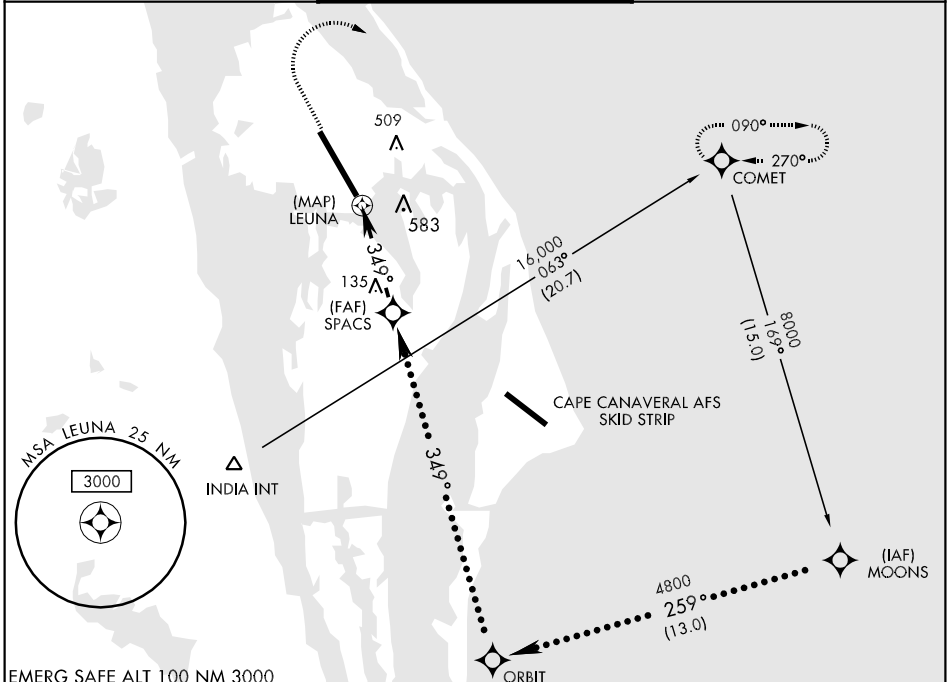


MISSED APPROACH: Climbing left turn to 1000 via heading 332° then climbing right turn to 8000 direct COMET and hold.

ORLANDO APP CON
134.95 239.275

NASA TOWER*
128.55 284.0

GND CON
121.75



CATEGORY	C	D	E
S-33 *	400-1/2 390(400-1/2)	400-1	390 (400-1)
CIRCLING	460-1/2 450(400-1/2)	900-3	890 (900-3)
MELBOURNE INTL ALTIMETER SETTING MINIMUMS			
S-33 **	460-3/4 450 (500-3/4)	460-1	450 (500-1)
CIRCLING	500-1/2 490 (500-1/2)	960-3	950 (1000-3)

TITUSVILLE, FLORIDA

28°37'N-80°42'W

TITUSVILLE/NASA SHUTTLE LANDING FACILITY (KTTS)

Amtd 2 07354

HI-GPS RWY 33

SE-3, 22 OCT 2009 to 19 NOV 2009

SE-3, 22 OCT 2009 to 19 NOV 2009