

APCH CRS	Rwy Idg	<b>15,000</b>
<b>155°</b>	TDZE	<b>10</b>
	Arprt Elev	<b>10</b>

AL-8000 [USAF]

TITUSVILLE/NASA SHUTTLE LANDING FACILITY (KTTS)

**NA** PRIOR PERMISSION REQUIRED

When control tower clsd , use Melbourne Intl altimeter setting.  
 \* When ALS inop, increase CAT DE vis to 1 1/4 mile.  
 \*\* When ALS inop, increase CAT DE vis to 1 1/2 mile.

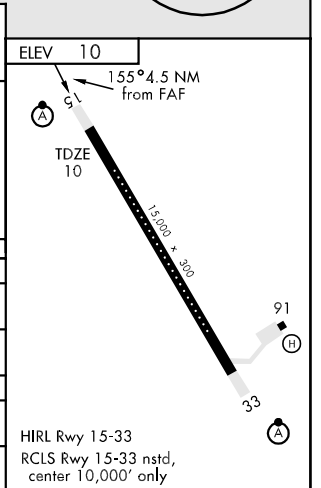
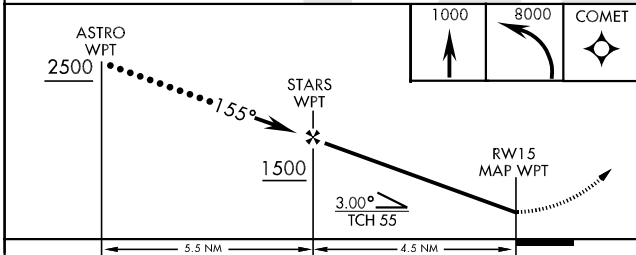
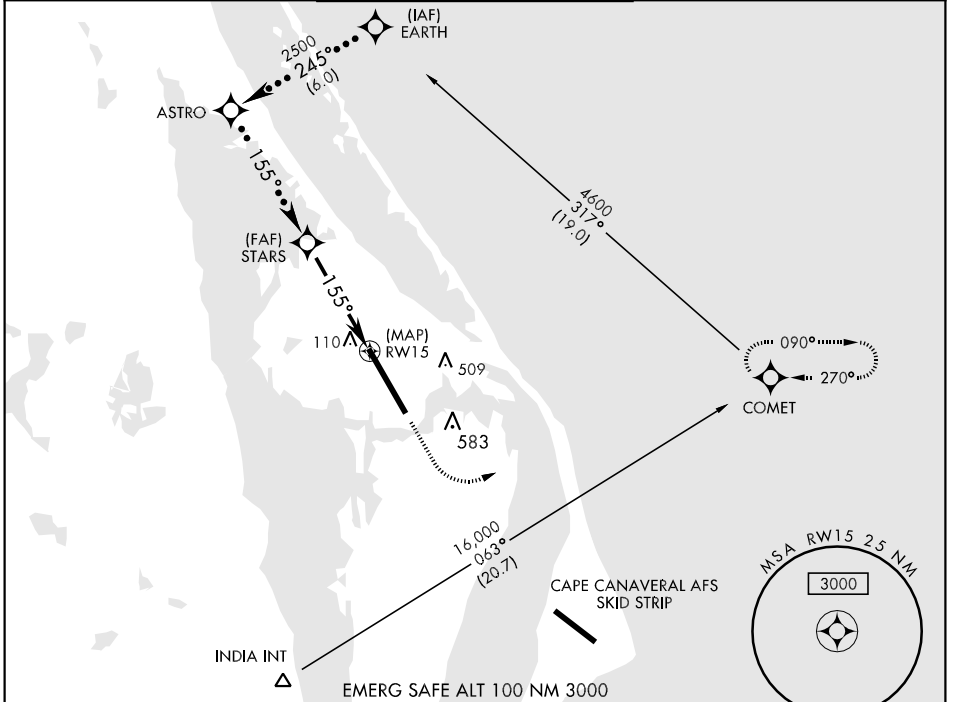


MISSED APPROACH: Climb to 1000 then climbing left turn to 8000 direct COMET and hold.

ORLANDO APP CON  
**134.95 239.275**

NASA TOWER ★  
**128.55 284.0**

GND CON  
**121.75**



CATEGORY	C		D	E
	S-15 *	360-1/2 350(400-1 1/2)	360-1	350
CIRCLING	460-1 1/2 450(400-1 1/2)	900-3	890	(900-3)
MELBOURNE INTL ALTIMETER SETTING MINIMUMS				
S-15 **	440-3/4 430 (500-3/4)	440-1	430	(500-1)
CIRCLING	500-1 1/2 490 (500-1 1/2)	960-3	950	(1000-3)

SE-3, 22 OCT 2009 to 19 NOV 2009

SE-3, 22 OCT 2009 to 19 NOV 2009