

APCH CRS	Rwy Idg	<b>15,000</b>
<b>155°</b>	TDZE	<b>10</b>
	Arprt Elev	<b>10</b>

AL-8000 [USAF]

TITUSVILLE/NASA SHUTTLE LANDING FACILITY (KTTS)

**NA** PRIORITY PERMISSION REQUIRED

When control tower clsd, use Melbourne Intl altimeter setting.  
 \* When ALS inop, increase CAT DE vis to 1 1/4 mile.  
 \*\* When ALS inop, increase CAT DE vis to 1 1/2 mile.

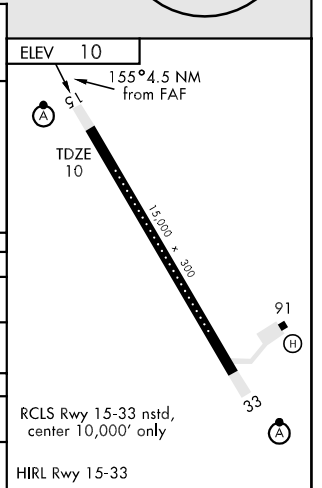
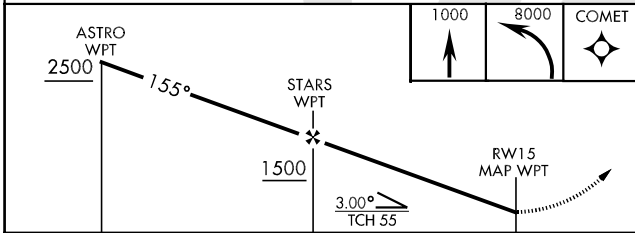
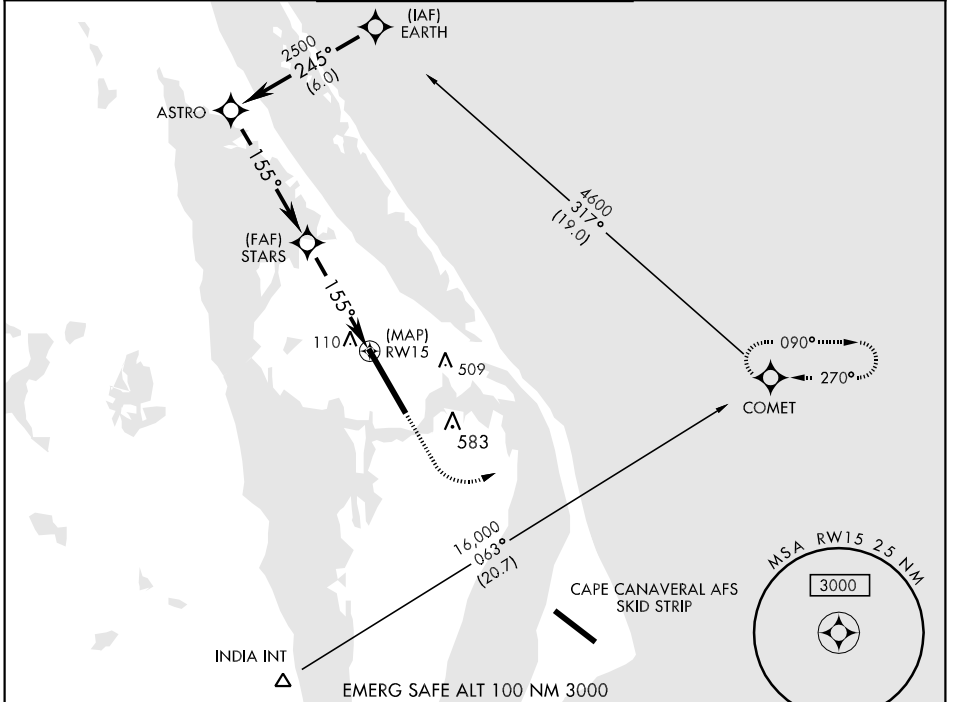


MISSED APPROACH: Climb to 1000 then climbing left turn to 8000 direct COMET and hold.

ORLANDO APP CON  
**134.95 239.275**

NASA TOWER ★  
**128.55 284.0**

GND CON  
**121.75**



CATEGORY	A	B	C	D	E
S-15 *	360-1/2	350	(400-1/2)	360-1	350 (400-1)
CIRCLING	420-1 410(500-1)	460-1 450(500-1)	460-1 1/2 450(500-1 1/2)	900-3	890 (900-3)
MELBOURNE INTL ALTIMETER SETTING MINIMUMS					
S-15 **	440-1/2	430 (500-1/2)	440-3/4 430(500-3/4)	440-1	430 (500-1)
CIRCLING	500-1	490 (500-1)	500-1 1/2 490(500-1 1/2)	960-3	950 (1000-3)

SE-3, 22 OCT 2009 to 19 NOV 2009

SE-3, 22 OCT 2009 to 19 NOV 2009