

RNAV (GPS) RWY 6

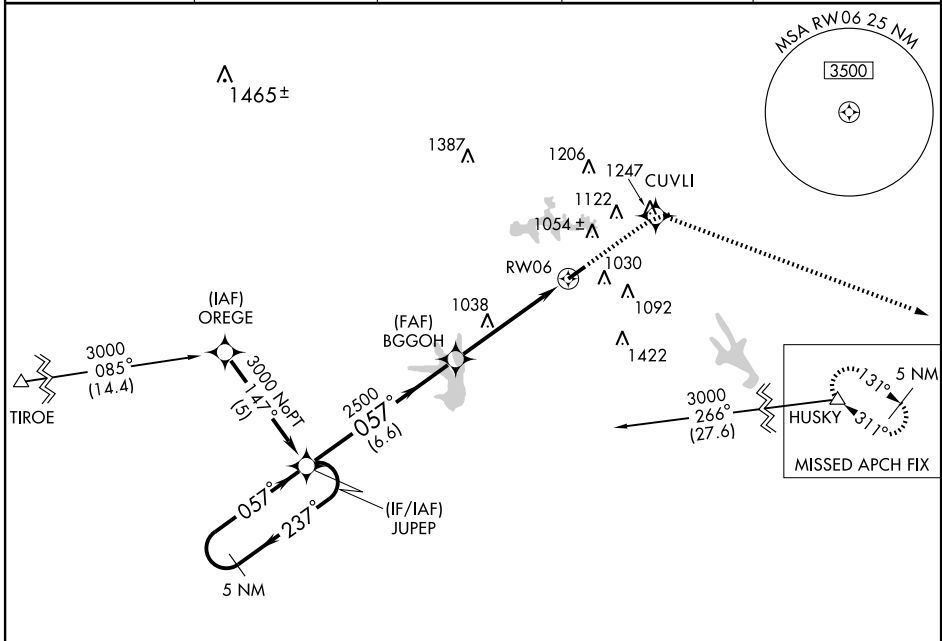
HAMPTON/CLAYTON COUNTY-TARA FIELD (4A7)

APP CRS 057°	Rwy Idg 4503
	TDZE 861
	Apt Elev 874

NA DME/DME RNP-0.3 NA. Visibility reduction by helicopters NA. Straight-in minimums NA at night. If local altimeter setting not received, use Hartsfield-Jackson Atlanta Intl altimeter setting and increase all MDAs 60 feet.

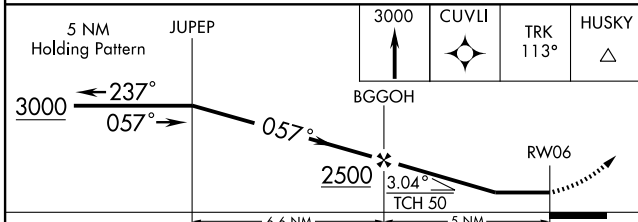
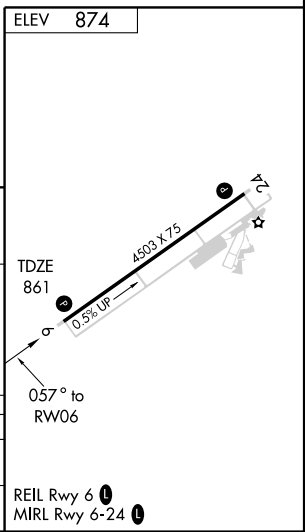
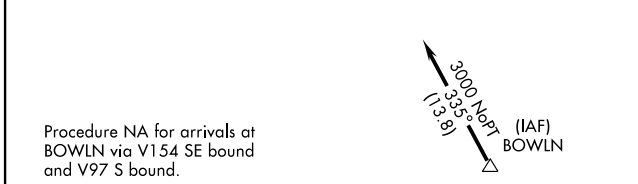
MISSED APPROACH: Climb to 3000 direct CUVLI and via 113° Track to HUSKY and hold.

AWOS-3 124.825	ATLANTA APP CON 128.575	CLNC DEL 128.575 381.65	GCO 121.725	UNICOM 122.725 (CTAF)
--------------------------	-----------------------------------	-----------------------------------	-----------------------	---------------------------------



SE-4, 22 OCT 2009 to 19 NOV 2009

SE-4, 22 OCT 2009 to 19 NOV 2009



CATEGORY	A	B	C	D
LNVA MDA	1300-1	439 (500-1)	1300-1¼ 439 (500-1¼)	1300-1½ 439 (500-1½)
CIRCLING	1360-1	486 (500-1)	1360-1½ 486 (500-1½)	1480-2 606 (700-2)

RNAV (GPS) RWY 6