

# RNAV (GPS) RWY 5

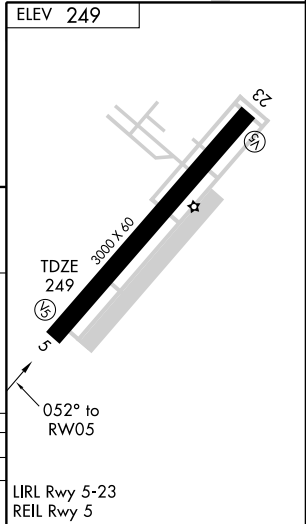
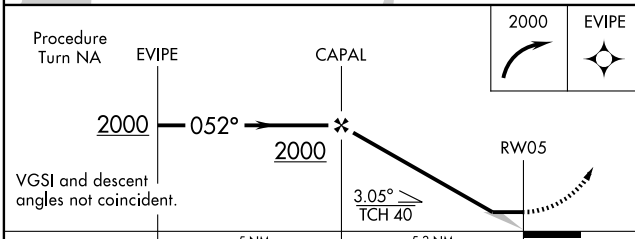
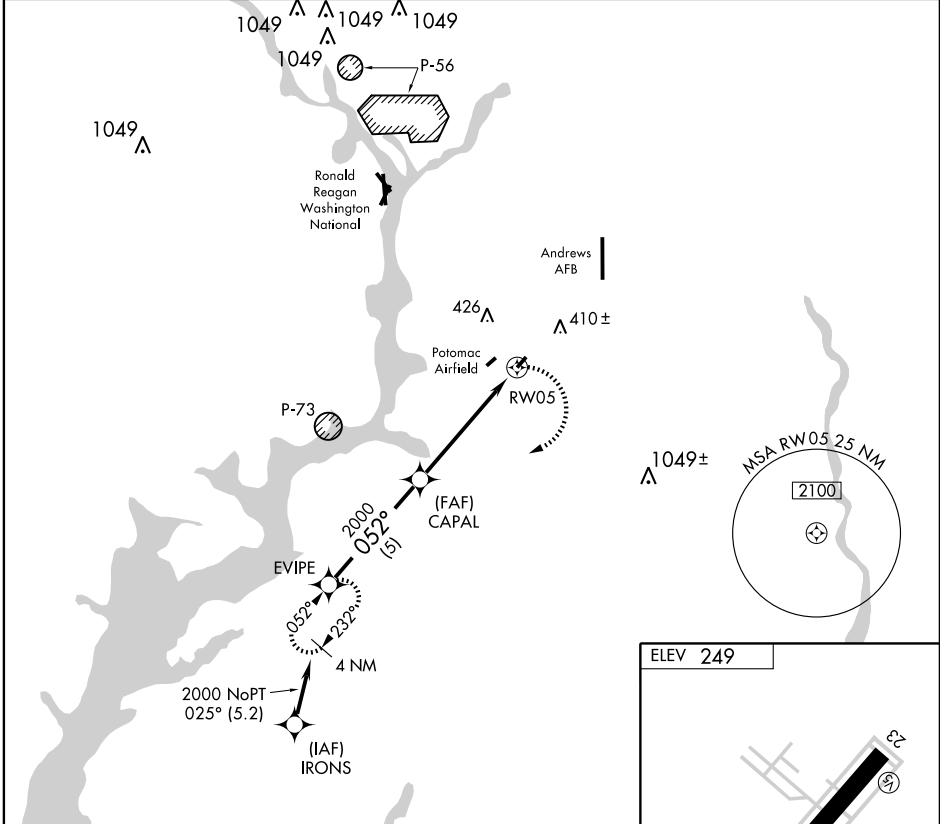
CLINTON/ WASHINGTON EXECUTIVE/HYDE FIELD (W32)

APP CRS	Rwy Idg	<b>3000</b>
<b>052°</b>	TDZE	<b>249</b>
	Apt Elev	<b>249</b>

**▼** Use Andrews AFB altimeter setting.  
**▲ NA** Circling NW Rwy 5-23 NA.  
 GPS or RNP-0.3 Required. DME/DME RNP-0.3 NA.

**MISSED APPROACH:** Climbing right turn to 2000 direct EVIPE WP and hold.

ANDREWS ATIS <b>113.1</b>	POTOMAC APP CON <b>124.7 338.2</b>	UNICOM <b>122.8 (CTAF)</b>
------------------------------	---------------------------------------	-------------------------------



CATEGORY	A	B	C	D
LNAV MDA	660-1	411 (500-1)	NA	
CIRCLING	660-1 411 (500-1)	700-1 451 (500-1)	NA	

# RNAV (GPS) RWY 5

NE-3, 22 OCT 2009 to 19 NOV 2009

NE-3, 22 OCT 2009 to 19 NOV 2009