

RNAV (GPS) RWY 3

PRESTONSBURG/ BIG SANDY RGNL (K22)

| | |
|------------------------|-------------------------|
| APP CRS 036° | Rwy Idg 5000 |
| | TDZE 1210 |
| | Apt Elev 1221 |

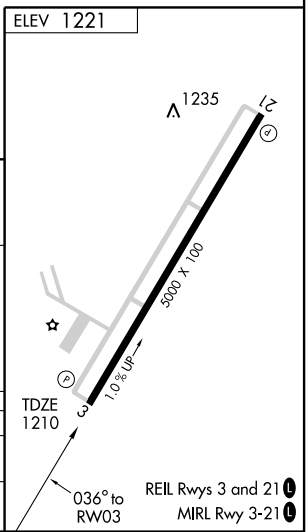
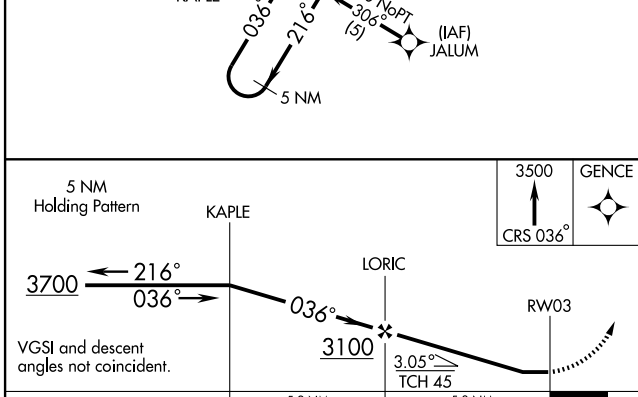
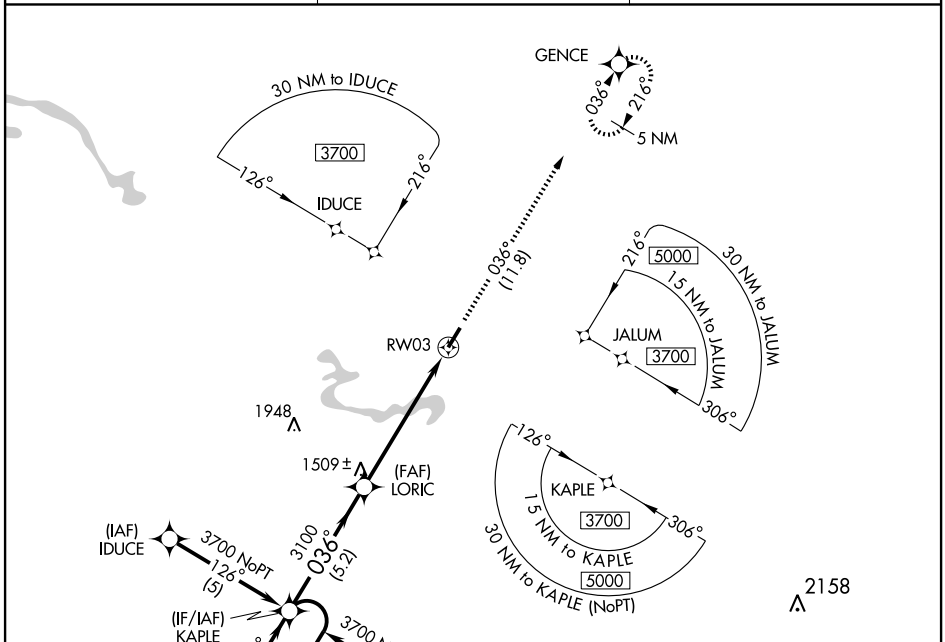
GPS or RNP-0.3 Required.
DME/DME RNP-0.3 NA.

MISSED APPROACH: Climb to 3500 via 036° course to GENCE WP and hold.

AWOS-3
120.175

HUNTINGTON APP CON
119.75 270.1

UNICOM
123.05 (CTAF) 0



| CATEGORY | A | B | C | D |
|----------|--------|-------------|-------------------------|-------------------------|
| LNVA MDA | 1680-1 | 470 (500-1) | 1680-1¼ 470 (500-1¼) | 1680-1½ 470 (500-1½) |
| CIRCLING | 1840-1 | 619 (700-1) | 1840-1¾ 619 (700-1¾) | 1840-2 619 (700-2) |

SE-1, 22 OCT 2009 to 19 NOV 2009

SE-1, 22 OCT 2009 to 19 NOV 2009