

# RNAV (GPS) RWY 21

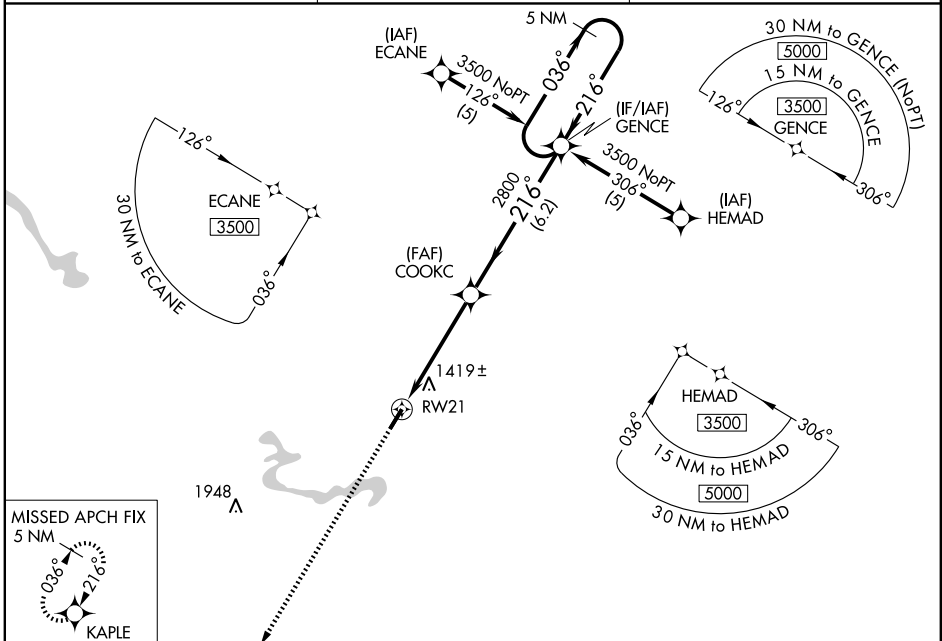
PRESTONSBURG/BIG SANDY RGNL (K22)

WAAS CH <b>77801</b> <b>W21A</b>	APP CRS <b>216°</b>	Rwy Idg TDZE <b>1221</b> Apt Elev <b>1221</b>	<b>5000</b>
--	------------------------	---	-------------

**▼** For uncompensated Baro-VNAV systems, LNAV/VNAV NA below -17°C (2°F) or above 46°C (115°F).  
**▲** DME/DME RNP-0.3 NA. If local altimeter setting not received, use Pikeville altimeter setting and increase LPV DA to 1534 feet; LNAV/VNAV DA to 1802 feet and all MDAs 80 feet.  
 Baro-VNAV and VDP NA when using Pikeville altimeter setting.

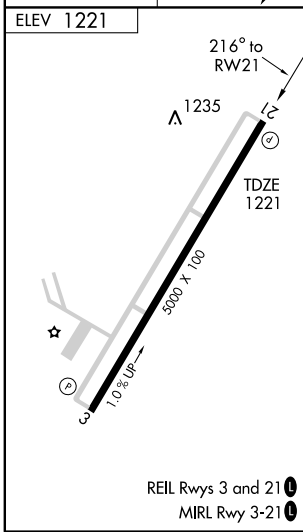
**MISSED APPROACH:**  
Climb to 3700 direct KAPLE and hold.

AWOS-3 <b>120.175</b>	HUNTINGTON APP CON <b>119.75 270.1</b>	UNICOM <b>123.05 (CTAF) 0</b>
--------------------------	---	----------------------------------



SE-1, 22 OCT 2009 to 19 NOV 2009

SE-1, 22 OCT 2009 to 19 NOV 2009



3700 KAPLE VGSI and RNAV glidepath not coincident.		5 NM Holding Pattern	
*LNAV Only.		COOKC	
*1.4 NM to RWY 21		GENCE	
RWY 21		3500	
1.4		3.4 NM	
2800		6.2 NM	
216°		036°	
216°		3500	
GS 3.00°		TCH 40	
CATEGORY	A	B	C
LPV DA	1471-1 250 (300-1)		
LNAV/VNAV DA	1739-1¾ 518 (600-1¾)		
LNAV MDA	1680-1	459 (500-1)	1680-1½ 459 (500-1½)
CIRCLING	1840-1	619 (700-1)	1840-2 619 (700-2)