

RNAV (GPS) RWY 11

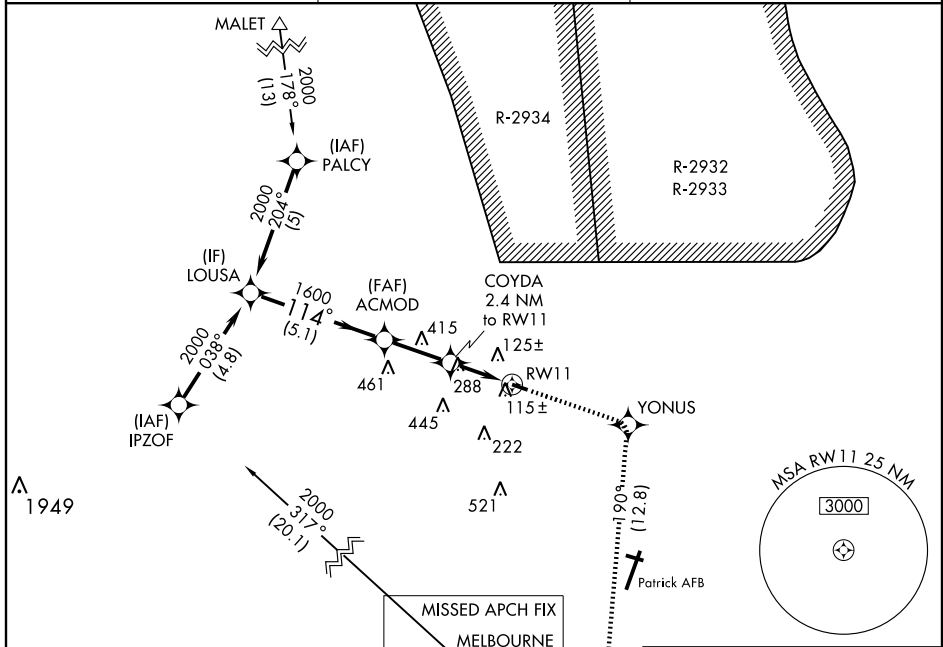
MERRITT ISLAND (COI)

WAAS CH 65899 W11A	APP CRS 114°	Rwy Idg 3601 TDZE 6 Apt Elev 6
----------------------------------------	------------------------	-----------------------------------------------------------

⚠ If local altimeter setting not received, use Melbourne altimeter setting and increase LPV DA to 329 and all MDAs 40 feet.
⚠ DME/DME RNP-0.3 NA.

MISSED APPROACH: Climb to 3000 direct YONUS and via 190° track to MLB VOR/DME and hold.

AWOS-3 119.025	ORLANDO APP CON 134.95 281.425	UNICOM 122.975 (CTAF) 0
--------------------------	------------------------------------------	------------------------------------------



Procedure NA for arrivals at MLB VOR/DME on airway radials 271 CW 324.

Procedure Turn NA	LOUSA	3000	YONUS	190° TRK	MLB
GS 3.00° TCH 33	2000	ACMOD	COYDA 2.4 NM to RWY11	RWY11	TDZE 6
	114°	1600	800	114° to RWY11	3601 X 75
	5.1 NM	2.4 NM	2.4 NM		
CATEGORY	A	B	C	D	
LPV DA	291-1	285 (300-1)		NA	
LNAV/VNAV DA		NA			
LNAV MDA	600-1	594 (600-1)		NA	
CIRCLING	600-1	620-1		NA	
	594 (600-1)	614 (700-1)			

MIRL Rwy 11-29 **0**

SE-3, 22 OCT 2009 to 19 NOV 2009

SE-3, 22 OCT 2009 to 19 NOV 2009