

JOHNSTOWN, NEW YORK

AL-6987 (FAA)

# NDB RWY 10

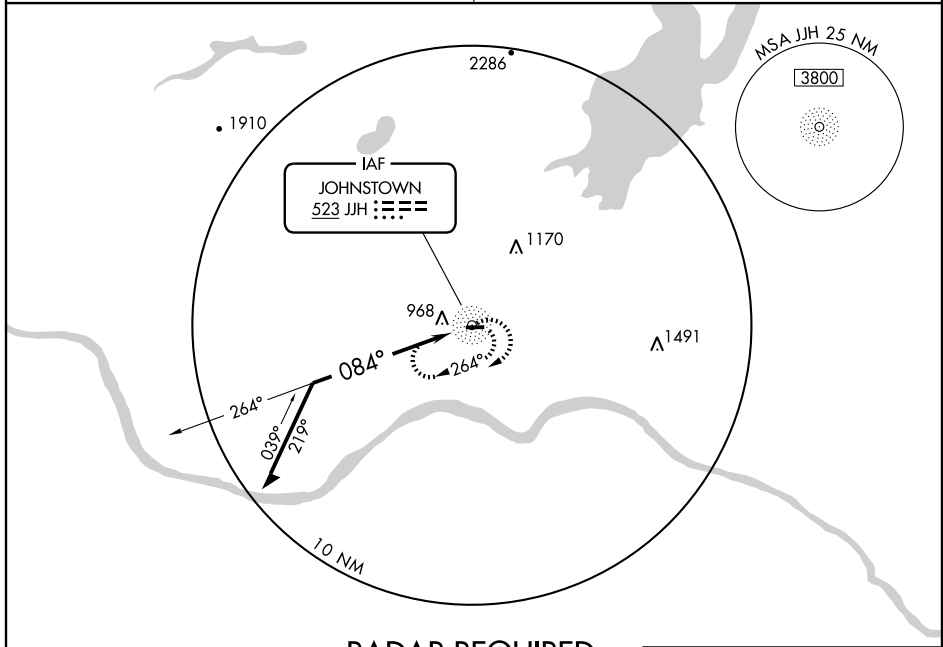
JOHNSTOWN/ FULTON COUNTY (NY)

NDB JJK <b>523</b>	APP CRS <b>084°</b>	Rwy Idg <b>4000</b>
		TDZE <b>881</b>
		Apt Elev <b>881</b>

**▽** Use Schenectady County altimeter setting; **▲** NA when not received, use Albany Intl altimeter setting.

MISSED APPROACH: Climbing right turn to 3000 in JJK NDB holding pattern.

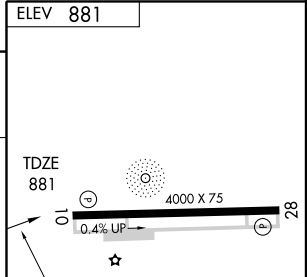
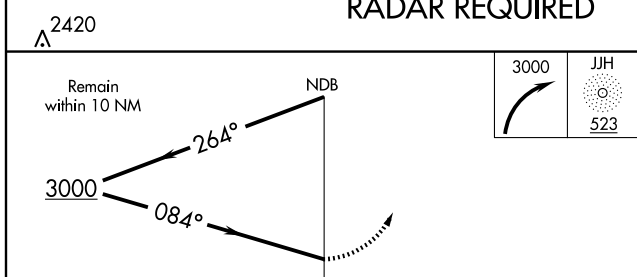
ALBANY APP CON **118.05** UNICOM **122.7 (CTAF)**



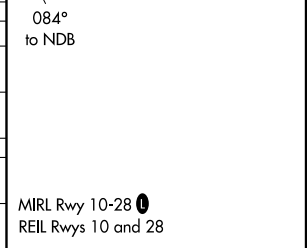
NE-2, 22 OCT 2009 to 19 NOV 2009

NE-2, 22 OCT 2009 to 19 NOV 2009

## RADAR REQUIRED



CATEGORY	A	B	C	D
S-10	1900-1¼ 1019 (1100-1¼)	1900-1½ 1019 (1100-1½)		NA
CIRCLING	1900-1¼ 1019 (1100-1¼)	1900-1½ 1019 (1100-1½)		NA
ALBANY INTL ALTIMETER SETTING MINIMUMS				
S-10	1940-1¼ 1059 (1100-1¼)	1940-1½ 1059 (1100-1½)		NA
CIRCLING	1940-1¼ 1059 (1100-1¼)	1940-1½ 1059 (1100-1½)		NA



JOHNSTOWN, NEW YORK  
Amdt 1A 08241

43°00'N - 74°20'W

JOHNSTOWN/ FULTON COUNTY (NY)

# NDB RWY 10