

JOHNSTOWN, NEW YORK

AL-6987 (FAA)

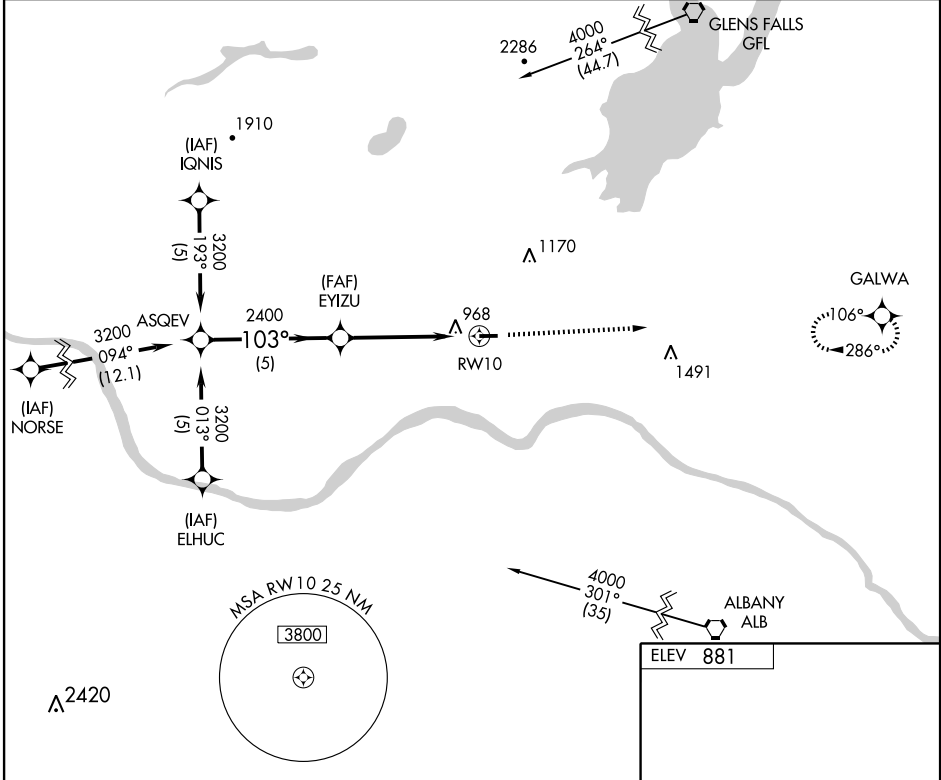
GPS RWY 10

JOHNSTOWN/ FULTON COUNTY (NY)

| | | |
|-------------|----------|-------------|
| APP CRS | Rwy Idg | 4000 |
| 103° | TDZE | 881 |
| | Apt Elev | 881 |

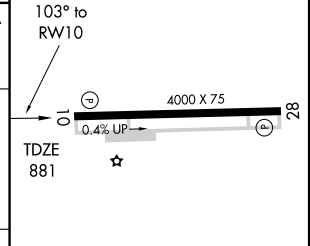
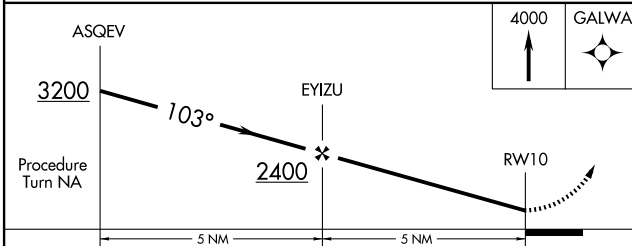
▼ Use Schenectady County altimeter setting; when not received, use Albany Intl altimeter setting.
▲ NA MISSED APPROACH: Climb to 4000 direct GALWA WP and hold.

ALBANY APP CON **118.05** UNICOM **122.7** (CTAF)



NE-2, 22 OCT 2009 to 19 NOV 2009

NE-2, 22 OCT 2009 to 19 NOV 2009



| CATEGORY | A | B | C | D |
|--|--------|-------------|---|----|
| S-10 | 1440-1 | 559 (600-1) | | NA |
| CIRCLING | 1440-1 | 559 (600-1) | | NA |
| ALBANY INTL ALTIMETER SETTING MINIMUMS | | | | |
| S-10 | 1480-1 | 599 (600-1) | | NA |
| CIRCLING | 1480-1 | 599 (600-1) | | NA |

MIRL Rwy 10-28
 REIL Rwy 10 and 28

JOHNSTOWN, NEW YORK
 Orig 08045

43°00'N - 74°20'W

JOHNSTOWN/ FULTON COUNTY (NY)

GPS RWY 10