

# RNAV (GPS) RWY 28

HARBOR SPRINGS (MGN)

APP CRS <b>281°</b>	Rwy Idg TDZE Apt Elev	<b>3712</b> <b>686</b> <b>686</b>
------------------------	-----------------------------	---

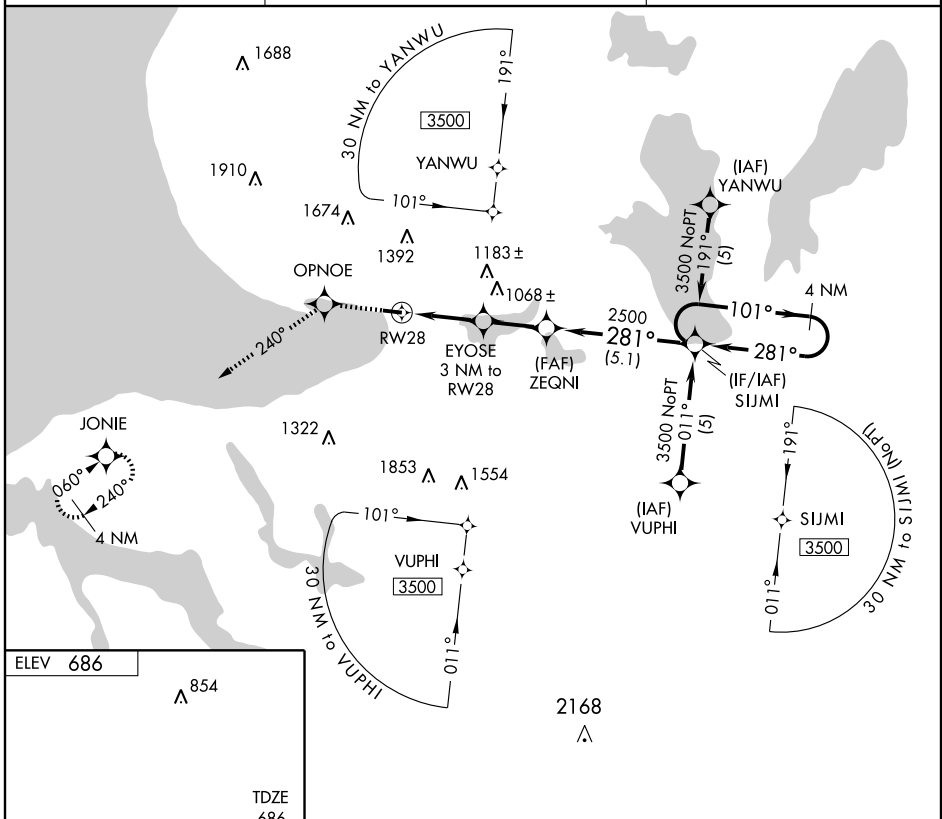
**▼** DME/DME RNP -0.3 NA. Visibility reduction by helicopters NA.  
**▲** When local altimeter setting not received, use Pellston altimeter setting and increase all MDAs 40 feet.

**MISSED APPROACH:** Climb to 3400 direct OPNOE and via 240° track to JONIE and hold.

AWOS-3  
**119.925**

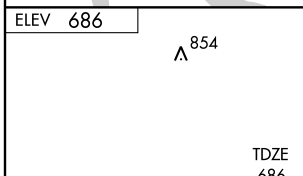
MINNEAPOLIS CENTER  
**134.6 354.05**

UNICOM  
**122.8 (CTAF) 0**



EC-1, 22 OCT 2009 to 19 NOV 2009

EC-1, 22 OCT 2009 to 19 NOV 2009



3400	OPNOE	JONIE	ZEIQNI	SIJMI	4 NM Holding Pattern
↑	TRK 224°				
	RWY 28	EYOSE 3 NM to RWY 28	2500	3500	101° → ← 281°
		1680	≤ 3.05° TCH 35		VGSI and descent angles not coincident
		3 NM	2.5 NM	5.1 NM	
CATEGORY	A	B	C	D	
LNVA MDA	1120-1	434 (500-1)		NA	
CIRCLING	1380-1 694 (700-1)	1500-1¼ 814 (900-1¼)		NA	

MIRL Rwy 10-28 0