

VOR/DME FAY	APP CRS	Rwy Idg	4998
108.8	152°	TDZE	133
Chan 25		Apt Elev	133

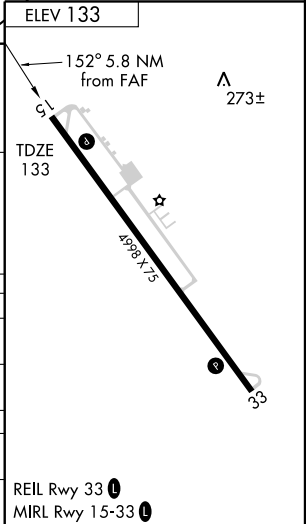
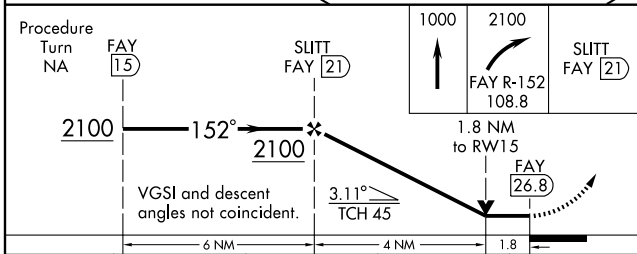
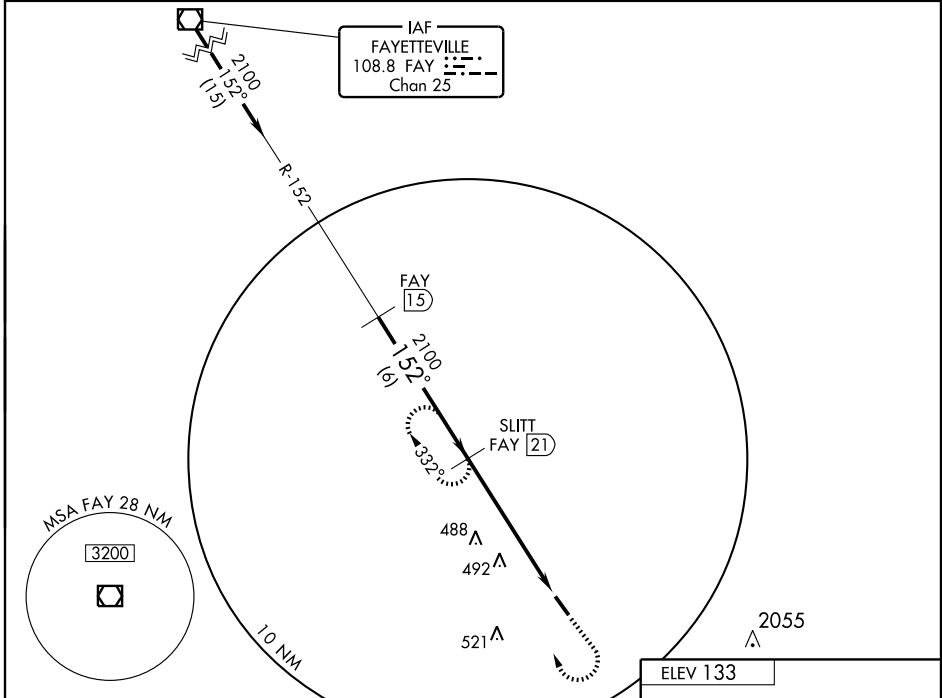
VOR/DME RWY 15

ELIZABETHTOWN/CURTIS L BROWN JR FIELD (EYF)

Obtain local altimeter setting on CTAF; when not received, use Fayetteville altimeter setting. VDP and descent angle/gradient not authorized with Fayetteville altimeter setting.

MISSED APPROACH: Climb to 1000 then climbing right turn to 2100 via **FAY R-152** to **SLITT 21 DME** and hold.

AWOS-3 119.475	FAYETTEVILLE APP CON 133.0 295.0	UNICOM 122.8 (CTAF)
--------------------------	--	-------------------------------



CATEGORY	A	B	C	D
S-15	760-1 627 (700-1)	760-1¼ 627 (700-1¼)	760-1¾ 627 (700-1¾)	760-2 627 (700-2)
CIRCLING	760-1 627 (700-1)	760-1¼ 627 (700-1¼)	760-1¾ 627 (700-1¾)	800-2 667 (700-2)
FAYETTEVILLE ALTIMETER SETTING MINIMUMS				
S-15	820-1 687 (700-1)	820-1¼ 687 (700-1¼)	820-2 687 (700-2)	820-2¼ 687 (700-2¼)
CIRCLING	820-1 687 (700-1)	820-1¼ 687 (700-1¼)	820-2 687 (700-2)	880-2½ 747 (800-2½)

SE-2, 22 OCT 2009 to 19 NOV 2009

SE-2, 22 OCT 2009 to 19 NOV 2009