

# NDB RWY 33

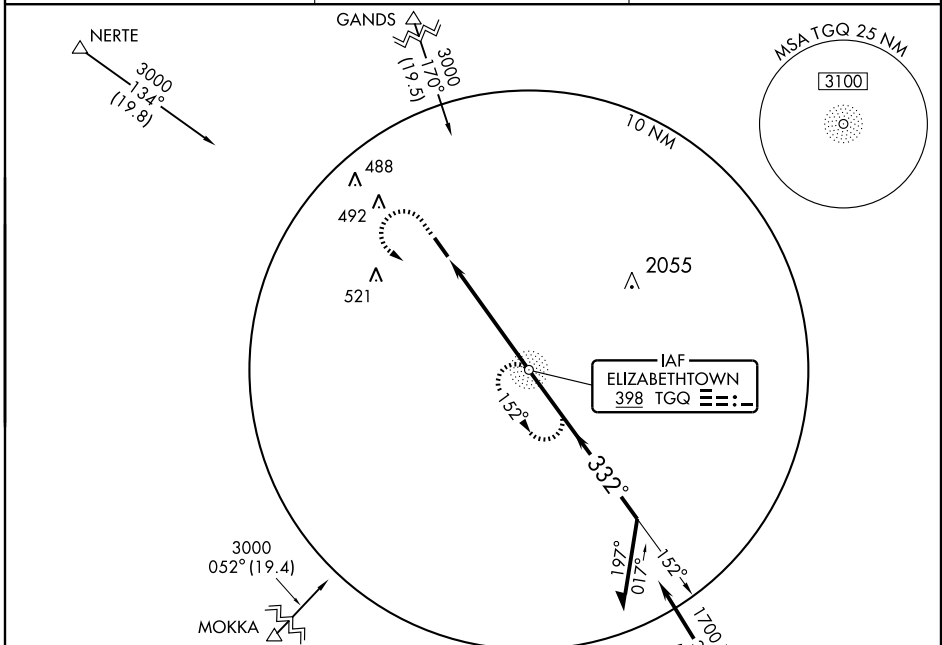
ELIZABETHTOWN/CURTIS L BROWN JR FIELD (EYF)

NDB TGQ	APP CRS	Rwy Idg	<b>4998</b>
<b>398</b>	<b>332°</b>	TDZE	<b>123</b>
		Apt Elev	<b>133</b>

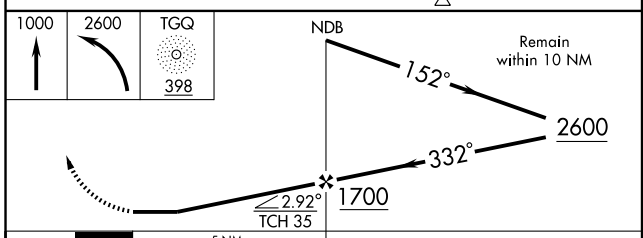
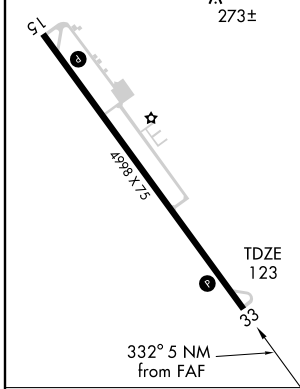
⚠ Obtain local altimeter setting on CTAF; when not received, use Fayetteville altimeter setting. Descent angle/gradient not authorized with Fayetteville altimeter setting.

MISSED APPROACH: Climb to 1000 then climbing left turn to 2600 direct TGQ NDB and hold.

AWOS-3 <b>119.475</b>	FAYETTEVILLE APP CON <b>133.0 295.0</b>	UNICOM <b>122.8 (CTAF)</b>
--------------------------	--	-------------------------------



ELEV 133	REIL Rwy 33 0
	MIRL Rwy 15-33 0
	273±



CATEGORY	A	B	C	D
S-33	540-1	417 (500-1)	540-1¼	417 (500-1¼)
CIRCLING	640-1	507 (600-1)	640-1½ 507 (600-1½)	800-2 667 (700-2)
FAYETTEVILLE ALTIMETER SETTING MINIMUMS				
S-33	620-1	497 (500-1)	620-1¼ 497 (500-1¼)	620-1½ 497 (500-1½)
CIRCLING	700-1	567 (600-1)	700-1½ 567 (600-1½)	880-2½ 747 (800-2½)

FAF to MAP 5 NM					
Knots	60	90	120	150	180
Min:Sec	5:00	3:20	2:30	2:00	1:40

# NDB RWY 33

SE-2, 22 OCT 2009 to 19 NOV 2009

SE-2, 22 OCT 2009 to 19 NOV 2009