

GPS RWY 33

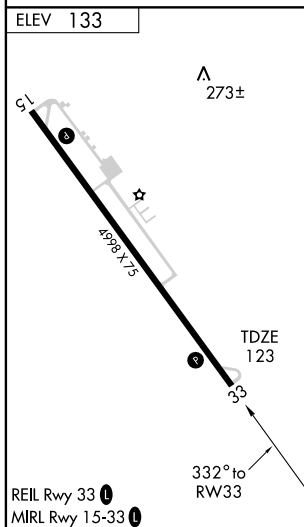
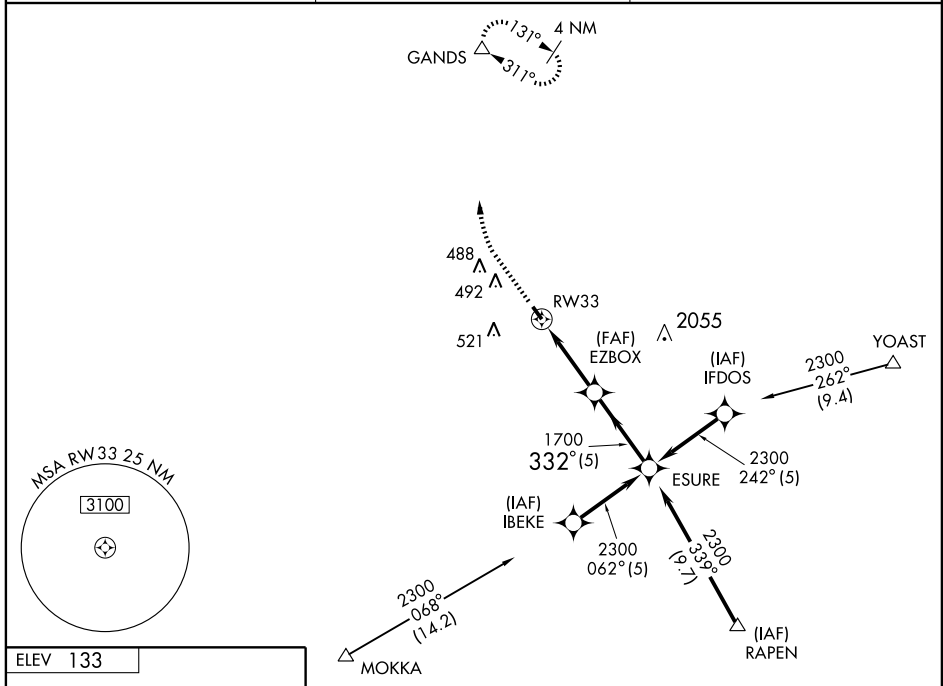
ELIZABETHTOWN/CURTIS L BROWN JR FIELD (EYF)

APP CRS	Rwy Idg	4998
332°	TDZE	123
	Apt Elev	133

▽ Obtain local altimeter setting on CTAF; when not received, use Fayetteville altimeter setting. VDP and descent angle/gradient not authorized with Fayetteville altimeter setting.

MISSED APPROACH: Climb to 1000 then climbing right turn to 3000 direct GANDS WP and hold.

AWOS-3 119.475	FAYETTEVILLE APP CON 133.0 295.0	UNICOM 122.8 (CTAF) 0
--------------------------	--	---------------------------------



	1000	3000	GANDS	
	↑	↷	△	
				Procedure Turn NA
CATEGORY	A	B	C	D
S-33	480-1 357 (400-1)			480-1¼ 357 (400-1¼)
CIRCLING	640-1	507 (600-1)	640-1½ 507 (600-1½)	800-2 667 (700-2)
FAYETTEVILLE ALTIMETER SETTING MINIMUMS				
S-33	560-1	437 (500-1)	560-1¼ 437 (500-1¼)	560-1½ 437 (500-1½)
CIRCLING	700-1	567 (600-1)	700-1½ 567 (600-1½)	880-2½ 747 (800-2½)

GPS RWY 33

SE-2, 22 OCT 2009 to 19 NOV 2009

SE-2, 22 OCT 2009 to 19 NOV 2009