

GPS RWY 15

ELIZABETHTOWN/ CURTIS L BROWN JR FIELD (EYF)

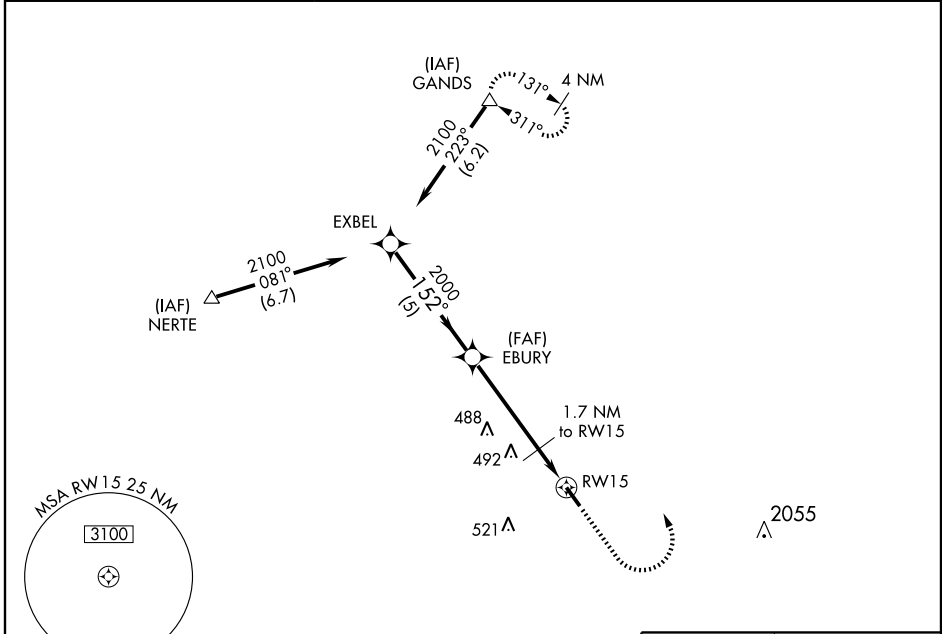
APP CRS	Rwy Idg	4998
152°	TDZE	133
	Apt Elev	133

▽ Obtain local altimeter setting on CTAF; when not received, use Fayetteville altimeter setting. VDP and descent angle/gradient not authorized with Fayetteville altimeter setting.

△ NA

MISSED APPROACH: Climb to 900 then climbing left turn to 3000 direct GANDS WP and hold.

AWOS-3 119.475	FAYETTEVILLE APP CON 133.0 295.0	UNICOM 122.8 (CTAF) 0
--------------------------	--	---------------------------------



SE-2, 22 OCT 2009 to 19 NOV 2009

SE-2, 22 OCT 2009 to 19 NOV 2009

Procedure Turn NA	EXBEL	EBURY	RWY 15	
2100	152°	2000	720	
5 NM		4 NM	1.7 NM	
*800 when using Fayetteville altimeter setting.		*720		
CATEGORY	A	B	C	D
S-15	580-1	447 (500-1)	580-1½	447 (500-1½)
CIRCLING	640-1	507 (600-1)	640-1½	800-2 507 (600-1½) 667 (700-2)
FAYETTEVILLE ALTIMETER SETTING MINIMUMS				
S-15	660-1	527 (600-1)	660-1½	660-1¾ 527 (600-1¾)
CIRCLING	700-1	567 (600-1)	700-1¾	880-2½ 567 (600-1¾) 747 (800-2½)

ELEV 133

152° to RWY 15

TDZE 133

4998 X 75

△ 273±

△ 33

GPS RWY 15

REIL Rwy 33 0
MRL Rwy 15-33 0