

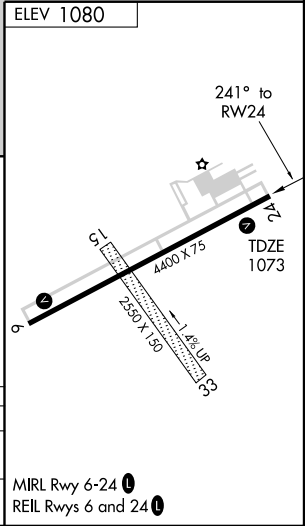
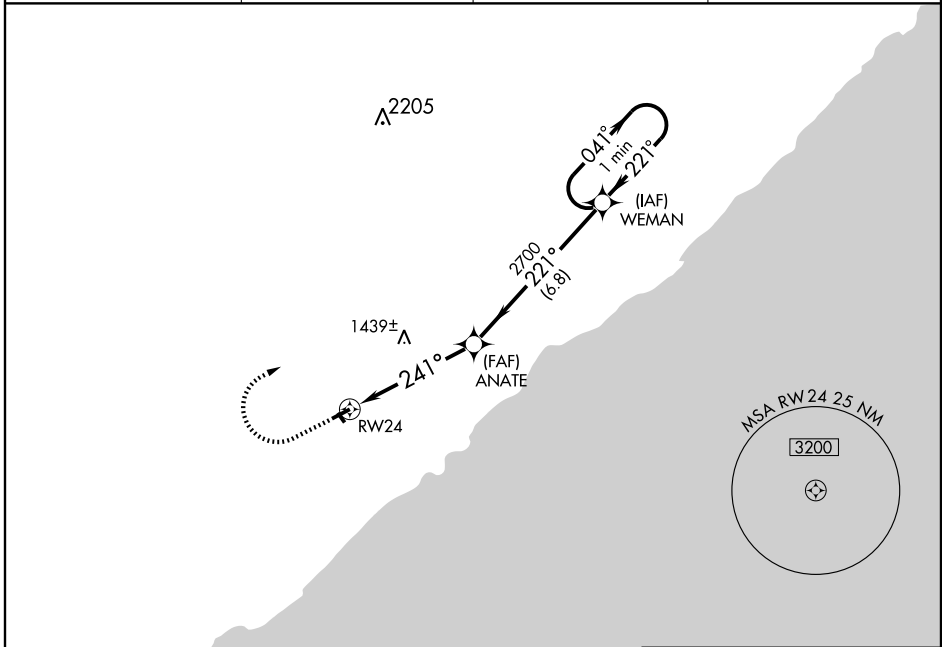
# GPS RWY 24

TWO HARBORS/RICHARD B HELGESON (TWM)

APP CRS <b>241°</b>	Rwy Idg <b>4400</b>
	TDZE <b>1073</b>
	Apt Elev <b>1080</b>

<p><b>▲ NA</b></p>		<p>MISSED APPROACH: Climb to 2000 then climbing right turn to 3300 direct WEMAN WP and hold.</p>	
--------------------	--	--	--

AWOS-3 <b>119.325</b>	DULUTH APP CON* <b>125.45 255.9</b>	GCO <b>121.725</b>	CTAF <b>122.9 0</b>
--------------------------	--	-----------------------	------------------------



2000	3300	WEMAN	One Minute Holding Pattern	
<p>ANATE</p> <p>2700</p> <p>041° → 3300</p> <p>← 221°</p> <p>RW24 241°</p> <p>5 NM</p> <p>6.8 NM</p>				
CATEGORY	A	B	C	D
S-24	1580-1	507 (500-1)	NA	
CIRCLING	1660-1 580 (600-1)	1740-1 660 (700-1)	NA	

NC-1, 22 OCT 2009 to 19 NOV 2009

NC-1, 22 OCT 2009 to 19 NOV 2009

# GPS RWY 24