

RNAV (GPS) RWY 36

MONETT MUNI (HFJ)

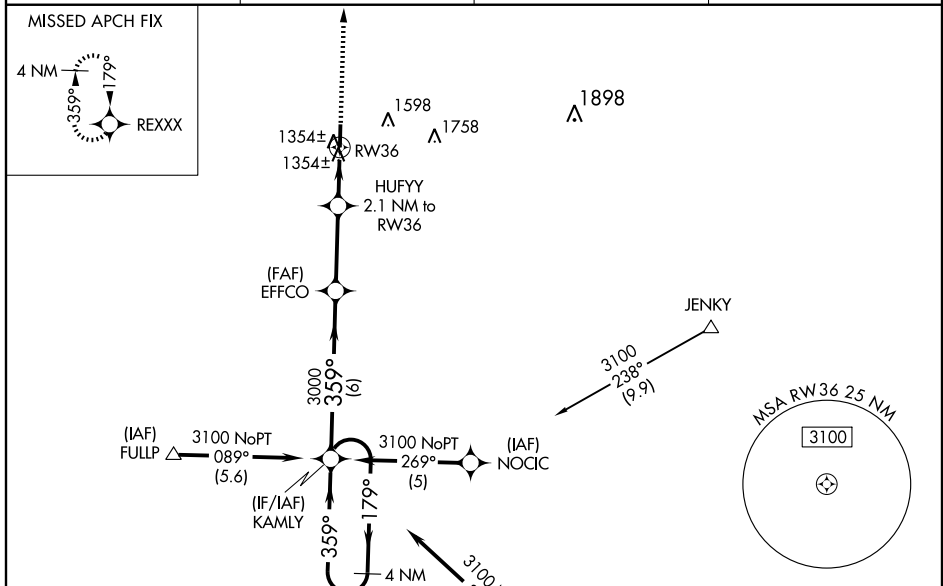
WAAS CH 69303 W36A	APP CRS 359°	Rwy Idg TDZE Apt Elev	5000 1300 1314
--	------------------------	-----------------------------	---

▼ Inoperative table does not apply to LNAV/VNAV all Cats. For uncompensated Baro-VNAV systems, LNAV/VNAV NA below -17°C (2°F) or above 54°C (130°F). DME/DME RNP-0.3 NA. Visibility reduction by helicopters NA. Baro-VNAV and VDP NA when using Joplin altimeter setting. When local altimeter setting not received, use Joplin altimeter setting and increase all DA 111 feet and all MDA 120 feet. Increase LPV and LNAV/VNAV visibility ½ mile all Cats.

MALSF

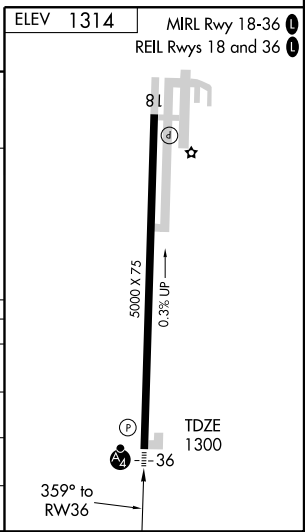
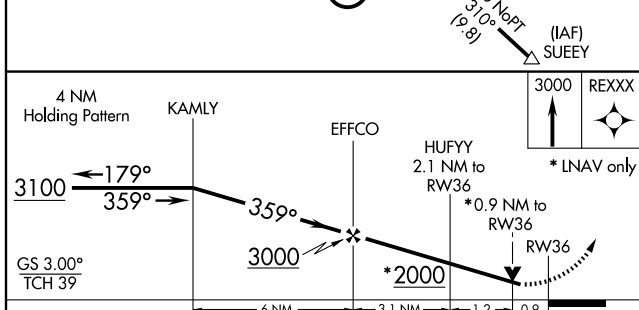
MISSED APPROACH:
Climb to 3000 direct REXXX and hold.

AWOS-3 118.275	SPRINGFIELD APP CON 124.95 318.2	CLNC DEL 121.85	UNICOM 123.075 (CTAF)
--------------------------	--	---------------------------	---------------------------------



NC-3, 22 OCT 2009 to 19 NOV 2009

NC-3, 22 OCT 2009 to 19 NOV 2009



CATEGORY	A	B	C	D
LPV DA	1577-1	277 (300-1)		NA
LNAV/VNAV DA	1655-1¼	355 (400-1¼)		NA
LNAV MDA	1620-¾	320 (400-¾)		NA
CIRCLING	1700-1 386 (400-1)	1780-1 466 (500-1)		NA