

# RNAV (GPS) RWY 18

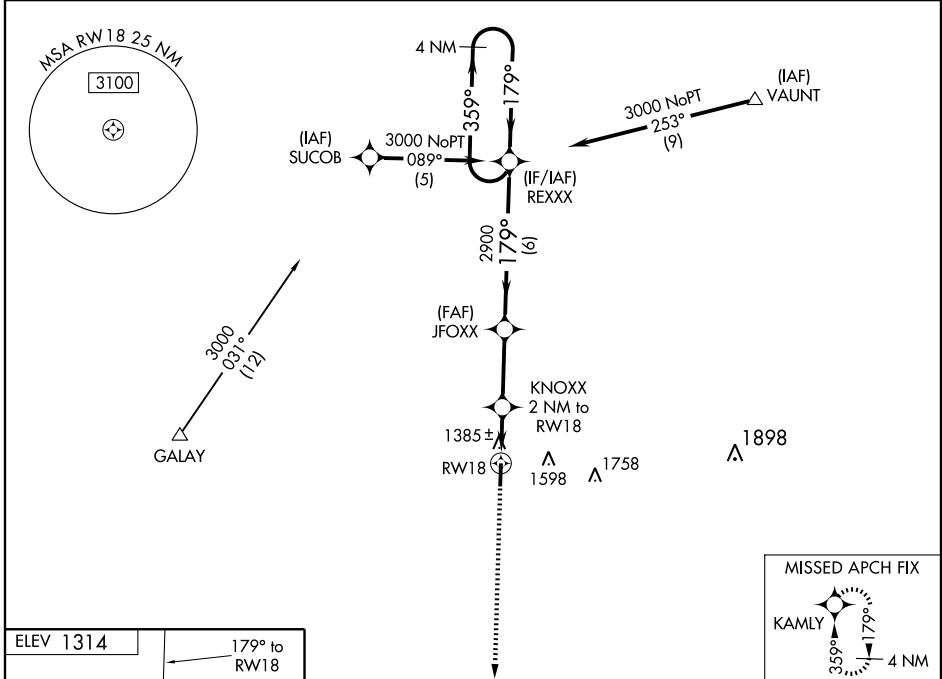
MONETT MUNI(HFJ)

WAAS CH <b>53403</b> W18A	APP CRS <b>179°</b>	Rwy Idg TDZE Apt Elev	<b>5000</b> <b>1314</b> <b>1314</b>
---------------------------------	------------------------	-----------------------------	---

**⚠** For uncompensated Baro-VNAV systems, LNAV/VNAV NA below -17°C (2°F) or above 54°C (130°F).  
**⚠** DME/DME RNP-0.3 NA. When local altimeter setting not received, use Joplin altimeter setting and increase all DA 111 feet and all MDA 120 feet. Increase LPV and LNAV/VNAV visibility all Cats ½ mile. Baro-VNAV and VDP NA when using Joplin altimeter setting.

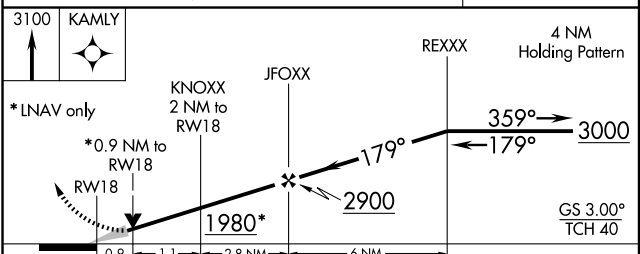
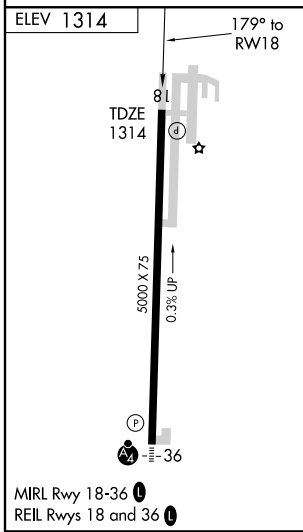
**MISSED APPROACH:** Climb to 3100 direct KAMLY and hold.

AWOS-3 <b>118.275</b>	SPRINGFIELD APP CON <b>124.95 318.2</b>	CLNC DEL <b>121.85</b>	UNICOM <b>123.075</b> (CTAF) <b>📻</b>
--------------------------	--	---------------------------	--



NC-3, 22 OCT 2009 to 19 NOV 2009

NC-3, 22 OCT 2009 to 19 NOV 2009



CATEGORY	A	B	C	D
LPV DA	1 614-1	300 (300-1)		NA
LNAV/VNAV DA	1 663-1¼	349 (400-1¼)		NA
LNAV MDA	1 640-1	326 (400-1)		NA
CIRCLING	1 700-1 386 (400-1)	1 780-1 466 (500-1)		NA