

HUGO, OKLAHOMA

AL-6979 (FAA)

# NDB or GPS RWY 35

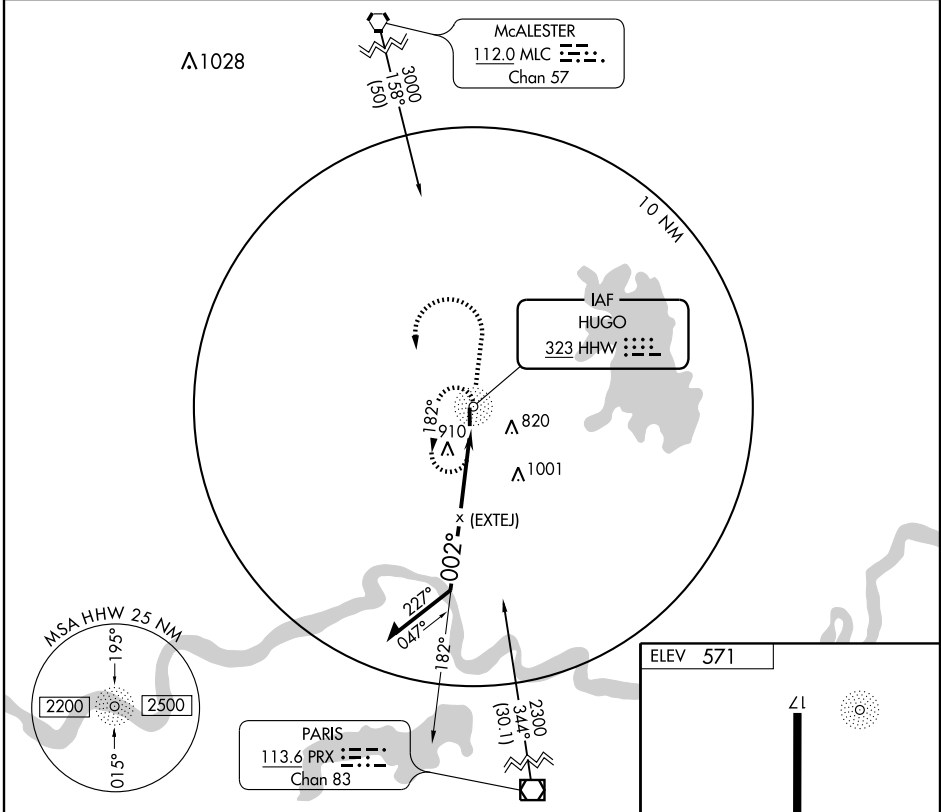
HUGO/STAN STAMPER MUNI (HHW)

NDB HHW <b>323</b>	APP CRS <b>002°</b>	Rwy Idg TDZE Apt Elev	<b>4007</b> <b>571</b> <b>571</b>
-----------------------	------------------------	-----------------------------	---

**▲ NA**

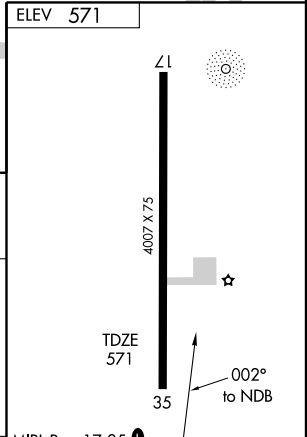
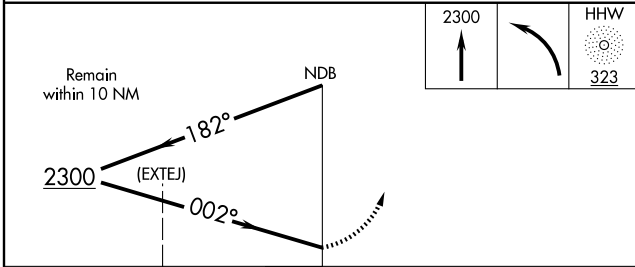
MISSED APPROACH: Climb to 2300 then left turn direct HHW NDB and hold.

AWOS-3 <b>119.025</b>	FORT WORTH CENTER <b>124.875 307.2</b>	UNICOM <b>122.8 (CTAF) 0</b>
--------------------------	---	---------------------------------



SC-1, 22 OCT 2009 to 19 NOV 2009

SC-1, 22 OCT 2009 to 19 NOV 2009



CATEGORY	A	B	C	D	MIRL Rwy 17-35 0
S-35	1260-1	689 (700-1)		NA	Knots 60 90 120 150 180
CIRCLING	1260-1	689 (700-1)		NA	Min:Sec

HUGO, OKLAHOMA  
Amdt 1 08157

34°02'N - 95°33'W

# HUGO/STAN STAMPER MUNI (HHW)

## NDB or GPS RWY 35