

YAZOO CITY, MISSISSIPPI

VORTAC JAN <b>112.6</b> Chan <b>73</b>	APP CRS <b>321°</b>	Rwy Idg TDZE Apt Elev	<b>5000</b> <b>104</b> <b>104</b>
--	------------------------	-----------------------------	---

AL-6977 (FAA)

# VOR/DME RWY 35

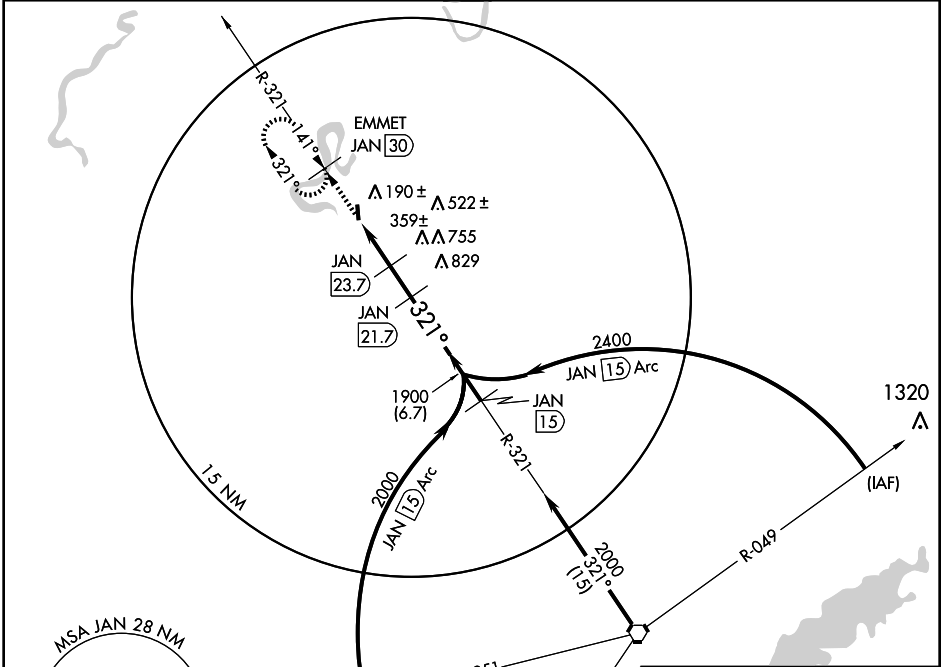
YAZOO COUNTY (87I)

**▲** NA Use Jackson altimeter setting.

MISSED APPROACH: Climb to 2000 direct EMMET 30 DME and hold.

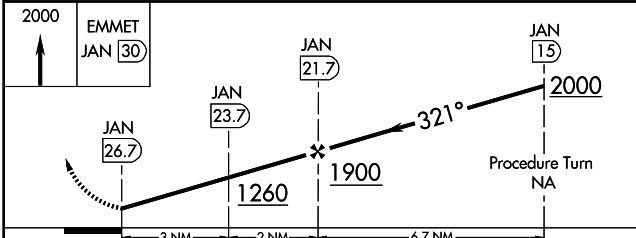
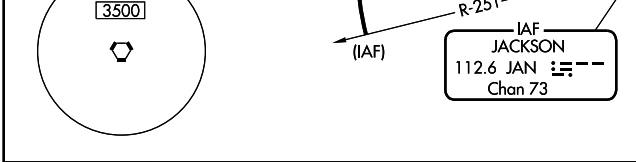
MEMPHIS CENTER  
**132.5 259.1**

UNICOM  
**122.8 (CTAF) 0**

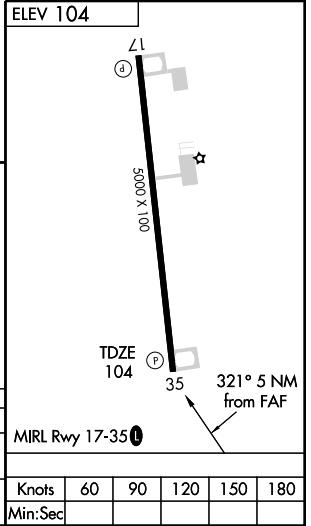


SC-4, 22 OCT 2009 to 19 NOV 2009

SC-4, 22 OCT 2009 to 19 NOV 2009



CATEGORY	A	B	C	D
S-35	780-1 676 (700-1)	780-1¼ 676 (700-1¼)	780-2 676 (700-2)	780-2¼ 676 (700-2¼)
CIRCLING	780-1 676 (700-1)	780-1¼ 676 (700-1¼)	780-2 676 (700-2)	780-2¼ 676 (700-2¼)



Knots	60	90	120	150	180
Min:Sec					

YAZOO CITY, MISSISSIPPI  
Orig-A 09127

32° 53'N-90° 28'W

# VOR/DME RWY 35

YAZOO COUNTY (87I)