

YAZOO CITY, MISSISSIPPI

VORTAC JAN  
**112.6**  
 Chan **73**

APP CRS  
**141°**

Rwy Idg **5000**  
 TDZE **104**  
 Apt Elev **104**

AL-6977 (FAA)

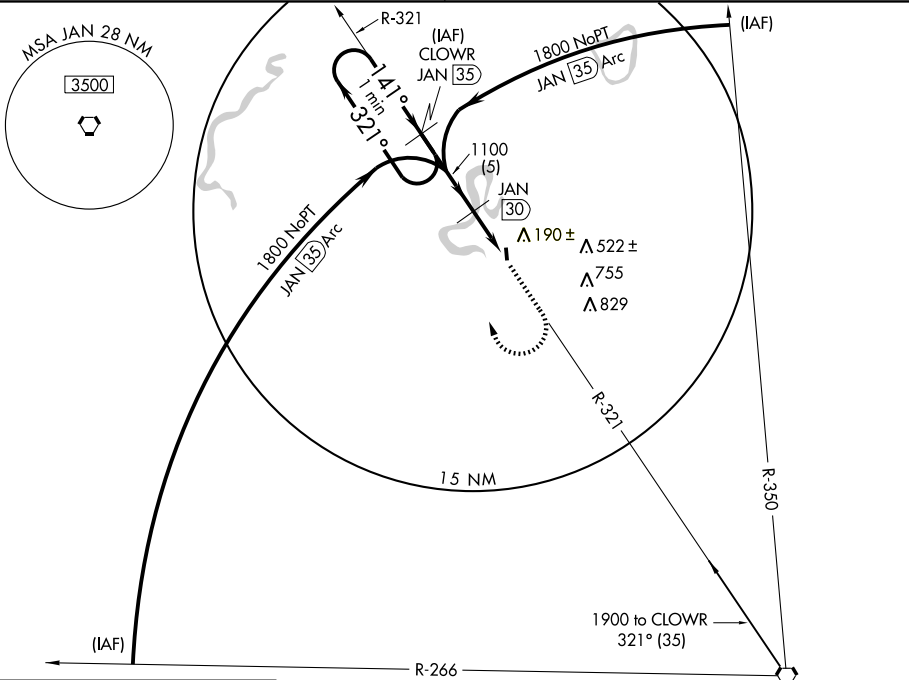
**VOR/DME RWY 17**  
 YAZOO COUNTY (87I)

▲ NA Use Jackson altimeter setting.

MISSED APPROACH: Climb to 1000 then climbing right turn to 1800 via JAN R-321 to CLOWR 35 DME and hold.

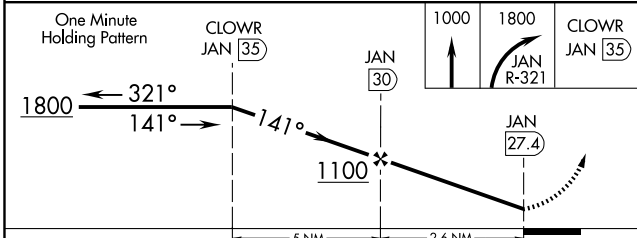
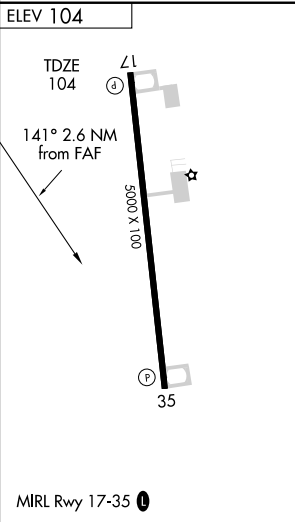
MEMPHIS CENTER  
**132.5 259.1**

UNICOM  
**122.8 (CTAF)**



SC-4, 22 OCT 2009 to 19 NOV 2009

SC-4, 22 OCT 2009 to 19 NOV 2009



CATEGORY	A	B	C	D
S-17	700-1 596 (600-1)	700-1¼ 596 (600-1¼)	700-1½ 596 (600-1½)	700-2 596 (600-2)
CIRCLING	700-1 596 (600-1)	700-1¼ 596 (600-1¼)	700-1½ 596 (600-1½)	700-2 596 (600-2)

YAZOO CITY, MISSISSIPPI  
 Orig 09127

32°53'N-90°28'W

YAZOO COUNTY (87I)  
**VOR/DME RWY 17**