

YAZOO CITY, MISSISSIPPI

AL-6977 (FAA)

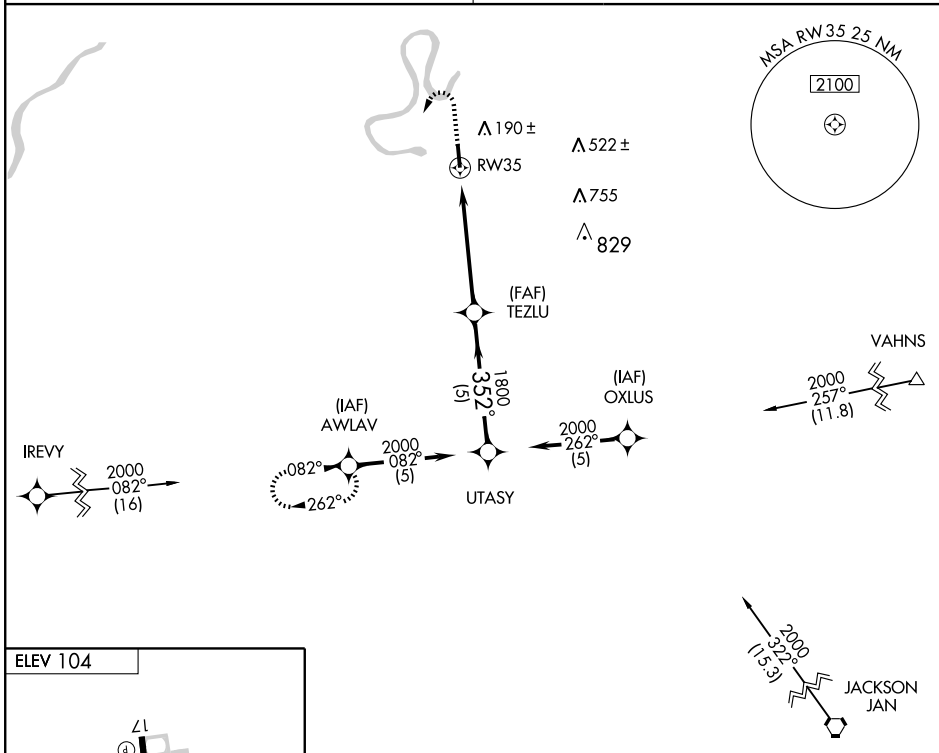
# GPS RWY 35

YAZOO COUNTY (87I)

APP CRS	Rwy Idg	<b>5000</b>
<b>352°</b>	TDZE	<b>104</b>
	Apt Elev	<b>104</b>

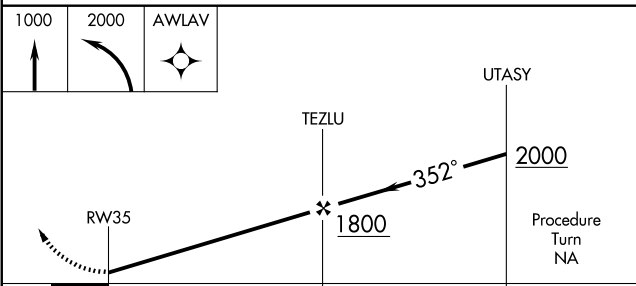
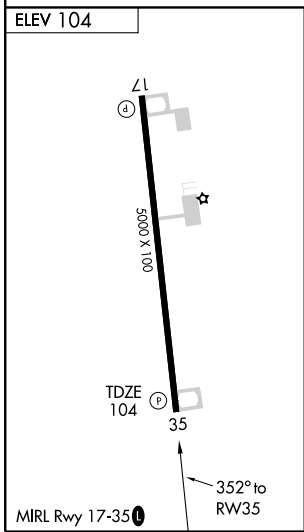
**▲ NA** Use Jackson altimeter setting. MISSED APPROACH: Climb to 1000, then climbing left turn to 2000 direct AWLAV WP and hold.

MEMPHIS CENTER **132.5 259.1** UNICOM **122.8 (CTAF)** **1**



SC-4, 22 OCT 2009 to 19 NOV 2009

SC-4, 22 OCT 2009 to 19 NOV 2009



CATEGORY	A	B	C	D
S-35	780-1 676 (700-1)		780-2 676 (700-2)	NA
CIRCLING	780-1 676 (700-1)		780-2 676 (700-2)	NA

YAZOO CITY, MISSISSIPPI  
Orig 09127

32° 53' N-90° 28' W

YAZOO COUNTY (87I)  
**GPS RWY 35**