

YAZOO CITY, MISSISSIPPI

AL-6977 (FAA)

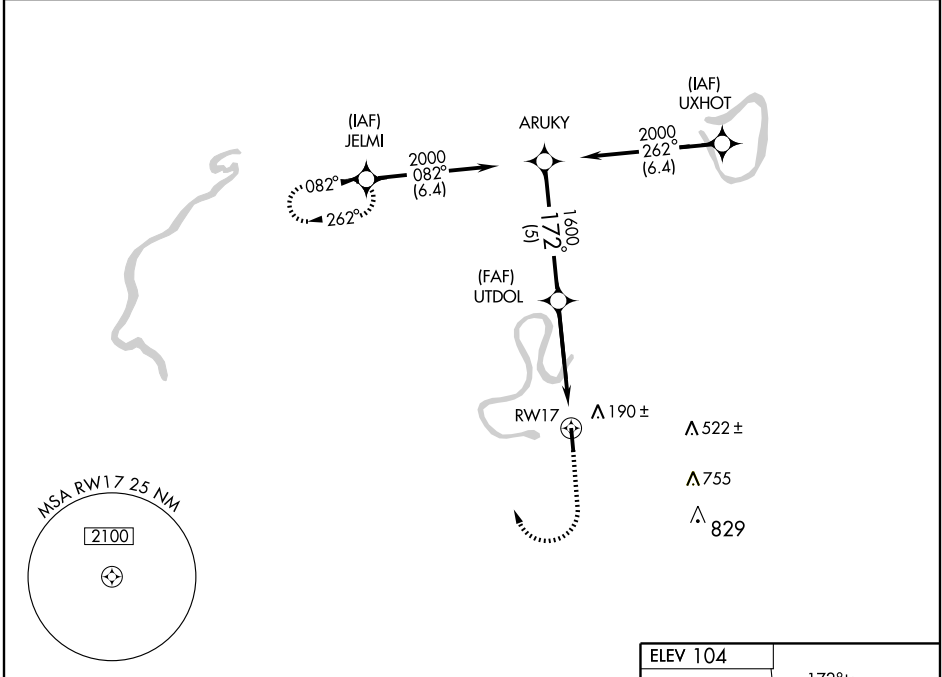
# GPS RWY 17

YAZOO COUNTY (871)

APP CRS	Rwy Idg	<b>5000</b>
<b>172°</b>	TDZE	<b>104</b>
	Apt Elev	<b>104</b>

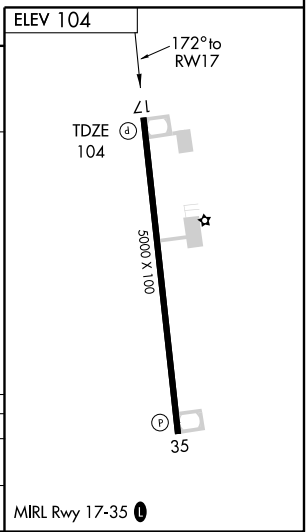
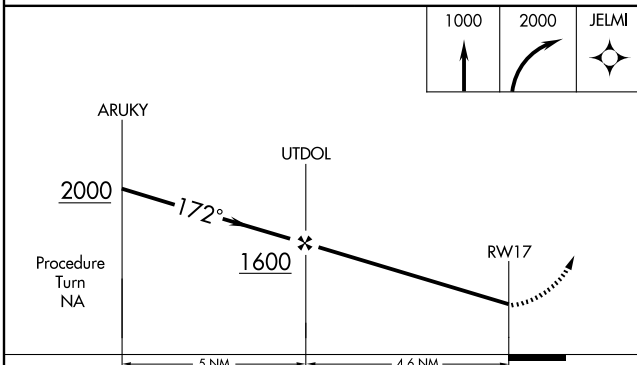
**▲** NA Use Jackson altimeter setting. MISSED APPROACH: Climb to 1000, then climbing right turn to 2000 direct JELMI WP and hold.

MEMPHIS CENTER <b>132.5 259.1</b>	UNICOM <b>122.8 (CTAF) 0</b>
--------------------------------------	---------------------------------



SC-4, 22 OCT 2009 to 19 NOV 2009

SC-4, 22 OCT 2009 to 19 NOV 2009



CATEGORY	A	B	C	D
S-17	600-1 496 (500-1)		600-1 ¼ 496 (500-1 ¼)	NA
CIRCLING	640-1 536 (600-1)		640-1 ½ 536 (600-1 ½)	NA

YAZOO CITY, MISSISSIPPI  
Orig 09127

32°53'N-90°28'W

# YAZOO COUNTY (871)

## GPS RWY 17

MIRL Rwy 17-35 0