

OSCEOLA, IOWA

AL-6974 (FAA)

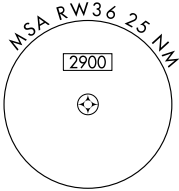
GPS RWY 36

OSCEOLA MUNI (I75)

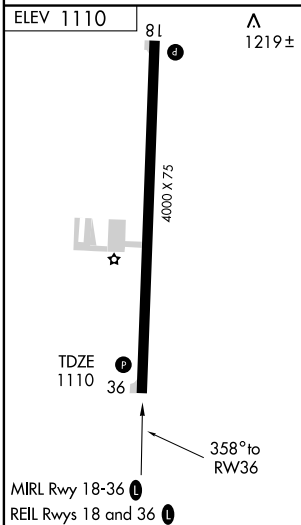
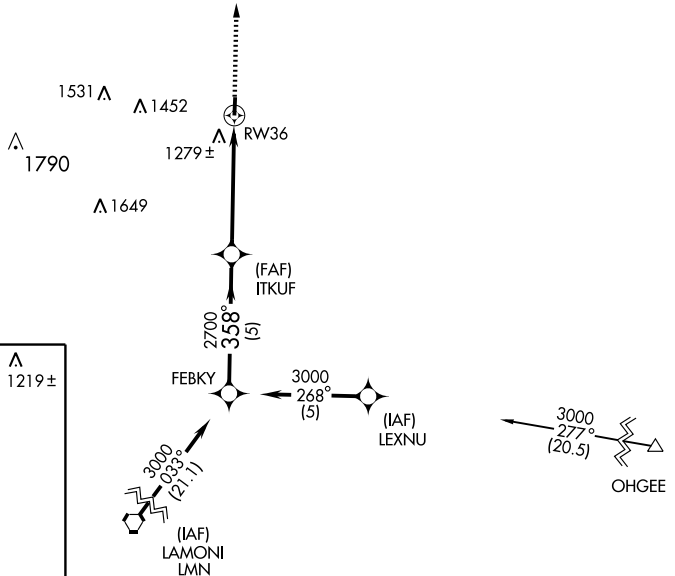
APP CRS	Rwy Idg	4000
358°	TDZE	1110
	Apt Elev	1110

▲ NA	Use Des Moines altimeter setting.	MISSED APPROACH: Climb to 3000 direct JAXWU WP and hold.
-------------	-----------------------------------	--

AWOS-3 120.975	DES MOINES APP CON 135.2 360.7	UNICOM 122.8 (CTAF) 0
--------------------------	--	---------------------------------



NC-3, 22 OCT 2009 to 19 NOV 2009



FEBKY	3000		ITKUF	RWY36	3000	JAXWU
	358°				2700	↑
Procedure Turn NA	5 NM		5 NM			
CATEGORY	A	B	C	D		
S-36	1620-1	510 (600-1)			NA	
CIRCLING	1680-1	570 (600-1)			NA	

NC-3, 22 OCT 2009 to 19 NOV 2009

OSCEOLA, IOWA
Orig 09127

41°03'N-93°41'W

OSCEOLA MUNI (I75) GPS RWY 36