

OSCEOLA, IOWA

AL-6974 (FAA)

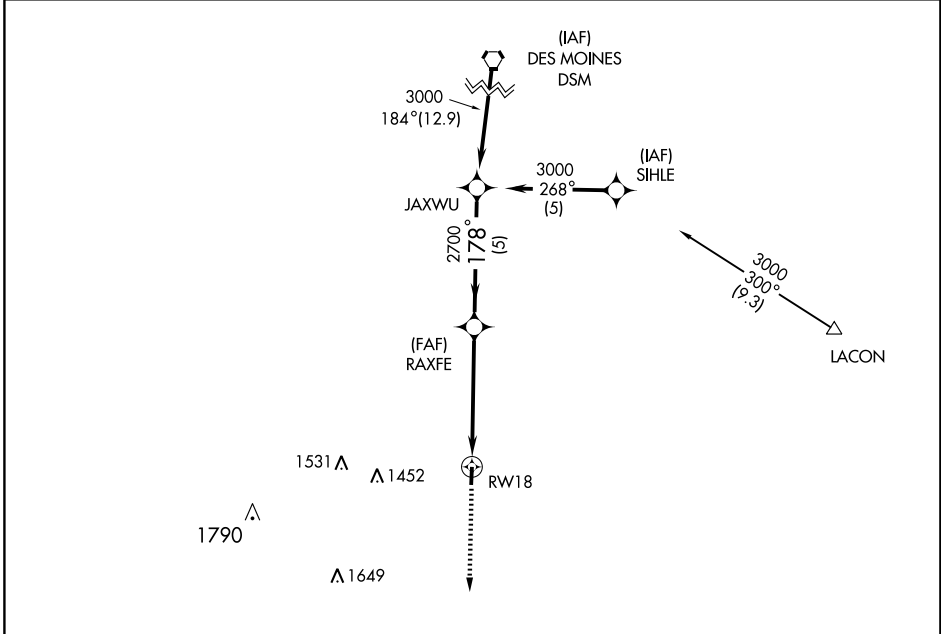
# GPS RWY 18

OSCEOLA MUNI (I75)

APP CRS	Rwy Idg	<b>4000</b>
<b>178°</b>	TDZE	<b>1110</b>
	Apt Elev	<b>1110</b>

<b>▲ NA</b>	Use Des Moines altimeter setting.	MISSED APPROACH: Climb to 3000 direct FEBKY WP and hold.
-------------	-----------------------------------	--

AWOS-3 <b>120.975</b>	DES MOINES APP CON <b>135.2 360.7</b>	UNICOM <b>122.8 (CTAF) 0</b>
--------------------------	--	---------------------------------



NC-3, 22 OCT 2009 to 19 NOV 2009

NC-3, 22 OCT 2009 to 19 NOV 2009

ELEV 1110

TDZE 1110

8L

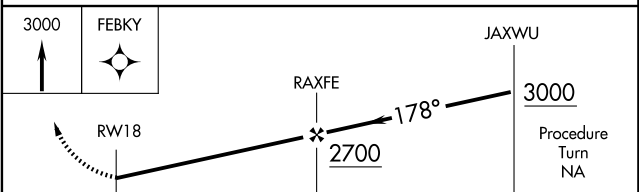
178° to RWY18

4000 X 75

36

MIRL Rwy 18-36

REIL Rwy 18 and 36



CATEGORY	A	B	C	D
S-18	1560-1	450 (500-1)		NA
CIRCLING	1680-1	570 (600-1)		NA

OSCEOLA, IOWA  
Orig 09127

41°03'N-93°41'W

# OSCEOLA MUNI (I75)

## GPS RWY 18