

RNAV(GPS) RWY 36

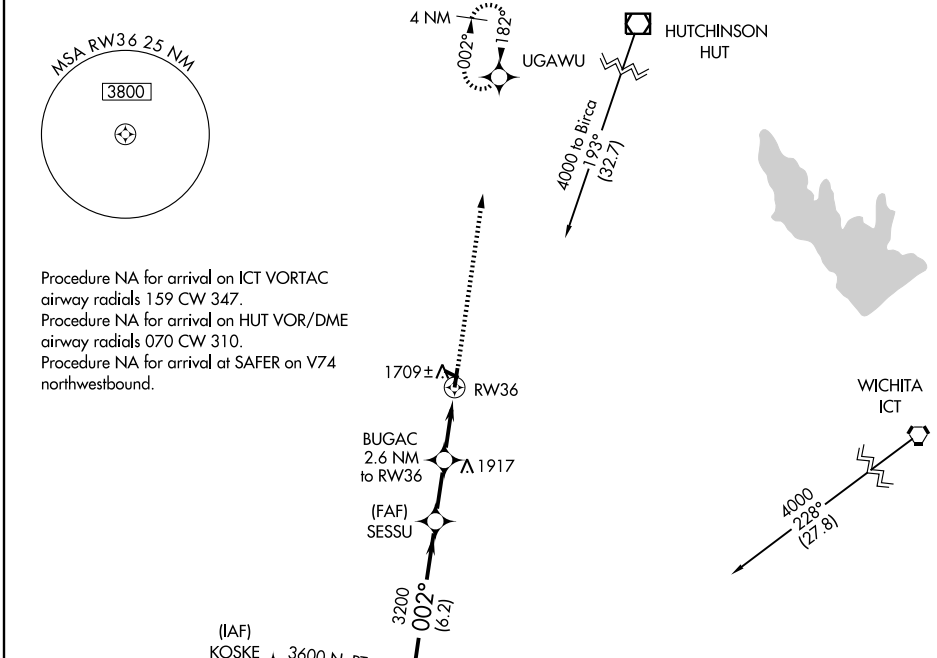
KINGMAN AIRPORT - CLYDE CESSNA FIELD (9K8)

APP CRS	Rwy Idg	4300
002°	TDZE	1597
	Apt Elev	1605

NA GPS or RNP-0.3 Required. DME/DME RNP-0.3 NA. Use Wichita Mid-Continent altimeter setting. Procedure NA at night.

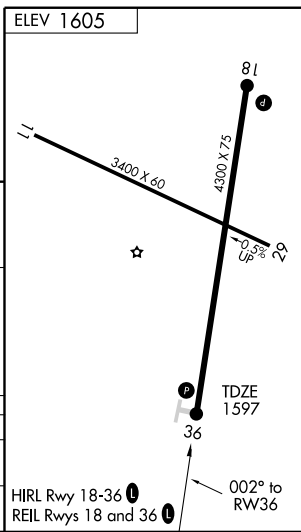
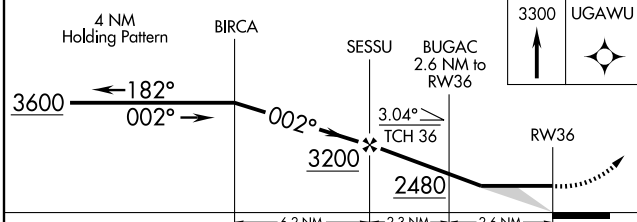
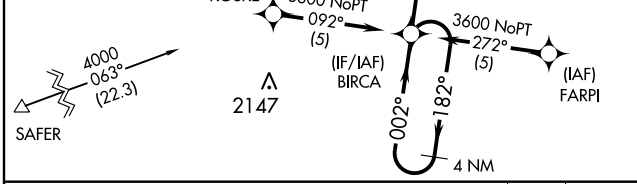
MISSED APPROACH: Climb to 3300 direct UGAWU WP and hold.

AWOS-3 119.325	WICHITA APP CON 125.5 306.2	UNICOM 122.8 (CTAF) 0
--------------------------	---------------------------------------	---------------------------------



NC-2, 22 OCT 2009 to 19 NOV 2009

NC-2, 22 OCT 2009 to 19 NOV 2009



CATEGORY	A	B	C	D
RNAV MDA	2080-1	483 (500-1)	2080-1¼ 483 (500-1¼)	NA
CIRCLING	2160-1	555 (600-1)	2160-1½ 555 (600-1½)	NA