

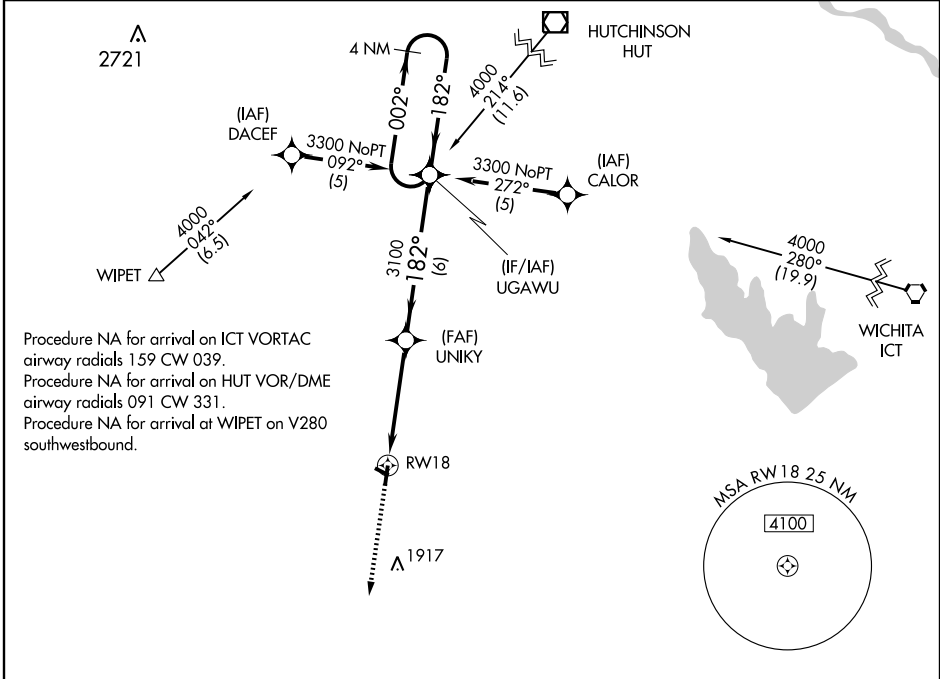
RNAV(GPS) RWY 18

KINGMAN AIRPORT - CLYDE CESSNA FIELD (9K8)

APP CRS 182°	Rwy Idg 4300
	TDZE 1599
	Apt Elev 1605

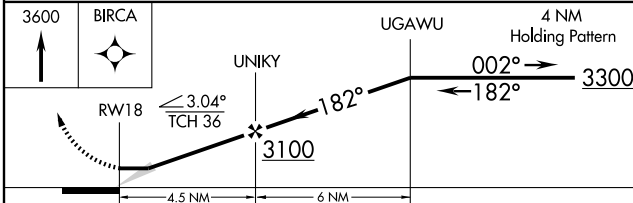
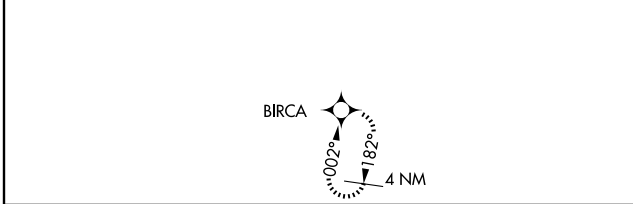
NA	GPS or RNP-0.3 Required. DME/DME RNP-0.3 NA. Use Wichita Mid-Continent altimeter setting.	MISSED APPROACH: Climb to 3600 direct BIRCA WP and hold.
-----------	---	--

AWOS-3 119.325	WICHITA APP CON 125.5 306.2	UNICOM 122.8 (CTAF)
--------------------------	---------------------------------------	-------------------------------



NC-2, 22 OCT 2009 to 19 NOV 2009

NC-2, 22 OCT 2009 to 19 NOV 2009



CATEGORY	A	B	C	D
LNAV MDA	2120-1	521 (600-1)	2120-1½ 521 (600-1½)	NA
CIRCLING	2160-1	555 (600-1)	2160-1½ 555 (600-1½)	NA

