

MILTON, WEST VIRGINIA

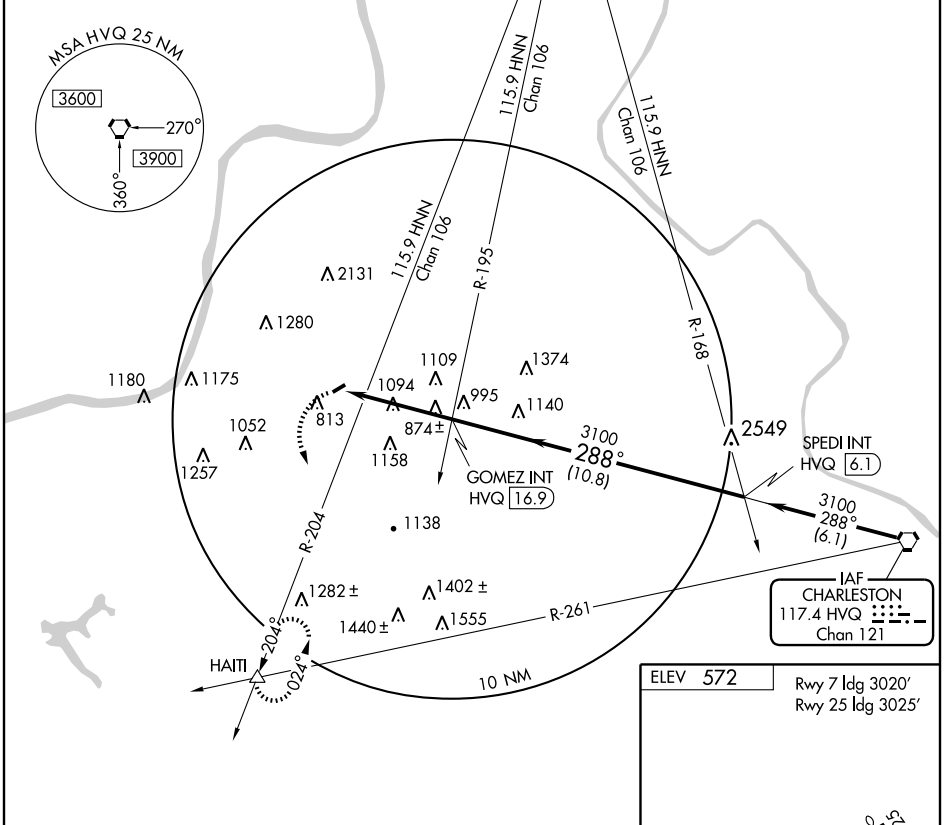
AL-6971 (FAA)

VOR-A

MILTON/ONA AIRPARK (12V)

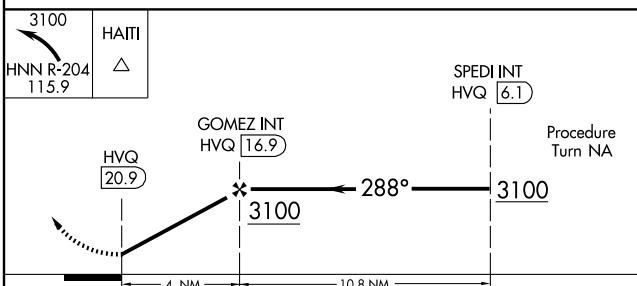
VORTAC HVQ 117.4 Chan 121	APP CRS 288°	Rwy Idg TDZE Apt Elev	N/A N/A 572
---	------------------------	-----------------------------	--------------------------

<p>▼ Use Huntington altimeter setting. Circling not authorized Northwest of Rwy 7-25. Procedure not authorized at night.</p> <p>▲ NA</p>	<p>MISSED APPROACH: Climbing left turn to 3100 via HNN R-204 to HAITI Int and hold.</p>
<p>CHARLESTON APP CON 124.1 269.125</p>	<p>UNICOM 122.8 (CTAF)</p>



NE-4, 22 OCT 2009 to 19 NOV 2009

NE-4, 22 OCT 2009 to 19 NOV 2009



ELEV 572	Rwy 7 Idg 3020'
	Rwy 25 Idg 3025'
<p>IAF CHARLESTON 117.4 HVQ Chan 121</p>	
LIRL Rwy 7-25	
FAF to MAP 4 NM	
Knots	60 90 120 150 180
Min:Sec	4:00 2:40 2:00 1:36 1:20

CATEGORY	A	B	C	D
CIRCLING	1500-1¼ 928 (1000-1¼)	NA		

MILTON, WEST VIRGINIA
Amdt 2 07130

38°26'N - 82°12'W

MILTON/ONA AIRPARK (12V)

VOR-A