

MILTON, WEST VIRGINIA

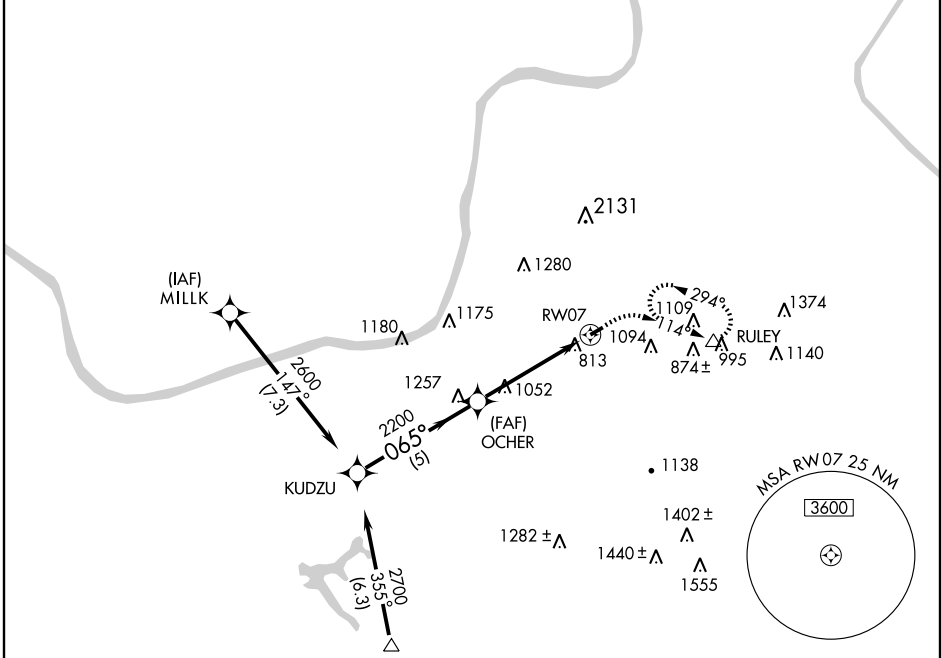
AL-6971 (FAA)

GPS RWY 7

MILTON/ONA AIRPARK (12V)

APP CRS	Rwy Idg	3020
065°	TDZE	572
	Apt Elev	572

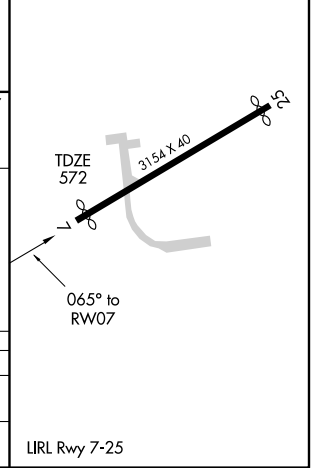
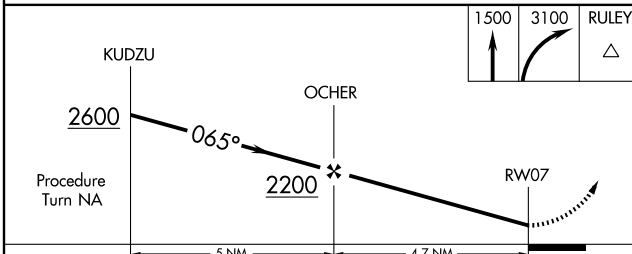
<p>▽ Use Huntington altimeter setting. Circling not authorized Northwest of Rwy 7-25. Procedure not authorized at night.</p> <p>▲ NA</p>	<p>MISSED APPROACH: Climb to 1500 then climbing right turn to 3100 direct RULEY and hold.</p>
<p>CHARLESTON APP CON 124.1 269.125</p>	<p>UNICOM 122.8 (CTAF)</p>



NE-4, 22 OCT 2009 to 19 NOV 2009

NE-4, 22 OCT 2009 to 19 NOV 2009

ELEV 572	Rwy 7 Idg 3020'
	Rwy 25 Idg 3025'



CATEGORY	A	B	C	D
S-7	1480-1¼ 908 (1000-1¼)		NA	
CIRCLING	1480-1¼ 908 (1000-1¼)		NA	

MILTON, WEST VIRGINIA
Orig 07130

38°26'N - 82°12'W

MILTON/ONA AIRPARK (12V)

GPS RWY 7