

# NORTHTOWN TWO DEPARTURE

ATIS 118.05  
GND CON 121.7  
UNICOM 122.95  
CTAF 125.7

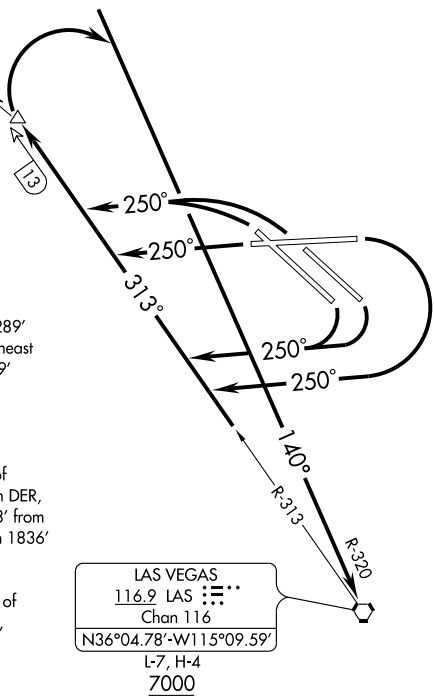
### TAKE-OFF MINIMUMS

Rwy 7: Standard with minimum climb of 322' per NM to 5000.  
Rwy 12L: Standard with minimum climb of 393' per NM to 5000.  
Rwy 12R: Standard with minimum climb of 373' per NM to 5000.  
Rwy 25: Standard with minimum climb of 341' per NM to 5000.  
Rwy 30L: Standard with minimum climb of 315' per NM to 5700.  
Rwy 30R: Standard with minimum climb of 302' per NM to 5700.

### TAKE-OFF OBSTACLE NOTES

- Rwy 7: Tower 1.1 NM from DER, 1044' right of centerline, 252' AGL/2348' MSL.
- Rwy 12R: Multiple towers 1.0 NM from DER, 850' right of centerline, up to 267' AGL/2368' MSL. Tower 1.2 NM from DER, 1355' right of centerline, 270' AGL/2367' MSL. Power lines 1122' from DER, 764' right of centerline, traversing to the southeast out to 2345' from DER, 510' right of centerline, 106' AGL/2344' MSL.
- Rwy 12L: Light pole 254' from DER, 462' right of centerline, 36' AGL/2159' MSL. Trucks on road 255' from DER, 502' right of centerline, 15' AGL/2155' MSL. Powerlines 1289' from DER, 663' right of centerline traversing to the northeast out to 1576' from DER, 716' left of centerline, up to 129' AGL/2226' MSL. Multiple towers 5045' from DER, 1551' right of centerline, 267' AGL/2368' MSL.
- Rwy 25: Light pole 1447' from DER, 21' right of centerline, 35' AGL/2255' MSL.
- Rwy 30L: Multiple towers/antennas 2745' from DER, 1035' left of centerline, up to 84' AGL/2327' MSL. Tree 2895' from DER, 511' left of centerline, 59' AGL/2294' MSL. Tree 3028' from DER, 78' right of centerline, 57' AGL/2296' MSL. Sign 1836' from DER, 379' left of centerline, 48' AGL/2266' MSL. Building 2070' from DER, 249' left of centerline, 49' AGL/2271' MSL. Light pole 1692' from DER, 236' left of centerline, 37' AGL/2252' MSL. Sign 1800' from DER, 561' left of centerline, 36' AGL/2254' MSL. Tree 1785' from DER, 525' right of centerline, 42' AGL/2250' MSL.
- Rwy 30R: Antenna tower 4639' from DER, 1736' left of centerline, 84' AGL/2327' MSL. Anemometer 552' from DER, 570' left of centerline, 34' AGL/2216' MSL. Vent on building 1632' from DER, 566' right of centerline, 58' AGL/2240' MSL. Antenna on hangar 2012' from DER, 195' right of centerline, 61' AGL/2247' MSL.

RUZCO  
N36°15.39'  
W115°17.78'  
5000



LAS VEGAS  
116.9 LAS : : :  
Chan 116  
N36°04.78'-W115°09.59'  
L-7, H-4  
7000

NOTE: Do not exceed 240 KIAS until established on LAS R-320 inbound.  
NOTE: DME required.  
NOTE: Chart not to scale.

SW-4, 22 OCT 2009 to 19 NOV 2009

SW-4, 22 OCT 2009 to 19 NOV 2009

### DEPARTURE ROUTE DESCRIPTION

TAKE-OFF RUNWAYS 7 and 12 L/R: Climbing right turn via heading 250° and LAS R-313 outbound. Thence....  
TAKE-OFF RUNWAY 25: Climb via heading 250° and LAS R-313 outbound. Thence....  
TAKE-OFF RUNWAYS 30L/R: Climbing left turn via heading 250° and LAS R-313 outbound. Thence....  
....via LAS R-313 maintain 5000 to RUZCO, then climbing right turn to intercept LAS R-320 to LAS VORTAC. Cross LAS VORTAC at or above 7000'.

# NORTHTOWN TWO DEPARTURE