

LAS VEGAS, NEVADA

AL-6970 (FAA)

ILS or LOC RWY 12L

LAS VEGAS/NORTH LAS VEGAS (VGT)

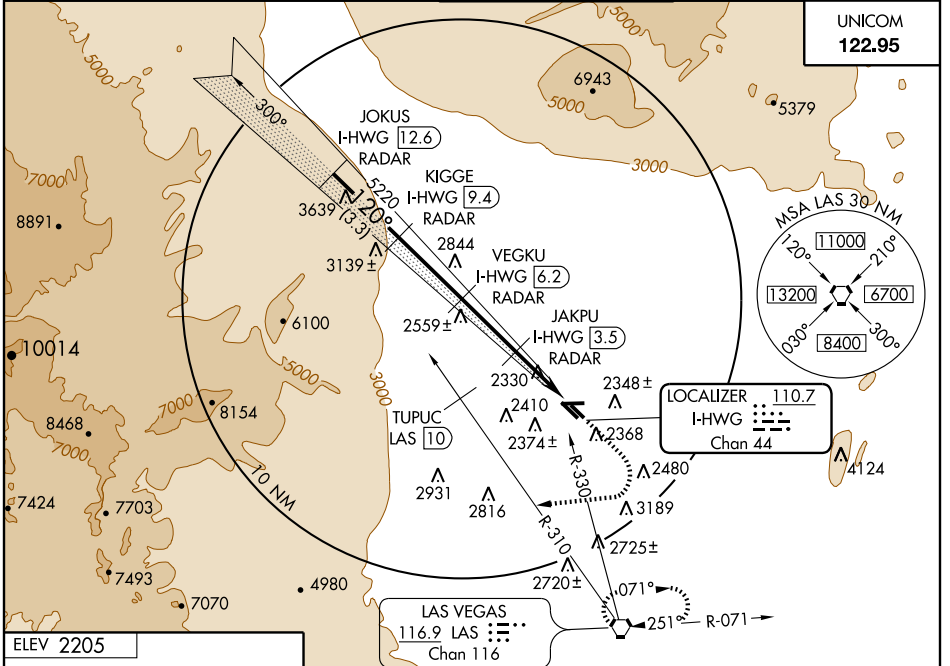
LOC/DME I-HWGW 110.7 Chan 44	APP CRS 120°	Rwy Idg TDZE Apt Elev	4202 2189 2205
--	------------------------	-----------------------------	---

⚠ When local altimeter setting not received, use McCarran Intl altimeter setting and increase DA to 2478, and visibility Cats A/B ¼ mile; increase all MDA 40 feet.
⚠ DME and RADAR required.

MISSED APPROACH: Climb to 2600, then climbing right turn heading 250° to 6000, intercept LAS R-310 outbound to TUPUC/LAS 10 DME then turn right via LAS R-330 inbound to LAS VORTAC and hold.

ATIS 118.05	LAS VEGAS APP CON Rwy 30 119.4 282.2	NELLIS APP CON Rwy 12 118.125 291.725	NORTH LAS VEGAS TOWER* 125.7 (CTAF) 0 360.75	GND CON 121.7	CLNC DEL 124.0
-----------------------	---	--	--	-------------------------	--------------------------

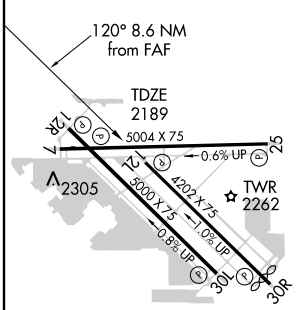
UNICOM
122.95



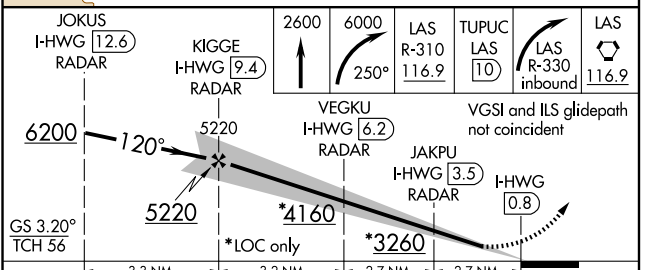
SW-4, 22 OCT 2009 to 19 NOV 2009

SW-4, 22 OCT 2009 to 19 NOV 2009

ELEV 2205



DME and RADAR REQUIRED



CATEGORY	A	B	C	D
S-ILS 12L	2456-1	267 (300-1)		NA
S-LOC 12L	2580-1	391 (400-1)		NA
CIRCLING	2680-1	475 (500-1)		NA

MIRL Rwy 7-25, 12R-30L and 12L-30R

FAF to MAP 8.6 NM

Knots	60	90	120	150	180
Min:Sec	8:36	5:44	4:18	3:26	2:52

LAS VEGAS, NEVADA
Orig-B 09015

36°13'N-115°12'W

LAS VEGAS/NORTH LAS VEGAS (VGT)
ILS or LOC RWY 12L