

LAS VEGAS, NEVADA

AL-6970 (FAA)

# GPS RWY 30L

LAS VEGAS/NORTH LAS VEGAS (VGT)

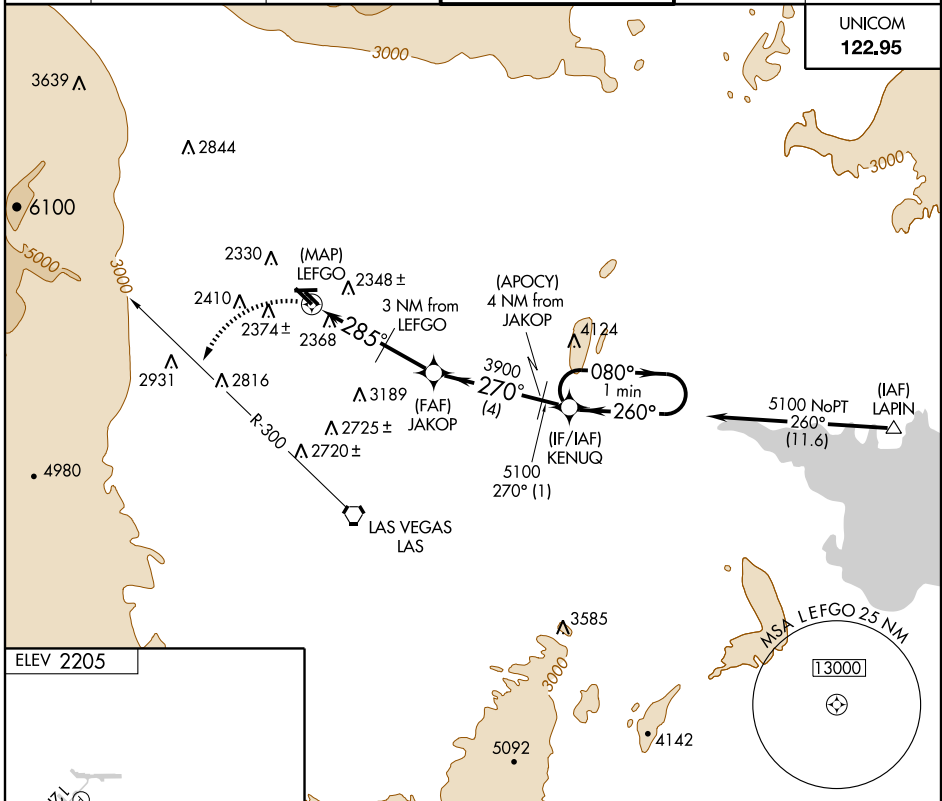
APP CRS	Rwy Idg	<b>5000</b>
<b>285°</b>	TDZE	<b>2191</b>
	Apt Elev	<b>2205</b>

**▽** When local altimeter setting not received, use McCarran Intl altimeter setting and increase all MDA 40 feet and S-30L Cats C/D visibility ¼ mile.  
**▲ NA** Circling to Rwy 12L-30R not authorized.

**MISSED APPROACH:** Climbing left turn to 4000 via heading 220° and LAS R-300 to LAS VORTAC.

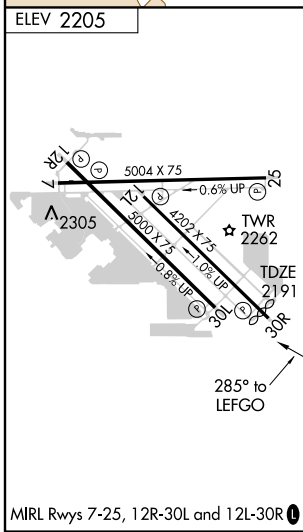
ATIS <b>118.05</b>	LAS VEGAS APP CON Rwy 30 <b>119.4 282.2</b>	NELLIS APP CON Rwy 12 <b>118.125 291.725</b>	NORTH LAS VEGAS TOWER* <b>125.7 (CTAF) 360.75</b>	GND CON <b>121.7</b>	CLNC DEL <b>124.0</b>
-----------------------	---	--	--	-------------------------	--------------------------

UNICOM <b>122.95</b>
-------------------------



SW-4, 22 OCT 2009 to 19 NOV 2009

SW-4, 22 OCT 2009 to 19 NOV 2009



	LAS R-300	LAS	KENUQU		One Minute Holding Pattern
CATEGORY	A	B	C	D	
S-30L	2680-1	489 (500-1)	2680-1¼ 489 (500-1¼)	2680-1½ 489 (500-1½)	
CIRCLING	2720-1	515 (600-1)	2720-1½ 515 (600-1½)	2760-2 555 (600-2)	

LAS VEGAS, NEVADA  
Orig-B 09015

36°13'N - 115°12'W

LAS VEGAS/NORTH LAS VEGAS (VGT)

# GPS RWY 30L