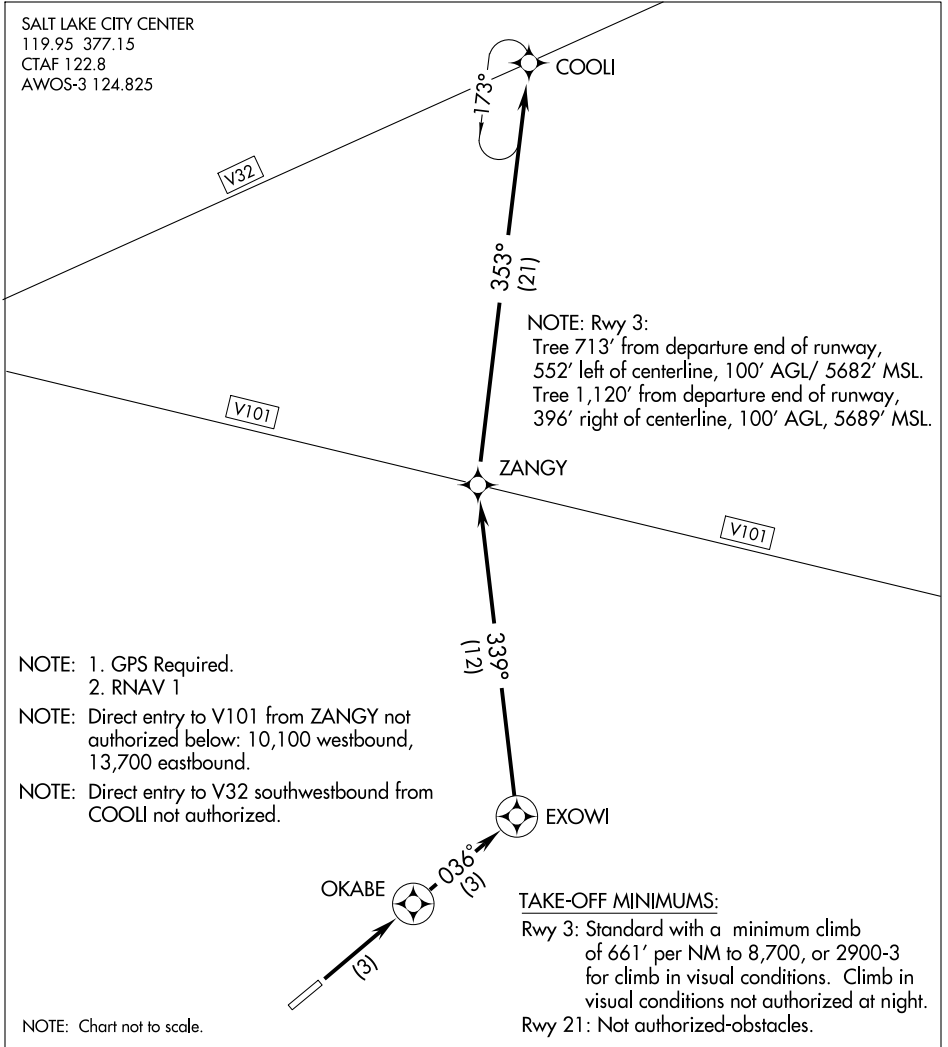


COOL1 ONE DEPARTURE (RNAV) (OBSTACLE)



SW-4, 22 OCT 2009 to 19 NOV 2009

SW-4, 22 OCT 2009 to 19 NOV 2009

DEPARTURE ROUTE DESCRIPTION

TAKE-OFF RUNWAY 3: Climb to 12,000 (or assigned altitude) direct OKABE and 036° track to EXOWI, Then via depicted route to COOL1, thence...

or climb in visual conditions to cross departure end of runway northeastbound at or above 8,400 direct OKABE and 036° track to EXOWI, then via depicted route to COOL1, thence...

...climb in holding (if required) at COOL1 before proceeding via assigned route.

COOL1 ONE DEPARTURE (RNAV) (OBSTACLE)