

# RNAV (GPS) RWY 34

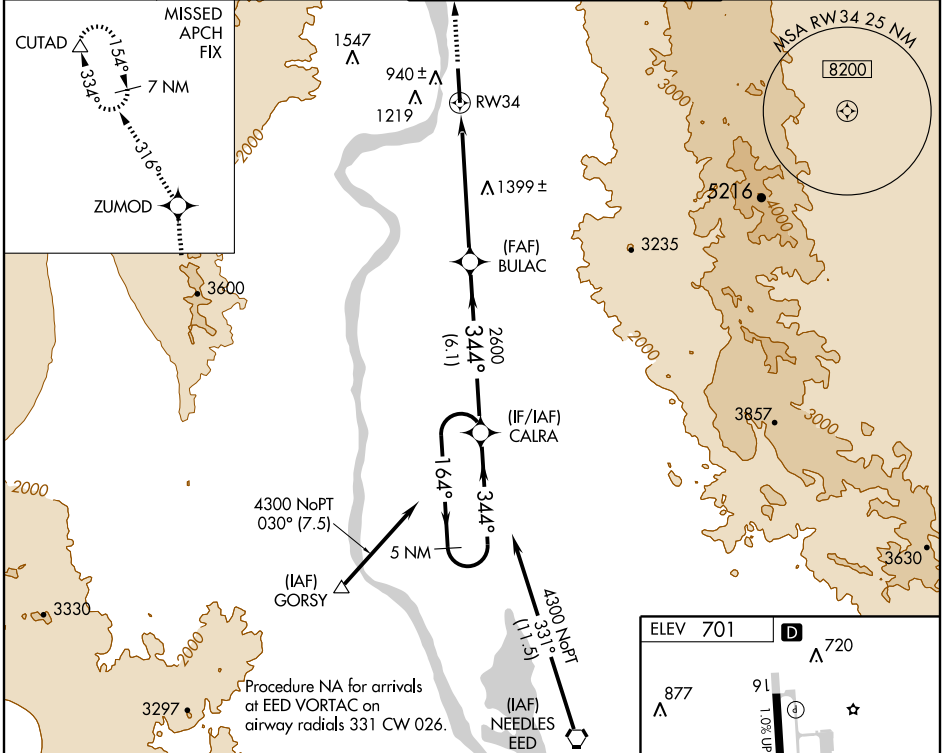
BULLHEAD CITY/LAUGHLIN/BULLHEAD INTL (IFP)

WAAS CH <b>82602</b> <b>W34A</b>	APP CRS <b>344°</b>	Rwy ldg TDZE Apt Elev	<b>7000</b> <b>699</b> <b>701</b>
--	------------------------	-----------------------------	---

**⚠** Circling to Rwy 16 NA at night.  
**⚠** DME/DME RNP-0.3 NA. Visibility reduction by helicopters NA.  
 When local altimeter setting not received, use Needles altimeter setting and increase LPV DA 94 feet and all MDA 100 feet.  
 VDP NA when using Needles altimeter setting.

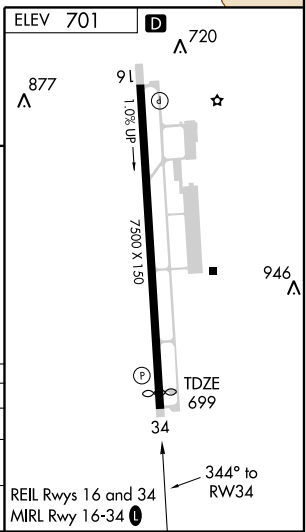
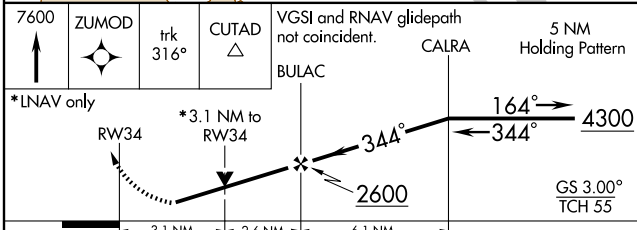
MISSED APPROACH: Climb to 7600 direct ZUMOD and via track 316° to CUTAD and hold, continue climb-in-hold to 7600.

AWOS-3 119.825	LOS ANGELES CENTER <b>134.65 360.65</b>	LAUGHLIN/BULLHEAD TOWER* <b>123.9 (CTAF) 1</b>	GND CON <b>118.25</b>
-------------------	--	---	--------------------------



SW-4, 22 OCT 2009 to 19 NOV 2009

SW-4, 22 OCT 2009 to 19 NOV 2009



CATEGORY	A	B	C	D
LPV DA	1344-2½		645 (700-2½)	
LNAV MDA	1740-1¼ 1041 (1100-1¼)	1740-1½ 1041 (1100-1½)	1740-3	1041 (1100-3)
CIRCLING	1740-1¼ 1039 (1100-1¼)	1740-1½ 1039 (1100-1½)	1740-3 1039 (1100-3)	1800-3 1099 (1100-3)

# RNAV (GPS) RWY 34