

RNAV (GPS) RWY 36

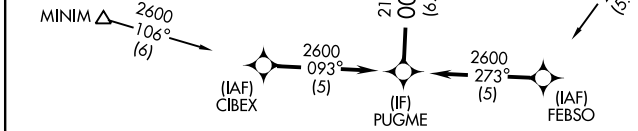
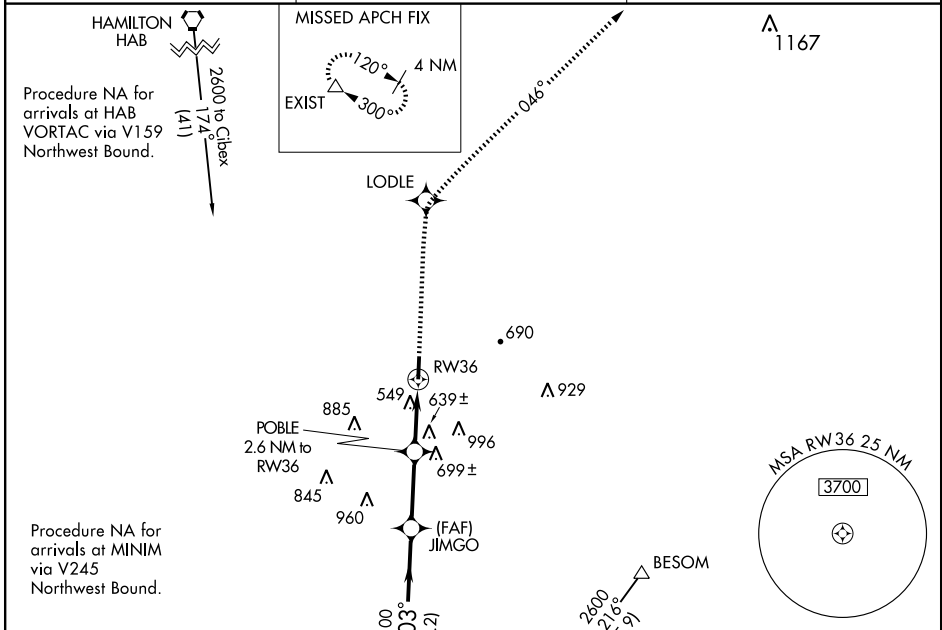
FAYETTE/ RICHARD ARTHUR FIELD (M95)

| | | |
|-------------|----------|-------------|
| APP CRS | Rwy Idg | 5008 |
| 003° | TDZE | 346 |
| | Apt Elev | 357 |

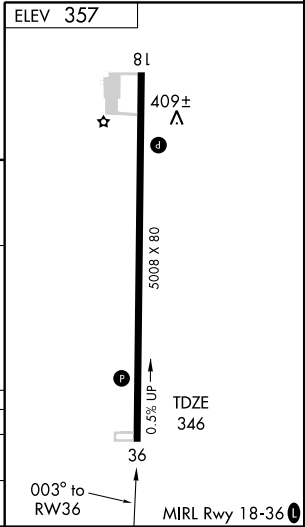
▼ Use Walker County-Bevill Field altimeter setting; when not received, use Tuscaloosa altimeter setting and increase all MDAs 20 feet and circling Cat. D visibility ¼ mile. Visibility reduction by helicopters NA.
▲ NA DME/DME RNP-0.3 NA.

MISSED APPROACH: Climb to 2600 direct LODLE and via 046° track to EXIST and hold.

| | | |
|--|---|---------------------------------|
| WALKER COUNTY-BEVILL FIELD AWOS-3 119.225 | COLUMBUS APP CON ★ 126.075 239.25 | UNICOM 122.8 (CTAF) 0 |
|--|---|---------------------------------|



| | | | | |
|----------|-----------------------|-----------------------|------------------------|-------------------------|
| CATEGORY | A | B | C | D |
| | 980-1 | 634 (700-1) | 980-1¾ 634 (700-1¾) | 980-2 634 (700-2) |
| LNVA MDA | 1000-1 643 (700-1) | 1040-1 683 (700-1) | 1040-2 683 (700-2) | 1080-2¼ 723 (800-2¼) |
| CIRCLING | | | | |



SE-4, 22 OCT 2009 to 19 NOV 2009

SE-4, 22 OCT 2009 to 19 NOV 2009