

FAYETTE, ALABAMA

AL-6966 (FAA)

RNAV (GPS) RWY 18

FAYETTE/ RICHARD ARTHUR FIELD (M95)

APP CRS	Rwy Idg	5008
183°	TDZE	357
	Apt Elev	357

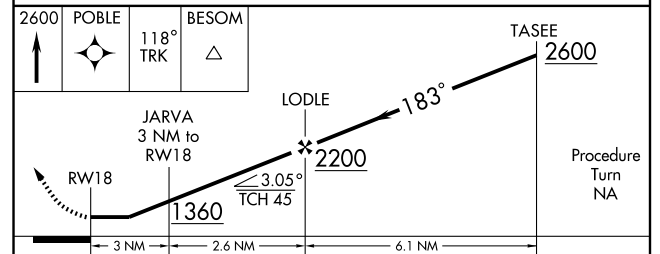
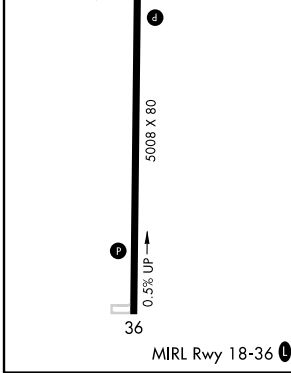
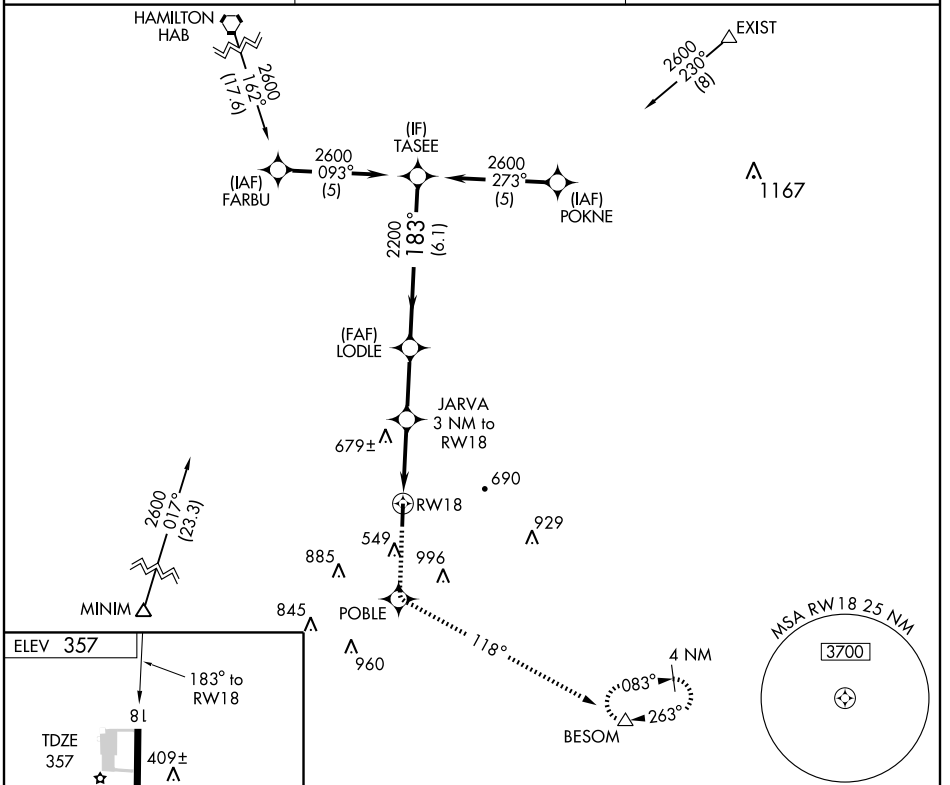
▼ Use Walker County-Bevill Field altimeter setting; when not received, use Tuscaloosa altimeter setting and increase all MDAs 20 feet and LNAV visibility Cats C/D ¼ mile and circling Cat. D ½ mile.
▲ NA Visibility reduction by helicopters NA. DME/DME RNP-0.3 NA.

MISSED APPROACH: Climb to 2600 direct POBLE and via 118° track to BESOM and hold.

WALKER COUNTY-BEVILL FIELD
AWOS-3
119.225

COLUMBUS APP CON ★
126.075 239.25

UNICOM
122.8 (CTAF) 0



CATEGORY	A	B	C	D
LNAV MDA	1020-1	663 (700-1)	1020-1¾ 663 (700-1¾)	1020-2 663 (700-2)
CIRCLING	1020-1 663 (700-1)	1040-1 683 (700-1)	1040-2 683 (700-2)	1080-2½ 723 (800-2½)

FAYETTE, ALABAMA
Orig 09239

33° 43'N - 87° 49'W

RNAV (GPS) RWY 18

SE-4, 22 OCT 2009 to 19 NOV 2009

SE-4, 22 OCT 2009 to 19 NOV 2009