

NEW SMYRNA BEACH, FLORIDA

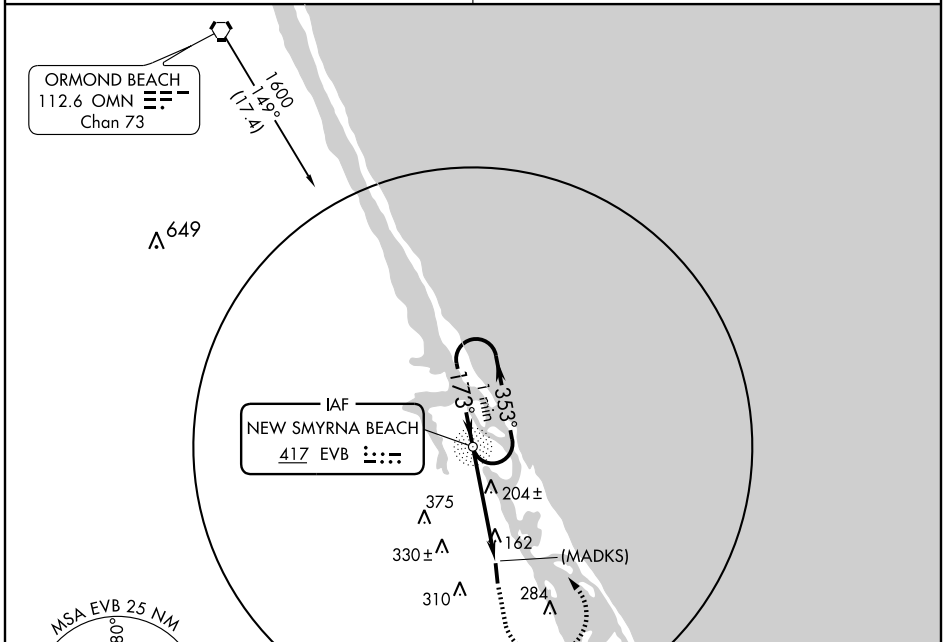
AL-6965 (FAA)

# NDB or GPS RWY 18

NEW SMYRNA BEACH/ MASSEY RANCH AIRPARK (X50)

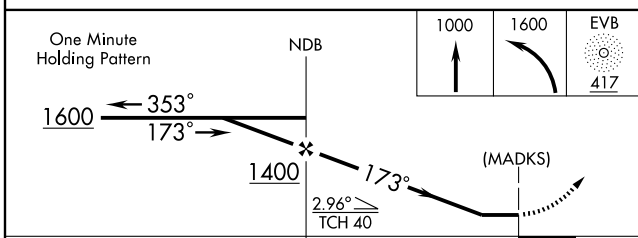
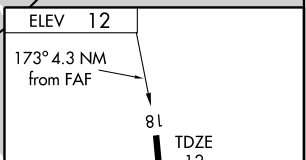
NDB EVB	APP CRS	Rwy Idg	<b>3852</b>
<b>417</b>	<b>173°</b>	TDZE	<b>12</b>
		Apt Elev	<b>12</b>

<p><b>▲ NA</b> Use Daytona Beach, FL, altimeter setting.</p>	<p>MISSED APPROACH: Climb to 1000 then climbing left turn to 1600 direct EVB NDB and hold.</p>
<p>DAYTONA APP CON <b>125.35 322.3</b></p>	<p>UNICOM <b>122.7 (CTAF)</b></p>



SE-3, 22 OCT 2009 to 19 NOV 2009

SE-3, 22 OCT 2009 to 19 NOV 2009



CATEGORY	A	B	C	D
S-18	600-1	588 (600-1)	600-1½ 588 (600-1½)	NA
CIRCLING	600-1 588 (600-1)	660-1 648 (700-1)	660-1¾ 648 (700-1¾)	NA

ELEV	12
173° 4.3 NM from FAF	
81	TDZE 12
3852 X 60	
36	
LIRL Rwy 18-36	
FAF to MAP	4.3 NM
Knots	60 90 120 150 180
Min:Seq	4:18 2:52 2:09 1:43 1:26

NEW SMYRNA BEACH, FLORIDA  
Amdt 1 03135

NEW SMYRNA BEACH/ MASSEY RANCH AIRPARK (X50)  
28°59'N-80°56'W

# NDB or GPS RWY 18