

ILS RWY 1

NORTH WILKESBORO/ WILKES COUNTY (UKF)

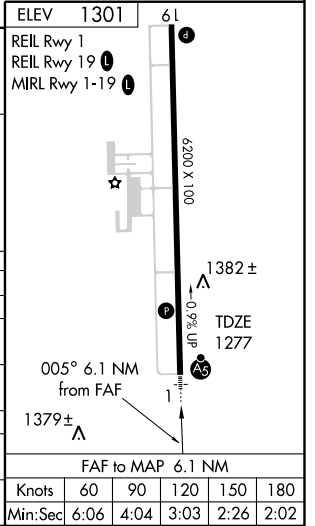
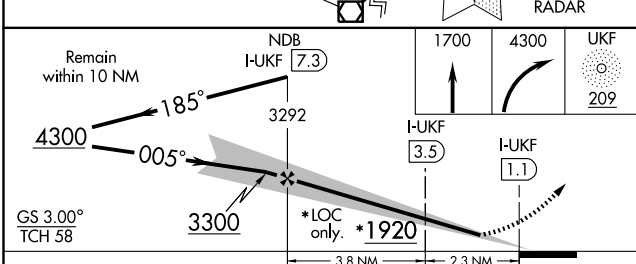
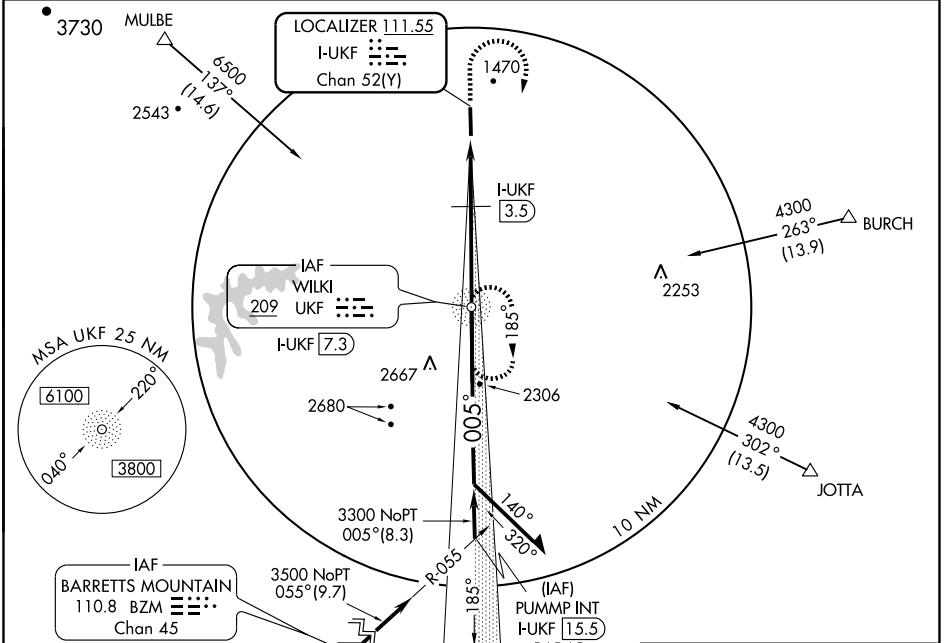
LOC/DME I-UKF 111.55 Chan 52 (Y)	APP CRS 005°	Rwy Idg 6200 TDZE 1277 Apt Elev 1301
--	------------------------	---

NA DME MINIMUMS: For inoperative MALSR, increase S-LOC 1 Cat D visibility to 1 mile. ADF REQUIRED

MALSR
AS

MISSED APPROACH: Climb to 1700 then climbing right turn to 4300 direct WILKI NDB and hold.

AWOS-3 126.625	ATLANTA CENTER 125.15 263.0	UNICOM 122.7 (CTAF)
--------------------------	---------------------------------------	-------------------------------



CATEGORY	A	B	C	D
S-ILS 1	1477-1/2 200 (200-1/2)			
S-LOC 1	1920-1/2 643 (700-1/2)		1920-1 643 (700-1 1/4)	1920-1 1/2 643 (700-1 1/2)
CIRCLING	1920-1 619 (700-1)		1920-1 3/4 619 (700-1 3/4)	1920-2 619 (700-2)
DME MINIMUMS				
S-LOC 1	1580-1/2 303 (300-1/2)		1580-3/4 303 (300-3/4)	
CIRCLING	1820-1 519 (600-1)	1880-1 579 (600-1)	1880-1 1/2 579 (600-1 1/2)	1880-2 579 (600-2)

ILS RWY 1

SE-2, 22 OCT 2009 to 19 NOV 2009

SE-2, 22 OCT 2009 to 19 NOV 2009