

CALDWELL, OHIO

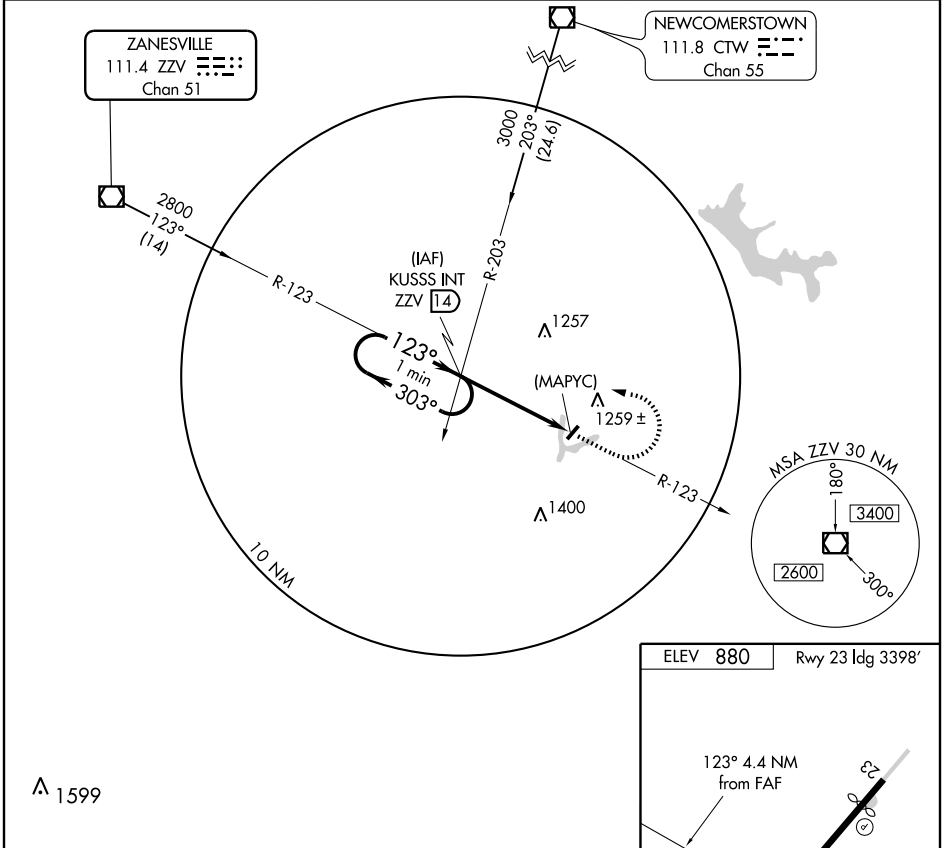
AL-6959 (FAA)

VOR/DME ZZY 111.4 Chan 51	APP CRS 123°	Rwy Idg TDZE Apt Elev	N/A N/A 880
---	------------------------	-----------------------------	--

VOR or GPS-A
CALDWELL/ NOBLE COUNTY (I10)

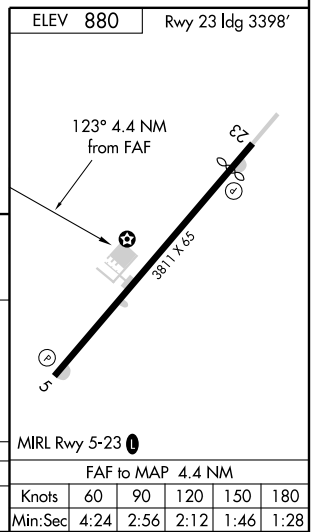
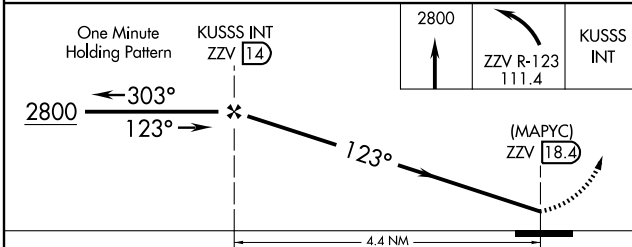
<p>▼ ▲ NA</p> <p>Use Zanesville altimeter setting.</p>	<p>MISSED APPROACH: Climb to 2800 then left turn via ZZY R-123 to KUSSS Int/ZZY 14 DME and hold.</p>
--	--

<p>INDIANAPOLIS CENTER 124.45 370.9</p>	<p>UNICOM 122.8 (CTAF)</p>	<p>122.7 0</p>
--	---------------------------------------	-----------------------



EC-2, 22 OCT 2009 to 19 NOV 2009

EC-2, 22 OCT 2009 to 19 NOV 2009



CATEGORY	A	B	C	D	FAF to MAP 4.4 NM					
CIRCLING	1620-1	740 (800-1)	1640-2 ¼ 760 (800-2 ¼)	NA	Knots	60	90	120	150	180
					Min:Sec	4:24	2:56	2:12	1:46	1:28

CALDWELL, OHIO
Amdt 1 04106

39°48'N-81°32'W

CALDWELL/ NOBLE COUNTY (I10)
VOR or GPS-A