

WASHINGTON, KANSAS

AL-6958 (FAA)

NDB or GPS-A

WASHINGTON COUNTY MEMORIAL (K38)

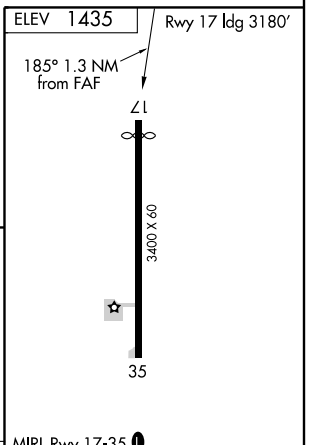
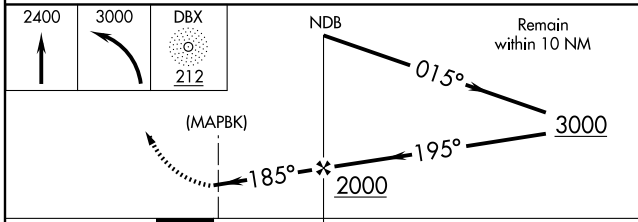
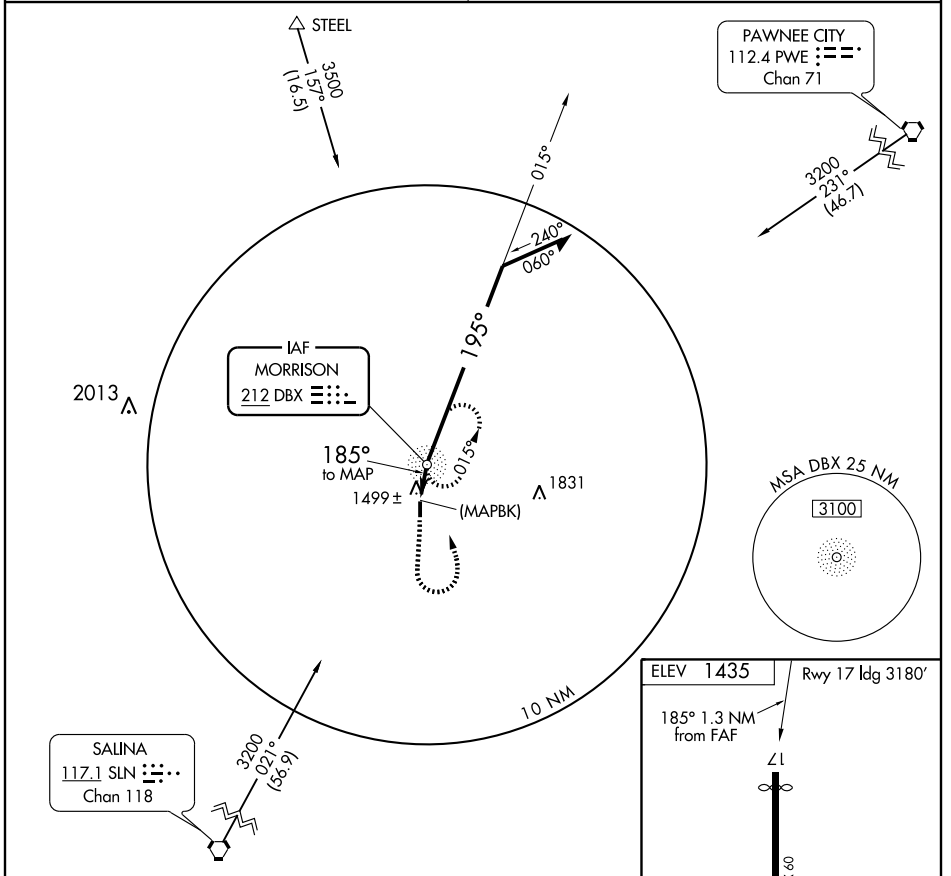
NDB DBX 212	APP CRS 185°	Rwy ldg TDZE Apt Elev 1435	N/A N/A 1435
-----------------------	------------------------	--	---------------------------

NA Use Concordia Blosser Muni altimeter setting; if not received, procedure not authorized.

MISSED APPROACH: Climb to 2400 then climbing left turn to 3000 direct DBX NDB and hold.

KANSAS CITY CENTER
127.35 257.975

(CTAF) **122.9 0**



CATEGORY	A	B	C	D	FAF to MAP 1.3 NM					
CIRCLING	1940-1	505 (600-1)	1940-1½ 505 (600-1½)	NA	Knots	60	90	120	150	180
					Min:Sec	1:18	0:52	0:39	0:31	0:26

WASHINGTON, KANSAS
Orig-A 04330

39°44'N-97°03'W

WASHINGTON COUNTY MEMORIAL (K38)

NDB or GPS-A

NC-2, 22 OCT 2009 to 19 NOV 2009

NC-2, 22 OCT 2009 to 19 NOV 2009