

EATON RAPIDS, MICHIGAN

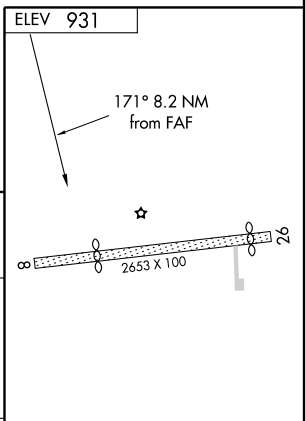
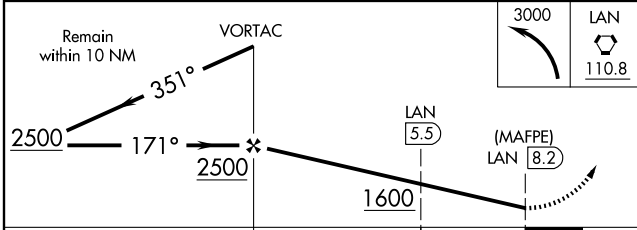
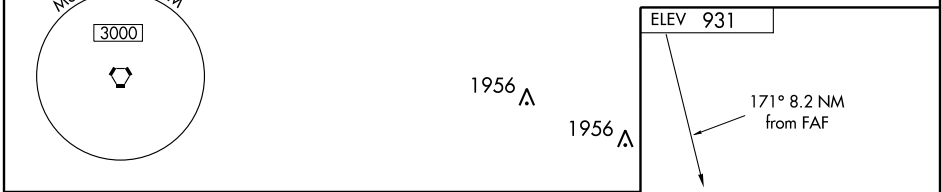
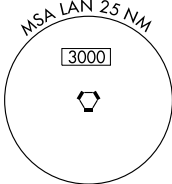
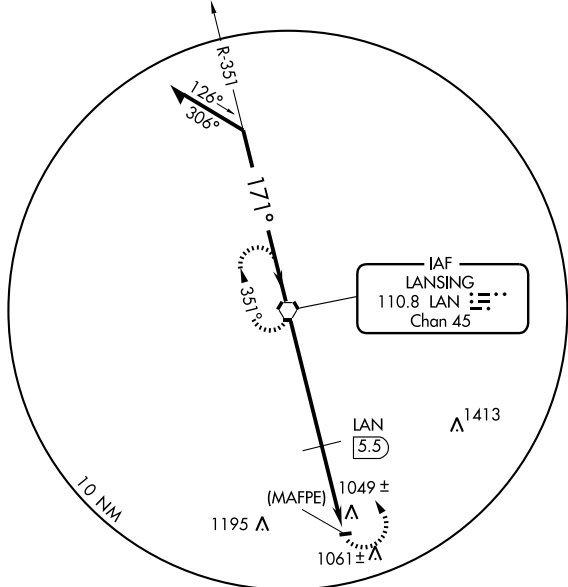
AL-6952 (FAA)

VORTAC LAN 110.8 Chan 45	APP CRS 171°	Rwy Idg TDZE Apt Elev 931	N/A N/A 931
---------------------------------------	------------------------	---	--------------------------

VOR or GPS-A
EATON RAPIDS / SKYWAY ESTATES (60G)

▼ ▲ NA	Use Lansing altimeter setting.	MISSED APPROACH: Climbing left turn to 3000 direct LAN VORTAC and hold.
-----------	--------------------------------	---

LANSING APP CON 118.65 226.4	CTAF 122.9 0
--	------------------------



CATEGORY	A	B	C	D	MIRL Rwy 8-26 0
CIRCLING	1600-1	669 (700-1)		NA	
DME MINIMUMS					FAF to MAP 8.2 NM
CIRCLING	1400-1	469 (500-1)		NA	Knots Min:Sec
					60 90 120 150 180 8:12 5:28 4:06 3:17 2:44

EATON RAPIDS, MICHIGAN
Amdt 1 09295

42°35'N - 84°39'W

EATON RAPIDS / SKYWAY ESTATES (60G)
VOR or GPS-A

EC-1, 22 OCT 2009 to 19 NOV 2009

EC-1, 22 OCT 2009 to 19 NOV 2009