

LOVINGTON, NEW MEXICO

AL-6951 (FAA)

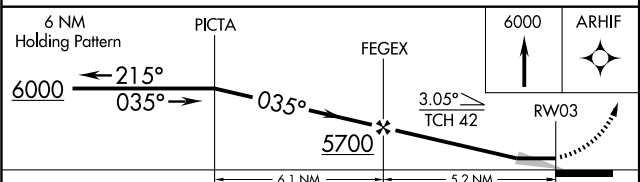
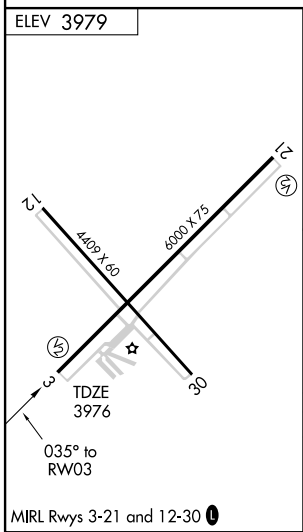
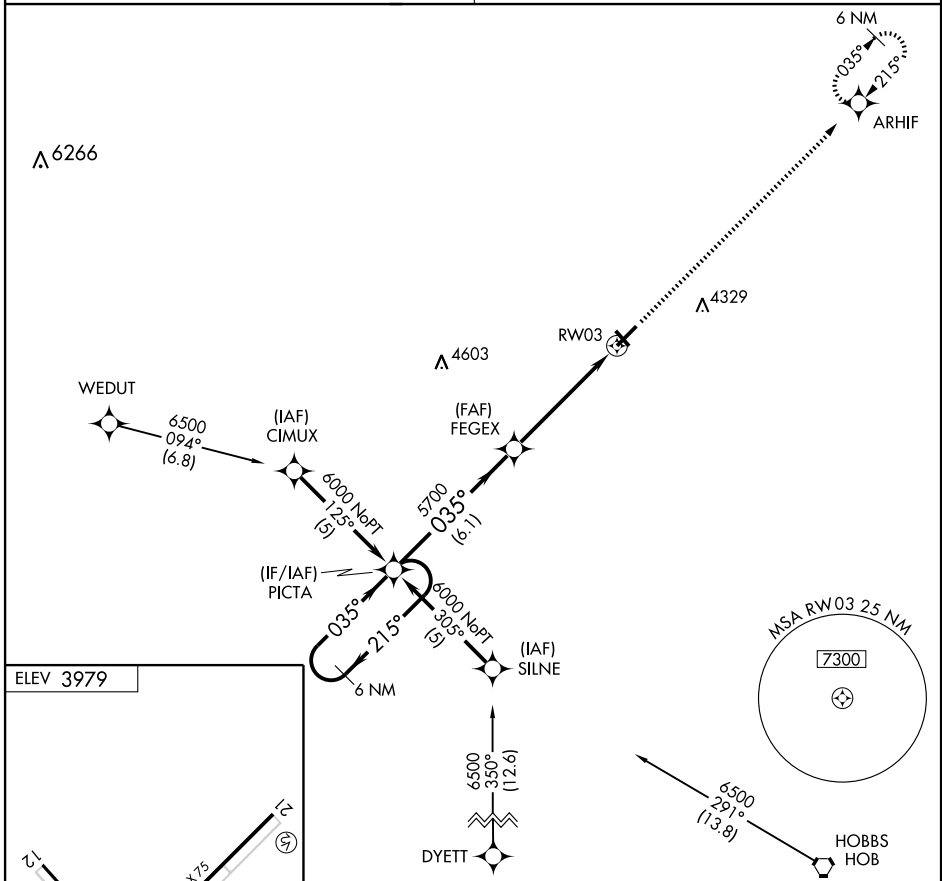
RNAV (GPS) RWY 3

LOVINGTON/ LEA COUNTY-ZIP FRANKLIN MEMORIAL (E06)

APP CRS	Rwy Idg	6000
035°	TDZE	3976
	Apf Elev	3979

<p>NA DME/DME RNP- 0.3 NA. Use Hobbs altimeter setting, when not received, procedure NA.</p>	<p>MISSED APPROACH: Climb to 6000 direct ARHIF and hold.</p>
---	--

<p>FORT WORTH CENTER 133.1 298.95</p>	<p>UNICOM 122.8 (CTAF) 0</p>
--	---



CATEGORY	A	B	C	D
LNAV MDA	4560-1	584 (600-1)	4560-1½ 584 (600-1½)	NA
CIRCLING	4600-1	621 (700-1)	4600-1¾ 621 (700-1¾)	NA

LOVINGTON, NEW MEXICO
Orig 07018

LOVINGTON/ LEA COUNTY-ZIP FRANKLIN MEMORIAL (E06)
32°57'N- 103°25'W

RNAV (GPS) RWY 3

SW-1, 22 OCT 2009 to 19 NOV 2009

SW-1, 22 OCT 2009 to 19 NOV 2009