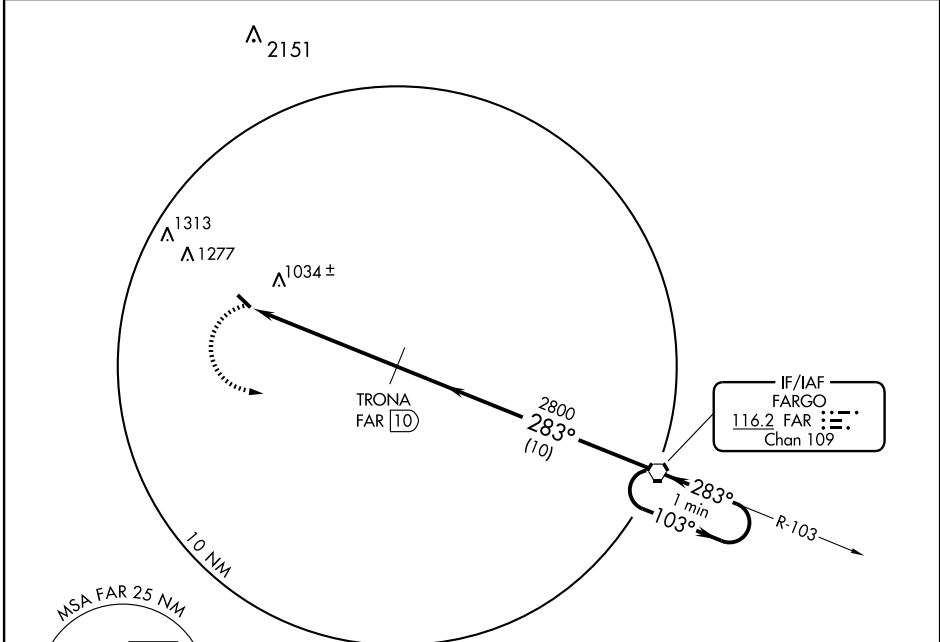


VORTAC FAR <b>116.2</b> Chan <b>109</b>	APP CRS <b>283°</b>	Rwy Idg <b>3900</b> TDZE <b>929</b> Apt Elev <b>933</b>
---	------------------------	---

**VOR/DME RWY 31**  
CASSELTON ROBERT MILLER RGNL (5N8)

**▼** Use Fargo altimeter setting; if not received, use Morehead altimeter setting.  
**▲ NA** MISSED APPROACH: Climbing left turn to 2800 direct FAR VORTAC and hold.

FARGO ASOS <b>124.5</b>	FARGO APP CON * <b>120.4 377.15</b>	UNICOM <b>122.8 (CTAF) 0</b>
----------------------------	--	---------------------------------

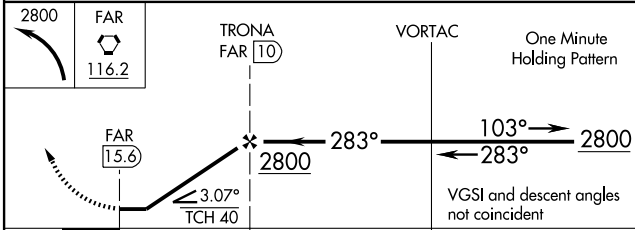
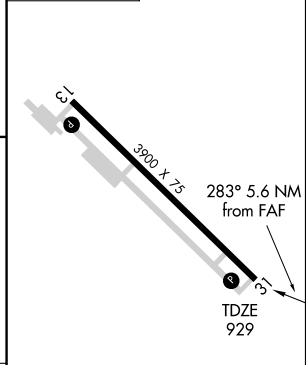


NC-1, 22 OCT 2009 to 19 NOV 2009

NC-1, 22 OCT 2009 to 19 NOV 2009



ELEV 933



CATEGORY	A	B	C	D
S-31	1360-1	431 (500-1)	1360-1½ 431 (500-1½)	NA
CIRCLING	1400-1	467 (500-1)	1400-1½ 467 (500-1½)	NA

REIL Rwy 31 0  
MIRL Rwy 13-31 0