

WAAS CH <b>53607</b> <b>W31A</b>	APP CRS <b>308°</b>	Rwy Idg <b>3900</b> TDZE <b>933</b> Apt Elev <b>933</b>
--	------------------------	---

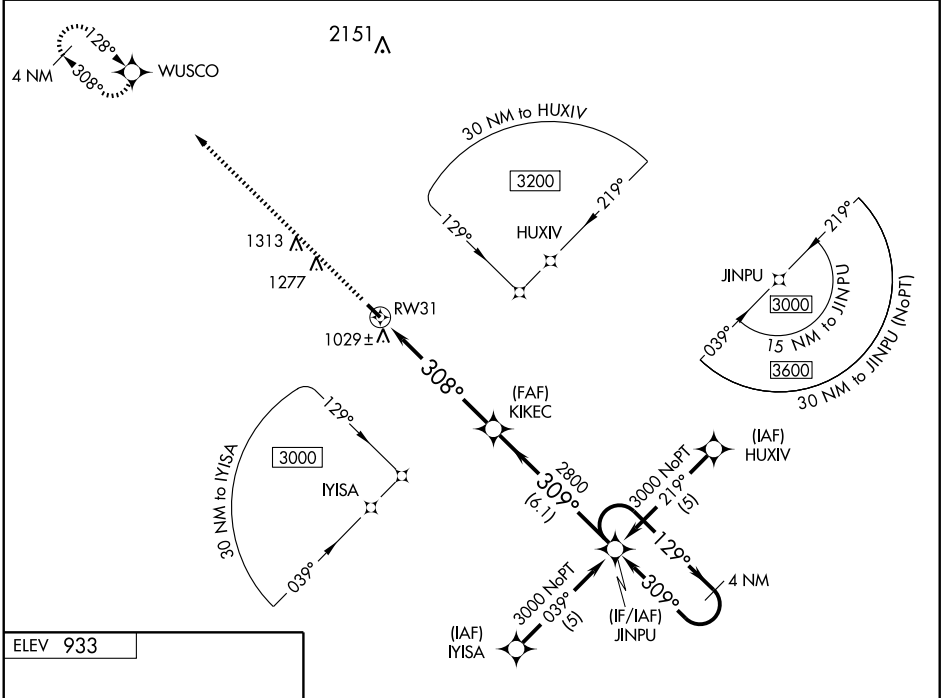
**RNAV (GPS) RWY 31**  
CASSELTON ROBERT MILLER RGNL (5N8)

**NA** Use Fargo altimeter setting; when not received, use Morehead altimeter setting and increase all DA 11 feet and all MDA 20 feet, increase LNAV Cat C visibility ¼ mile. Baro-VNAV NA. Visibility reduction by helicopters NA. DME/DME RNP-0.3 NA.

**MISSED APPROACH:** Climb to 3000 direct WUSCO and hold.

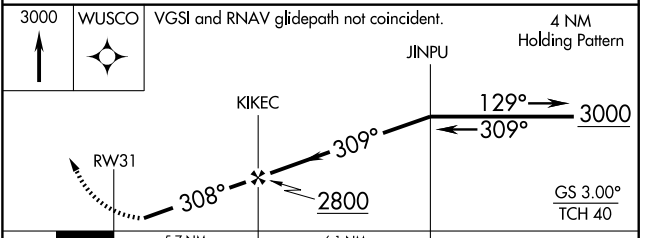
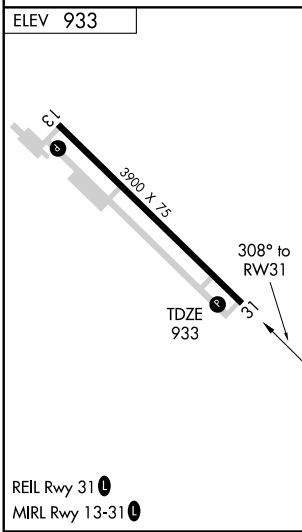
FARGO APP CON \*  
**120.4 377.15**

UNICOM  
**122.8 (CTAF) 0**



NC-1, 22 OCT 2009 to 19 NOV 2009

NC-1, 22 OCT 2009 to 19 NOV 2009



CATEGORY	A	B	C	D
LPV DA	1226-1 293 (300-1)			NA
LNAV/VNAV DA	1370-1½ 437 (500-1½)			NA
LNAV MDA	1420-1	487 (500-1)	1420-1¼ 487 (500-1¼)	NA
CIRCLING	1420-1	487 (500-1)	1420-1½ 487 (500-1½)	NA