

CANTON, GEORGIA

AL-6949 (FAA)

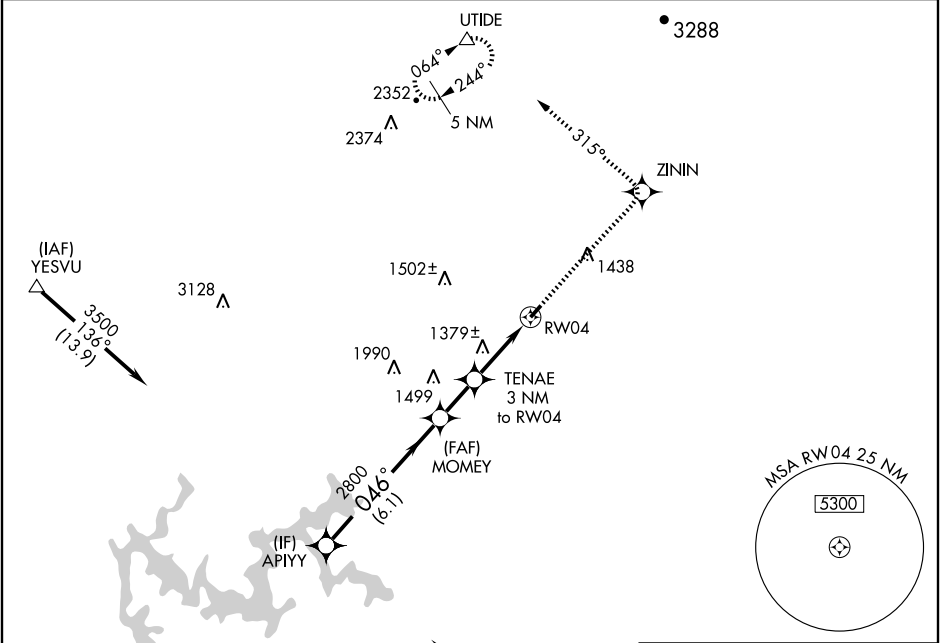
RNAV (GPS) RWY 4
CANTON/ CHEROKEE COUNTY (47A)

WAAS CH 56605 W04A	APP CRS 046°	Rwy Idg 3414 TDZE 1219 Apt Elev 1219
--	------------------------	---

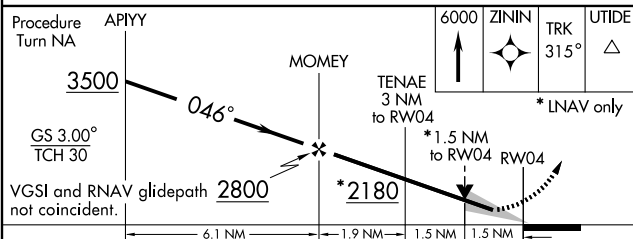
NA DME/DME RNP-0.3 NA. VDP NA when using Marietta altimeter setting. When local altimeter setting not received, use Marietta altimeter setting and increase all DAs/MDAs 80 feet, LPV all Cats visibility ¼ mile and LNAV Cat C ¼ mile.

MISSED APPROACH: Climb to 6000 direct ZININ and via 315° track to UTIDE and hold, continue climb-in-hold to 6000.

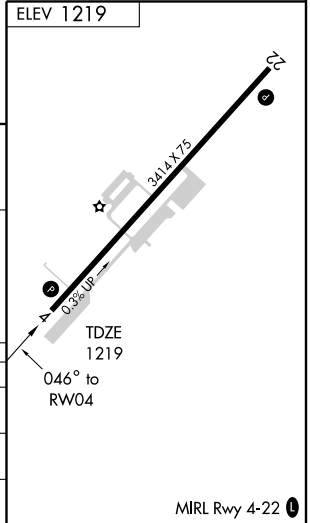
AWOS-3 119.825	ATLANTA APP CON 121.0 268.7	UNICOM 123.0 (CTAF) 0
--------------------------	---------------------------------------	--



Procedure NA for arrivals at ZAXEL via V97 Southbound.



CATEGORY	A	B	C	D
LPV DA	1469-1 250 (300-1)			NA
LNAV MDA	1640-1	421 (500-1)	1640-1¼ 421 (500-1¼)	NA
CIRCLING	1720-1	501 (600-1)	1720-1½ 501 (600-1½)	NA



SE-4, 22 OCT 2009 to 19 NOV 2009

SE-4, 22 OCT 2009 to 19 NOV 2009

CANTON, GEORGIA
Orig 09015

34° 19'N-84° 25'W

CANTON/ CHEROKEE COUNTY (47A)
RNAV (GPS) RWY 4

MIRL Rwy 4-22 **0**