

CANTON, GEORGIA

AL-6949 (FAA)

# RNAV (GPS) RWY 22

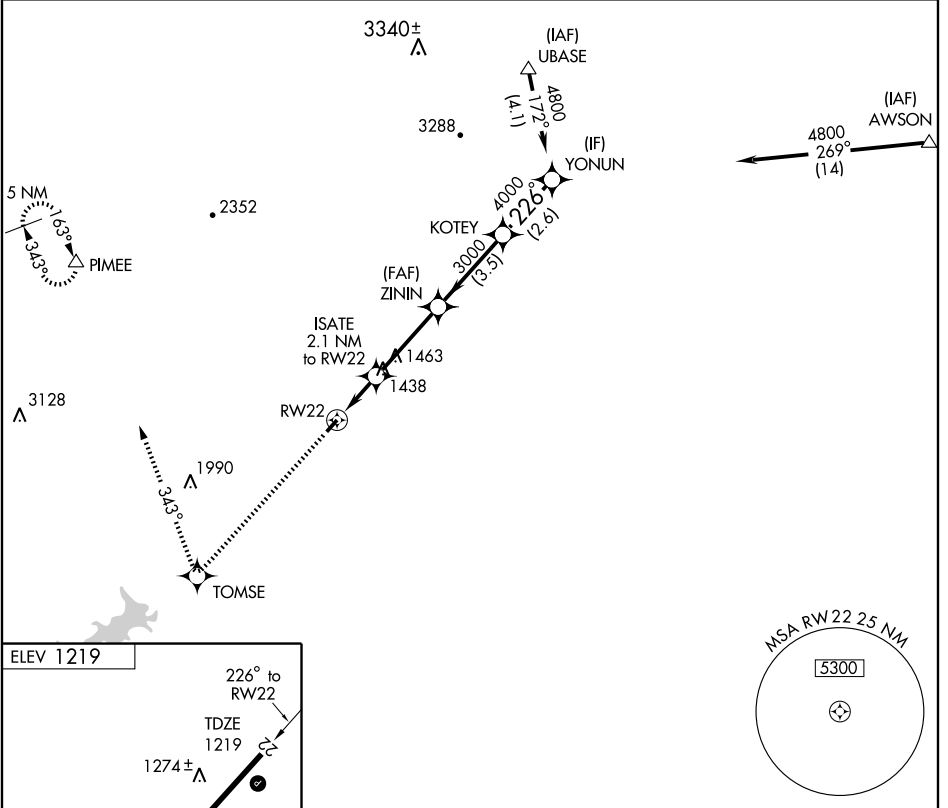
CANTON/CHEROKEE COUNTY (47A)

APP CRS	Rwy Idg	<b>3414</b>
<b>226°</b>	TDZE	<b>1219</b>
	Apt Elev	<b>1219</b>

**NA** DME/DME RNP-0.3 NA. Visibility reduction by helicopters NA. When local altimeter setting not received, use Marietta altimeter setting and increase all MDAs 80 feet and LNAV Cat. C visibility ¼ mile.

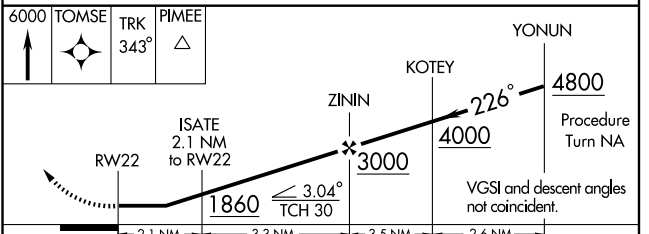
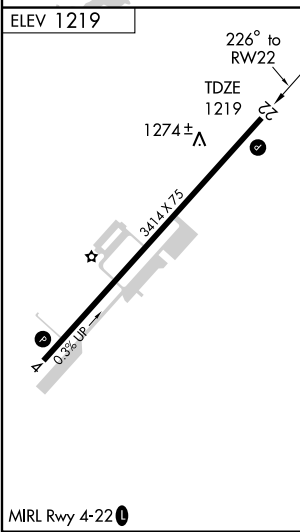
**MISSED APPROACH:** Climb to 6000 direct TOMSE then via 343° track to PIMEE and hold, continue climb-in-hold to 6000.

AWOS-3 <b>119.825</b>	ATLANTA APP CON <b>121.0 268.7</b>	UNICOM <b>123.0 (CTAF) 0</b>
--------------------------	---------------------------------------	---------------------------------



SE-4, 22 OCT 2009 to 19 NOV 2009

SE-4, 22 OCT 2009 to 19 NOV 2009



CATEGORY	A	B	C	D
LNAV MDA	1540-1 321 (400-1)			NA
CIRCLING	1720-1	501 (600-1)	1720-1½ 501 (600-1½)	NA

CANTON, GEORGIA  
Orig 07354

34° 19'N-84° 25'W

# RNAV (GPS) RWY 22