

BOONEVILLE/BALDWIN, MISSISSIPPI

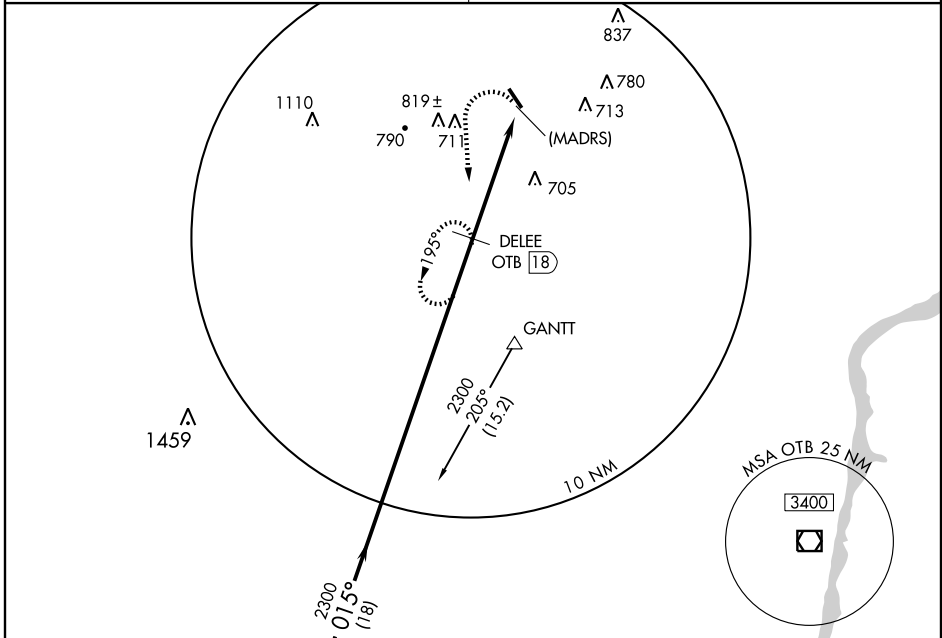
AL-6948 (FAA)

VOR/DME OTB 109.8 Chan 35	APP CRS 015°	Rwy Idg TDZE Apt Elev	N/A N/A 384
---	------------------------	-----------------------------	--

VOR/DME or GPS-A

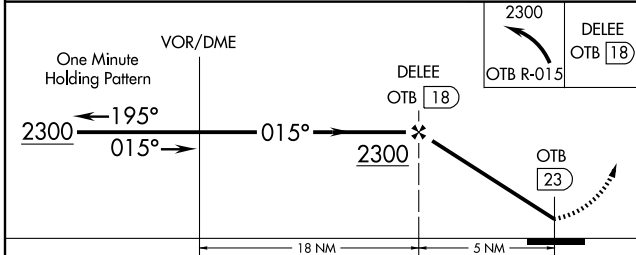
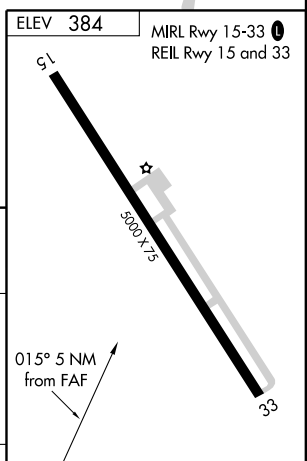
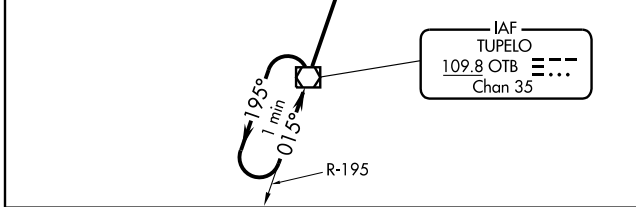
BOONEVILLE/BALDWIN (8M1)

<p>▲ NA Use Tupelo altimeter setting.</p>	<p>MISSED APPROACH: Climbing left turn to 2300 via OTB R-015 to DELEE/OTB 18 DME and hold.</p>
<p>MEMPHIS CENTER 135.9 273.55</p>	<p>UNICOM 122.8 (CTAF) 0</p>



SC-4, 22 OCT 2009 to 19 NOV 2009

SC-4, 22 OCT 2009 to 19 NOV 2009



CATEGORY	A	B	C	D	Knots	60	90	120	150	180
CIRCLING	1040-1 656 (700-1)	1040-1¼ 656 (700-1¼)	1040-1¾ 656 (700-1¾)	NA	Min:Sec					

BOONEVILLE/BALDWIN, MISSISSIPPI
Orig 08045

34°36'N - 88°39'W

VOR/DME or GPS-A

BOONEVILLE/BALDWIN (8M1)