

WAAS CH <b>53614</b> <b>W30A</b>	APP CRS <b>300°</b>	Rwy ldg <b>4105</b> TDZE <b>1146</b> Apt Elev <b>1146</b>
--	------------------------	---

# RNAV (GPS) RWY 30

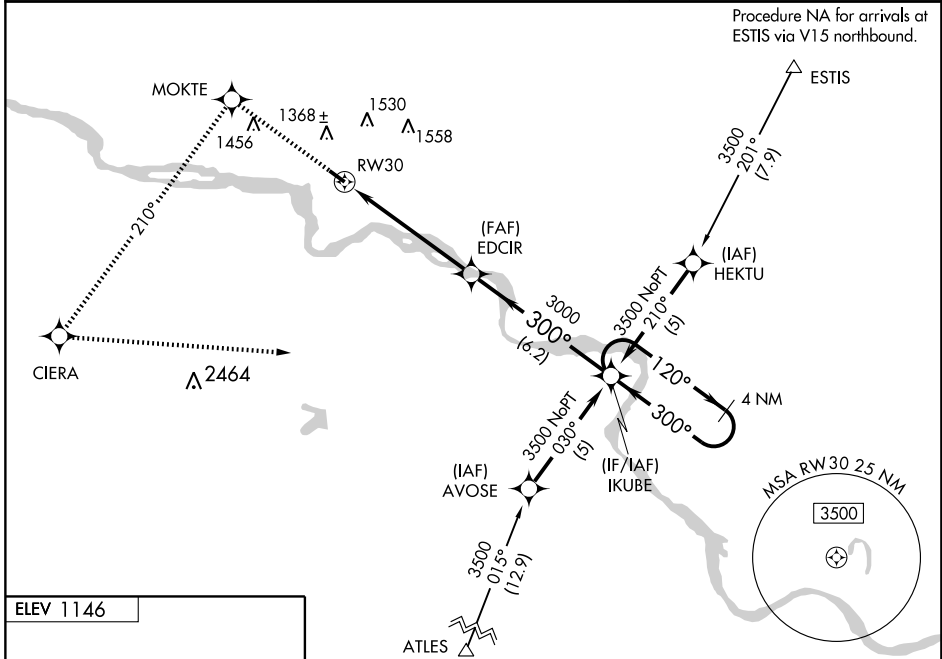
VERMILLION/HAROLD DAVIDSON FIELD (VMR)

Baro-VNAV NA when using Yankton altimeter setting. For uncompensated Baro-VNAV systems, LNAV/VNAV NA below -17°C (2°F) or above 54°C (130°F). DME/DME RNP -0.3 NA.

Visibility reduction by helicopters NA. When local altimeter setting not received, use Yankton altimeter setting and increase all DA 73 feet and LPV and LNAV/VNAV visibility ¼ mile all Cats, increase all MDA 80 feet and LNAV Cat C visibility ¼ mile and Circling Cat C visibility ½ mile.

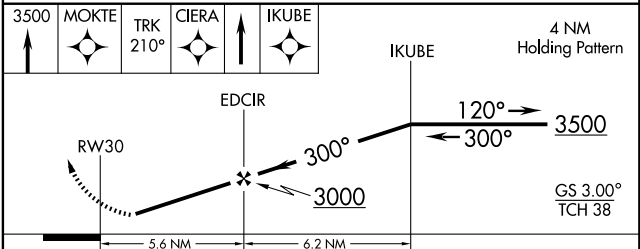
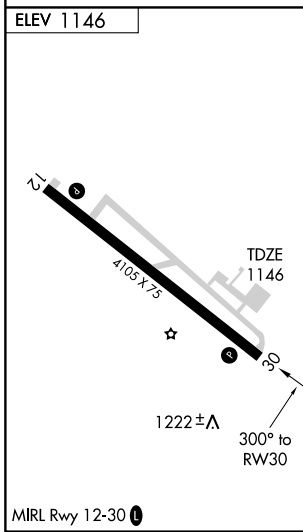
MISSED APPROACH: Climb to 3500 direct MOKTE and via track 210° to CIERA and direct IKUBE and hold.

AWOS-3 <b>122.8</b>	SIoux CITY APP CON * <b>124.6 307.0</b>	UNICOM <b>122.8 (CTAF)</b>
------------------------	--	-------------------------------



NC-1, 22 OCT 2009 to 19 NOV 2009

NC-1, 22 OCT 2009 to 19 NOV 2009



CATEGORY	A	B	C	D
LPV DA	1434-1 288 (300-1)			NA
LNAV/VNAV DA	1559-1 ½ 413 (500-1 ½)			NA
LNAV MDA	1680-1	534 (600-1)	1680-1 ½ 534 (600-1 ½)	NA
CIRCLING	1740-1	594 (600-1)	1740-1 ½ 594 (600-1 ½)	NA