

RNAV (GPS) Z RWY 17

TOOELE / BOLINDER FIELD-TOOELE VALLEY (TVY)

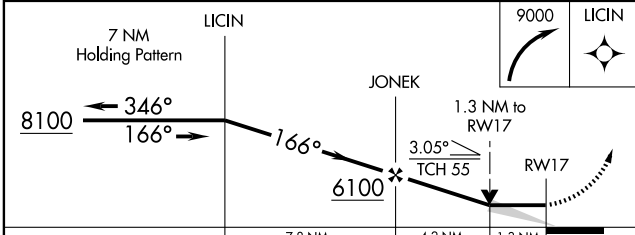
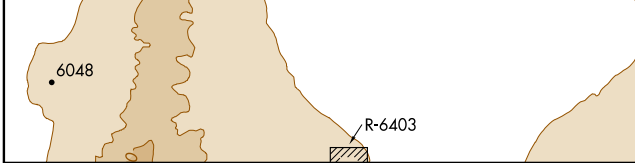
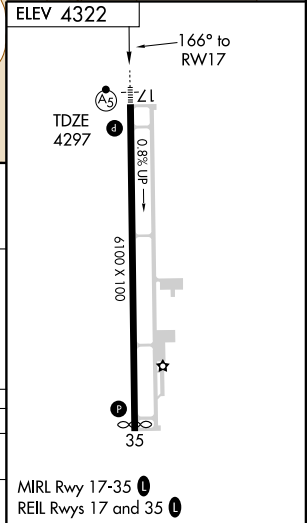
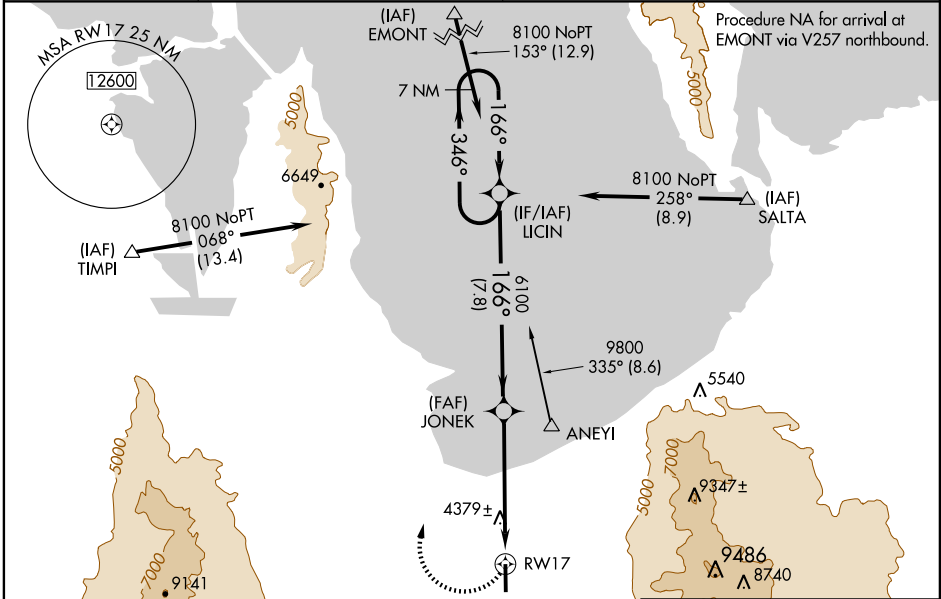
APP CRS 166°	Rwy Idg 6100
	TDZE 4297
	Apt Elev 4322

⚠ Circling to Rwy 35 NA at night. DME/DME RNP-0.3 NA.
⚠ When local altimeter setting not received, use Salt Lake City Intl altimeter setting and increase all MDA 60 feet and LNAV Cat. C/D and Circling Cat. D visibility ¼ mile.
 For inoperative MALSRS, increase LNAV Cats. A and B visibility ¼ mile. For inoperative MALSRS, when using Salt Lake City Intl altimeter setting, increase LNAV Cats. A and B visibility ¼ mile. VDP NA when using Salt Lake City Intl altimeter setting.

MALSRS

MISSED APPROACH:
 Climbing right turn to 9000 direct LICIN and hold, continue climb-in-hold to 9000.

AWOS-3 119.725	SALT LAKE CITY APP CON 135.5 316.15	CLNC DEL 124.4	UNICOM 123.0 (CTAF)
--------------------------	-----------------------------------------------	--------------------------	-------------------------------



CATEGORY	A	B	C	D
LNAV MDA	4740-¾ 443 (500-¾)			4740-1 443 (500-1)
CIRCLING	4820-1 498 (500-1)	4840-1 518 (600-1)	4860-1½ 538 (600-1½)	4940-2 618 (700-2)

MIRL Rwy 17-35 **⓪**
 REIL Rwy 17 and 35 **⓪**

SW-4, 22 OCT 2009 to 19 NOV 2009

SW-4, 22 OCT 2009 to 19 NOV 2009